

Anti-XBP1 Rabbit pAb



WL00708

For Research Use Only. Not For Use In Diagnostic Procedures

Product Information

Product name	Anti-XBP1 Rabbit pAb
Source	Rabbit
Species reactivity	Human, Mouse, Rat
Tested applications	Western blot 1:1000-1:2000 Immunohistochemistry 1:50-1:100 <i>*Suggested working dilutions are given as a guide only. It is recommended that the user titrates the product for use in their own experiment using appropriate negative and positive controls.</i>
Molecular Wt.	XBP-1U : 29 kDa XBP-1S : 56 kDa
Cellular localization	Nucleus.
Pack size	50/100/200/500/1000μl
Storage	Store at -20°C. Avoid freeze/thaw cycles.
Storage buffer	Supplied in 20 mM phosphate (pH 7.5), 150 mM NaCl, 100 μg/ml BSA, 50% glycerol and less than 0.02% sodium azide

General Information

Background	The X-box binding protein-1 (XBP-1), also designated tax-responsive element-binding protein 5 (TREB5) in mouse and human, or hepatocarcinogenesis-related transcription factor (HTF) in rat, belongs to the basic region/leucine zipper (bZIP) family of transcription factors. XBP-1 was first characterized as a protein that binds to the HLA-DRα promoter in B cells. It is expressed at high levels in developing bone and its levels are modulated during osteoblast development, suggesting a role in regulation of expression of osteoblast-specific genes.
Immunogen	Polyclonal antibody is produced by immunizing animals with a synthetic peptide of XBP1.
Purification	Polyclonal antibody was purified by Protein A affinity chromatography.

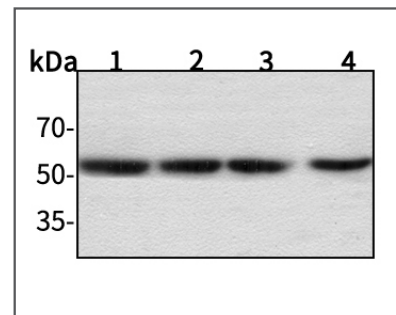
Anti-XBP1 Rabbit pAb



WL00708

For Research Use Only. Not For Use In Diagnostic Procedures

Product Images



Western blot-Anti-XBP1 pAb

Lane 1: Human HepG2 cell lysate 30μg
Lane 2: Human Hela cell lysate 30μg
Lane 3: Human BGC-823 cell lysate 30μg
Lane 4: Human MGC-803 cell lysate 30μg

Separation gel: 11% polyacrylamide

Electrophoresis: 100V, 4°C, 3h

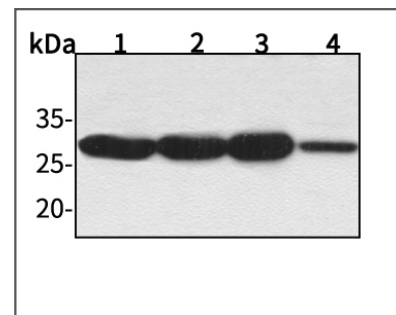
Transmembrane: 100V, 4°C, 1h

Blocking: 5% w/v nonfat dry milk, 1×TBST, at RT with gentle shaking

Primary antibody: 1:1000 in blocking buffer, 4°C, overnight

Secondary antibody-HRP: 1:5000-1:10000 in blocking buffer, RT, 45min

Detection: ECL, 30s-2min



Western blot-Anti-XBP1 pAb

Lane 1: Mouse kidney tissue lysate 30μg
Lane 2: Mouse heart tissue lysate 30μg
Lane 3: Rat liver tissue lysate 30μg
Lane 4: Rat brain tissue lysate 30μg

Separation gel: 11% polyacrylamide

Electrophoresis: 100V, 4°C, 3h

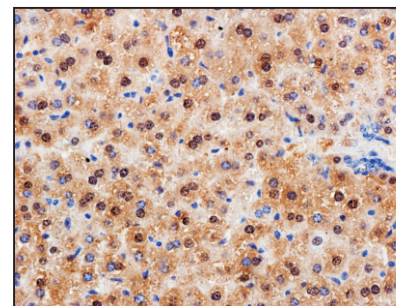
Transmembrane: 100V, 4°C, 1h

Blocking: 5% w/v nonfat dry milk, 1×TBST, at RT with gentle shaking

Primary antibody: 1:1000 in blocking buffer, 4°C, overnight

Secondary antibody-HRP: 1:5000-1:10000 in blocking buffer, RT, 45min

Detection: ECL, 30s-2min



Immunohistochemistry-Anti-XBP1 pAb

Sample: Mouse liver tissue

Antigen retrieval: pH 9.0 Tris-EDTA buffer

Primary antibody: 1:100, 4°C, overnight

Secondary antibody-Biotin: 1:150, 37°C, 1h

Streptavidin-HRP: 1:200, 37°C, 30min

Color Developing: DAB