

## Anti-Kallikrein 7/KLK7 Rabbit pAb



WL00916

For Research Use Only. Not For Use In Diagnostic Procedures

## Product Information

<b>Product name</b>	Anti-Kallikrein 7/KLK7 Rabbit pAb	
<b>Source</b>	Rabbit	
<b>Species reactivity</b>	Human, Mouse, Rat	
<b>Tested applications</b>	WB	1:1000-1:2000
	IHC	1:500
	IF	1:500

**Cellular localization** Secreted

**Pack size** 50/100/200/500/1000μl

**Storage** Store at -20°C. **Avoid freeze/thaw cycles.**

**Storage buffer** Supplied in 20 mM phosphate (pH 7.5), 150 mM NaCl, 100 μg/ml BSA, 50% glycerol and less than 0.02% sodium azide

## General Information

**Background** Kallikrein 7/KLK7 is member of the kallikrein subfamily of serine proteases. These enzymes have diverse physiological functions and many kallikrein genes are biomarkers for cancer. The encoded protein has chymotrypsin-like activity and plays a role in the proteolysis of intercellular cohesive structures that precedes desquamation, the shedding of the outermost layer of the epidermis.

**Immunogen** Polyclonal antibody is produced by immunizing animals with a synthetic peptide of Kallikrein 7/KLK7.

**Purification** Polyclonal antibody was purified by Protein A affinity chromatography.

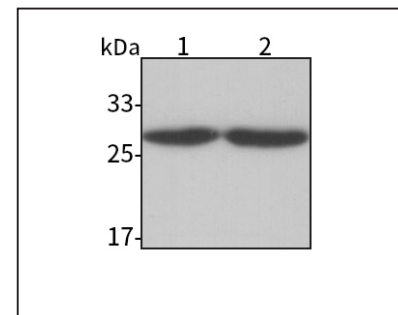
## Anti-Kallikrein 7/KLK7 Rabbit pAb



WL00916

For Research Use Only. Not For Use In Diagnostic Procedures

## Product Images



## Western blot-Anti-Kallikrein 7/KLK7 pAb

**Lane 1:** Mouse skin tissue lysate

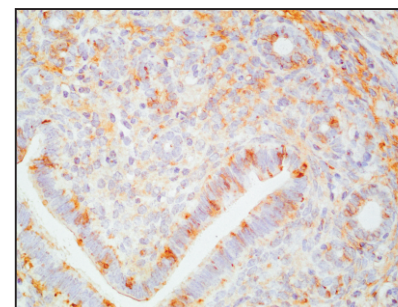
**Lane 2:** Rat skin tissue lysate

**All lanes:** Anti-Kallikrein 7/KLK7 at 1:1000 dilution

Lysates/proteins at 20-50 μg per lane.

Predicted band size: 28 kDa

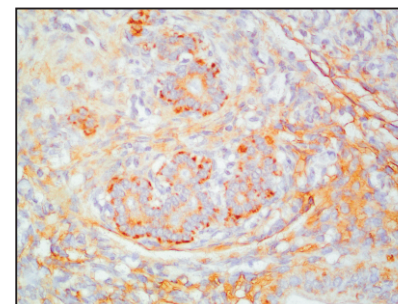
Observed band size: 28 kDa



## Immunohistochemistry-Anti-Kallikrein 7/KLK7 pAb

Immunohistochemical analysis of paraffin-embedded mouse uterus using anti-Kallikrein 7/KLK7 Rabbit Antibody at 1:500 dilution.

Perform heat mediated antigen retrieval with Tris-EDTA buffer pH 9.0



## Immunohistochemistry-Anti-Kallikrein 7/KLK7 pAb

Immunohistochemical analysis of paraffin-embedded rat uterus using anti-Kallikrein 7/KLK7 Rabbit Antibody at 1:500 dilution.

Perform heat mediated antigen retrieval with Tris-EDTA buffer pH 9.0

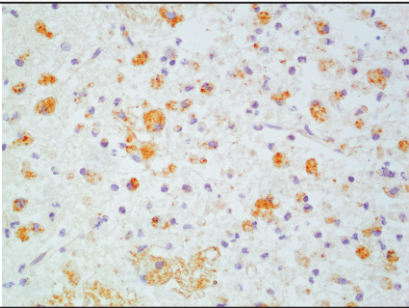
Anti-Kallikrein 7/KLK7 Rabbit pAb



WL00916

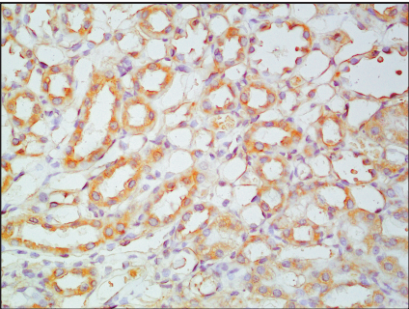
For Research Use Only. Not For Use In Diagnostic Procedures

Product Information



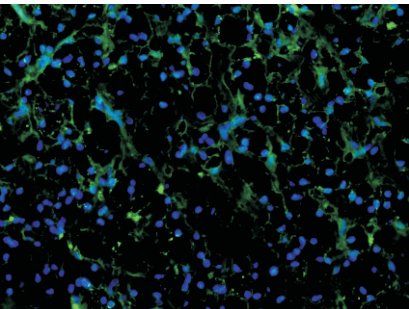
Immunohistochemistry-Anti-Kallikrein 7/KLK7 pAb

Immunohistochemical analysis of paraffin-embedded rat brain using anti-Kallikrein 7/KLK7 Rabbit Antibody at 1:500 dilution.  
Perform heat mediated antigen retrieval with Tris-EDTA buffer pH 9.0



Immunohistochemistry-Anti-Kallikrein 7/KLK7 pAb

Immunohistochemical analysis of paraffin-embedded rat kidney using anti-Kallikrein 7/KLK7 Rabbit Antibody at 1:500 dilution.  
Perform heat mediated antigen retrieval with Tris-EDTA buffer pH 9.0



Immunofluorescence-Anti-Kallikrein 7/KLK7 pAb

Immunofluorescence analysis of paraffin-embedded human kidney cancer using anti-Kallikrein 7/KLK7 Rabbit Antibody at 1:500 dilution.  
Perform heat mediated antigen retrieval with Tris-EDTA buffer pH 9.0

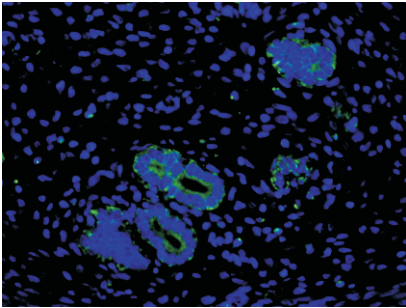
Anti-Kallikrein 7/KLK7 Rabbit pAb



WL00916

For Research Use Only. Not For Use In Diagnostic Procedures

Product Images



Immunofluorescence-Anti-Kallikrein 7/KLK7 pAb

Immunofluorescence analysis of paraffin-embedded rat uterus using anti-Kallikrein 7/KLK7 Rabbit Antibody at 1:500 dilution.  
Perform heat mediated antigen retrieval with Tris-EDTA buffer pH 9.0