

Anti-LAMP-1 Rabbit pAb



WL02419

For Research Use Only. Not For Use In Diagnostic Procedures

Product Information

| | | |
|----------------------------|---|--------------|
| Product name | Anti-LAMP-1 Rabbit pAb | |
| Source | Rabbit | |
| Species reactivity | Human | |
| Tested applications | WB | 1:500-1:1000 |
| Pack size | 50/100/200/500/1000μl | |
| Storage | Store at -20°C. Avoid freeze/thaw cycles. | |
| Storage buffer | Supplied in 20 mM phosphate (pH 7.5), 150 mM NaCl, 100 μg/ml BSA, 50% glycerol and less than 0.02% sodium azide | |

General Information

| | |
|---------------------|--|
| Background | Lysosome-associated membrane proteins (LAMP) are glycosylated type I membrane proteins that play a role in the biogenesis of the pigment melanin. LAMP-1 (also designated CD107a) and LAMP-2 (also designated CD107b) are involved in a variety of functions, including cellular adhesion, and are thought to participate in the process of tumor invasion and metastasis. Both are transmembrane proteins and are heavily glycosylated at the amino-terminal luminal side of the lysosomal inner leaflet, which protects the proteins from proteolysis. The carboxy terminus of LAMP1 is exposed to the cytoplasm and contains a tyrosine sorting motif that targets LAMP to lysosomal membranes. |
| Immunogen | Polyclonal antibody is produced by immunizing animals with a synthetic peptide of LAMP-1. |
| Purification | Polyclonal antibody was purified by immunogen affinity chromatography. |

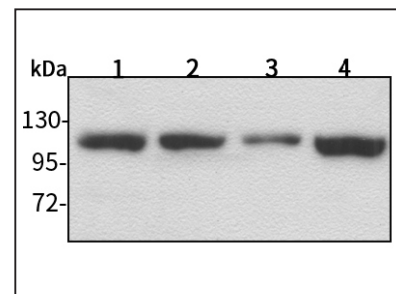
Anti-LAMP-1 Rabbit pAb



WL02419

For Research Use Only. Not For Use In Diagnostic Procedures

Product Images



Western blot-Anti-LAMP-1 pAb

Lane 1: Human HepG2 cell lysate
 Lane 2: Human Hela cell lysate
 Lane 3: Human BGC-823 cell lysate
 Lane 4: Human MGC-803 cell lysate
 All lanes: Anti-LAMP-1 at 1:1000 dilution
 Lysates/proteins at 20-50 μg per lane.
 Predicted band size: 45 kDa
 Observed band size: 90-120 kDa