

Anti-Ephrin A3 Rabbit pAb



WL01063

For Research Use Only. Not For Use In Diagnostic Procedures

Product Information

Product name	Anti-Ephrin A3 Rabbit pAb		
Source	Rabbit		
Species reactivity	Human, Mouse, Rat		
Tested applications	WB	1:1000-1:2000	
Pack size	50/100/200/500/1000µl		
Storage	Store at -20°C. Avoid freeze/thaw cycles.		
Storage buffer	Supplied in 20 mM phosphate (pH 7.5), 150 mM NaCl, 100 µg/ml BSA, 50% glycerol and less than 0.02% sodium azide		

General Information

Background	Ephrin A3 is a member of the ephrin (EPH) family. The ephrins and EPH-related receptors comprise the largest subfamily of receptor protein-tyrosine kinases and have been implicated in mediating developmental events, especially in the nervous system and in erythropoiesis. Based on their structures and sequence relationships, ephrins are divided into the ephrin-A (EFNA) class, which are anchored to the membrane by a glycosylphosphatidylinositol linkage, and the ephrin-B (EFNB) class, which are transmembrane proteins.
-------------------	--

Immunogen	Polyclonal antibody is produced by immunizing animals with a synthetic peptide of Ephrin A3.
------------------	--

Purification	Polyclonal antibody was purified by Protein A affinity chromatography.
---------------------	--

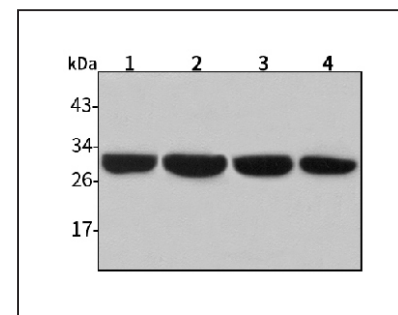
Anti-Ephrin A3 Rabbit pAb



WL01063

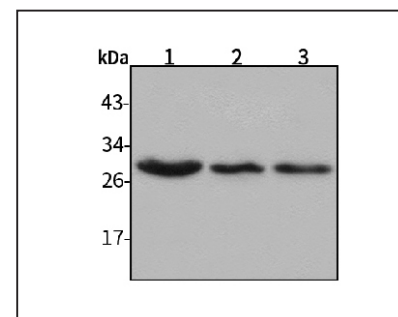
For Research Use Only. Not For Use In Diagnostic Procedures

Product Images



Western blot-Anti-Ephrin A3 pAb

Lane 1: Human HepG2 cell lysate
 Lane 2: Human Hela cell lysate
 Lane 3: Human BGC-823 cell lysate
 Lane 4: Human MGC-803 cell lysate
 All lanes: Anti-Ephrin A3 at 1:1000 dilution
 Lysates/proteins at 20-50 µg per lane.
 Predicted band size: 26 kDa
 Observed band size: 26-35 kDa



Western blot-Anti-Ephrin A3 pAb

Lane 1: Mouse kidney tissue lysate
 Lane 2: Mouse liver tissue lysate
 Lane 3: Rat brain tissue lysate
 All lanes: Anti-Ephrin A3 at 1:1000 dilution
 Lysates/proteins at 20-50 µg per lane.
 Predicted band size: 26 kDa
 Observed band size: 26-35 kDa