

Anti-Doublecortin Rabbit pAb



WL02550

For Research Use Only. Not For Use In Diagnostic Procedures

Product Information

Product name	Anti-Doublecortin Rabbit pAb	
Source	Rabbit	
Species reactivity	Human, Mouse, Rat	
Tested applications	WB	1:500-1:1000
Pack size	50/100/200/500/1000μl	
Storage	Store at -20°C. Avoid freeze/thaw cycles.	
Storage buffer	Supplied in 20 mM phosphate (pH 7.5), 150 mM NaCl, 100 μg/ml BSA, 50% glycerol and less than 0.02% sodium azide	

General Information

Background

The name Doublecortin comes from the unusual layering of the cortex in this form of lissencephaly (smooth brain), which appears to have a second deep cortical layer of neurons. This layer consists of neurons which did not migrate from the subventricular zone to the normal cortical layer. Doublecortin is a microtubule associated protein that stabilizes and bundles microtubules. A conserved doublecortin domain mediates the interaction with microtubules, and interestingly most missense mutations cluster in this domain.

Immunogen

Polyclonal antibody is produced by immunizing animals with a synthetic peptide of Doublecortin.

Purification

Polyclonal antibody was purified by immunogen affinity chromatography.

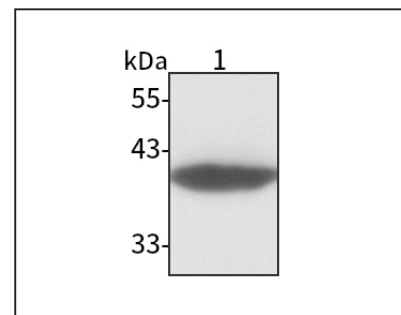
Anti-Doublecortin Rabbit pAb



WL02550

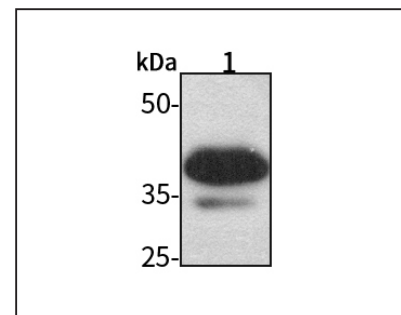
For Research Use Only. Not For Use In Diagnostic Procedures

Product Images



Western blot-Anti-Doublecortin pAb

Lane 1: Human SH-SY5Y cell lysate
All lanes: Anti-Doublecortin at 1:1000 dilution
 Lysates/proteins at 20-50 μg per lane.
 Predicted band size: 40-45 kDa
 Observed band size: 40-45 kDa



Western blot-Anti-Doublecortin pAb

Lane 1: Mouse brain tissue lysate
All lanes: Anti-Doublecortin at 1:1000 dilution
 Lysates/proteins at 20-50 μg per lane.
 Predicted band size: 40-45 kDa
 Observed band size: 40-45 kDa