

Anti-CD8A Rabbit pAb



WL01102

For Research Use Only. Not For Use In Diagnostic Procedures

Product Information

Product name	Anti-CD8A Rabbit pAb	
Source	Rabbit	
Species reactivity	Human, Mouse, Rat	
Tested applications	WB	1:1000-1:2000
	IHC	1:500
	IF	1:500
Pack size	50/100/200/500/1000μl	
Storage	Store at -20°C. Avoid freeze/thaw cycles.	
Storage buffer	Supplied in 20 mM phosphate (pH 7.5), 150 mM NaCl, 100 μg/ml	
	BSA, 50% glycerol and less than 0.02% sodium azide	

General Information

Background	Human T-cell surface glycoprotein CD8 alpha chain, also known as CD8a, is a single-pass type I membrane protein. The CD8 antigen acts as a coreceptor with the T-cell receptor on the T lymphocyte to recognize antigens displayed by an antigen presenting cell in the context of class I MHC molecules. Both human and rodent CD8 antigens are comprised of two distinct polypeptide chains, alpha and beta. The Ig domains of CD8 alpha are involved in controlling the ability of CD8 to be expressed. Mutation of B- and F-strand cysteine residues in CD8 alpha reduced the ability of the protein to fold properly and, therefore, to be expressed.
Immunogen	Polyclonal antibody is produced by immunizing animals with a synthetic peptide of CD8A.
Purification	Polyclonal antibody was purified by Protein A affinity chromatography.

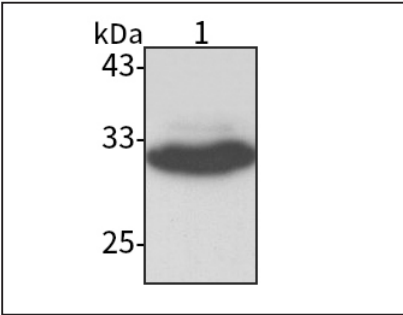
Anti-CD8A Rabbit pAb



WL01102

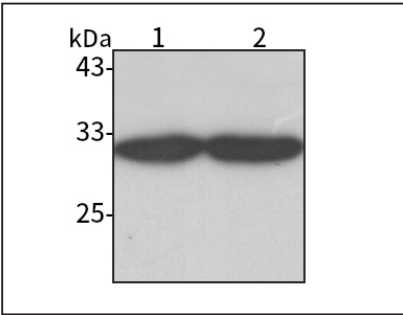
For Research Use Only. Not For Use In Diagnostic Procedures

Product Images



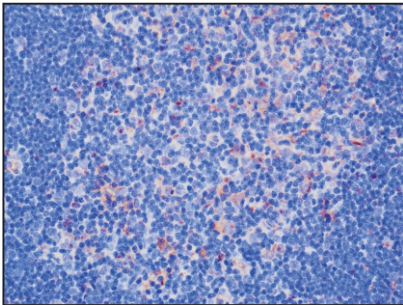
Western blot-Anti-CD8A pAb

Lane 1: Human Jurkat cell lysate
All lanes: Anti-CD8A at 1:1000 dilution
Lysates/proteins at 20-50 μg per lane.
Predicted band size: 26 kDa
Observed band size: 28-32 kDa



Western blot-Anti-CD8A pAb

Lane 1: Mouse spleen tissue lysate
Lane 2: Rat spleen tissue lysate
All lanes: Anti-CD8A at 1:1000 dilution
Lysates/proteins at 20-50 μg per lane.
Predicted band size: 26 kDa
Observed band size: 28-32 kDa



Immunohistochemistry-Anti-CD8A pAb

Immunohistochemical analysis of paraffin-embedded rat thymus using anti-CD8A Rabbit Antibody at 1:500 dilution.
Perform heat mediated antigen retrieval with Tris-EDTA buffer pH 9.0

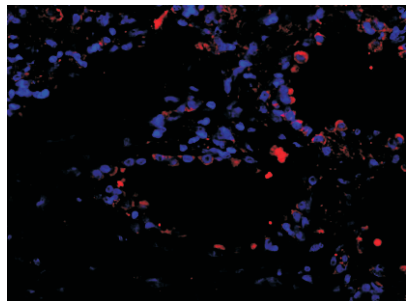
Anti-CD8A Rabbit pAb



WL01102

For Research Use Only. Not For Use In Diagnostic Procedures

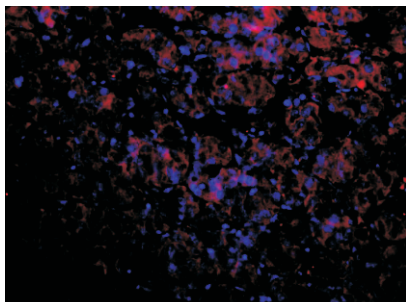
Product Information



Immunofluorescence-Anti-CD8A pAb

Immunofluorescence analysis of paraffin-embedded human lung cancer using anti-CD8A Rabbit Antibody at 1:500 dilution.

Perform heat mediated antigen retrieval with Tris-EDTA buffer pH 9.0



Immunofluorescence-Anti-CD8A pAb

Immunofluorescence analysis of paraffin-embedded human adenocarcinoma using anti-CD8A Rabbit Antibody at 1:500 dilution.

Perform heat mediated antigen retrieval with Tris-EDTA buffer pH 9.0