

## Anti-TBP Rabbit pAb



WL02341

For Research Use Only. Not For Use In Diagnostic Procedures

## Product Information

<b>Product name</b>	Anti-TBP Rabbit pAb
<b>Source</b>	Rabbit
<b>Species reactivity</b>	Human, Mouse, Rat
<b>Tested applications</b>	Western blot 1:500-1:1000
	<i>*Suggested working dilutions are given as a guide only. It is recommended that the user titrates the product for use in their own experiment using appropriate negative and positive controls.</i>
<b>Molecular Wt.</b>	38 kDa
<b>Pack size</b>	50/100/200/500/1000μl
<b>Storage</b>	Store at -20°C. <b>Avoid freeze/thaw cycles.</b>
<b>Storage buffer</b>	Supplied in 20 mM phosphate (pH 7.5), 150 mM NaCl, 100 μg/ml BSA, 50% glycerol and less than 0.02% sodium azide

## General Information

<b>Background</b>	Initiation of transcription by RNA polymerase II requires the activities of more than 70 polypeptides. The protein that coordinates these activities is transcription factor IID (TFIID), which binds to the core promoter to position the polymerase properly, serves as the scaffold for assembly of the remainder of the transcription complex, and acts as a channel for regulatory signals. TATA-binding protein (TBP) is a ubiquitously expressed nuclear protein that functions at the core of the general transcription factor protein complex TFIID. TBP functions in the recruitment of TFIID by binding to the TATA-box sequence found approximately 25 base pairs upstream of the transcription start site of many protein-coding genes.
<b>Immunogen</b>	Polyclonal antibody is produced by immunizing animals with a synthetic peptide of TBP.
<b>Purification</b>	Polyclonal antibody was purified by immunogen affinity chromatography.

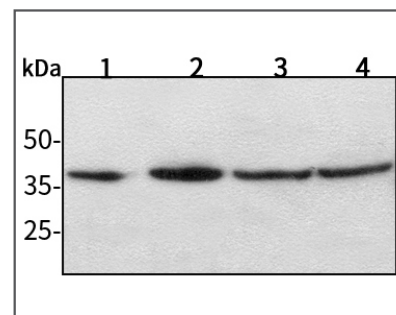
## Anti-TBP Rabbit pAb



WL02341

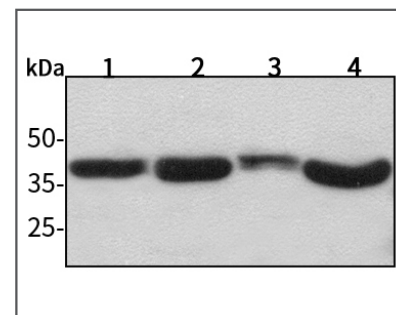
For Research Use Only. Not For Use In Diagnostic Procedures

## Product Images



Western blot-Anti-TBP pAb

Lane 1: Human BGC-823 cell lysate 30μg  
 Lane 2: Human MGC-803 cell lysate 30μg  
 Lane 3: Human SGC-7901 cell lysate 30μg  
 Lane 4: Human MCF-7 cell lysate 30μg  
 Separation gel: 11% polyacrylamide  
 Electrophoresis: 100V, 4°C, 3h  
 Transmembrane: 100V, 4°C, 1.5-2h  
 Blocking: 5% w/v nonfat dry milk, 1 × TBST, at RT with gentle shaking  
 Primary antibody: 1:1000 in blocking buffer, 4°C, overnight  
 Secondary antibody (WLA023a) : 1:5000-1:10000, 45min  
 Detection: ECL, 30s-2min



Western blot-Anti-TBP pAb

Lane 1: Mouse kidney tissue lysate 30μg  
 Lane 2: Mouse heart tissue lysate 30μg  
 Lane 3: Rat liver tissue lysate 30μg  
 Lane 4: Rat testicle tissue lysate 30μg  
 Separation gel: 11% polyacrylamide  
 Electrophoresis: 100V, 4°C, 3h  
 Transmembrane: 100V, 4°C, 1.5-2h  
 Blocking: 5% w/v nonfat dry milk, 1 × TBST, at RT with gentle shaking  
 Primary antibody: 1:1000 in blocking buffer, 4°C, overnight  
 Secondary antibody (WLA023a) : 1:5000-1:10000, 45min  
 Detection: ECL, 30s-2min