

Anti-IRF2BP1 Rabbit pAb



WL00237

For Research Use Only. Not For Use In Diagnostic Procedures

Product Information

Product name	Anti-IRF2BP1 Rabbit pAb		
Source	Rabbit		
Species reactivity	Human, Mouse, Rat		
Tested applications	WB	1:500-1:1000	
Pack size	50/100/200/500/1000µl		
Storage	Store at -20°C. Avoid freeze/thaw cycles.		
Storage buffer	Supplied in 20 mM phosphate (pH 7.5), 150 mM NaCl, 100 µg/ml BSA, 50% glycerol and less than 0.02% sodium azide		

General Information

Background	Acts as a transcriptional repressor. Acts as a transcriptional corepressor in a IRF2-dependent manner. This repression is not mediated at least in part by histone deacetylase activities.
------------	--

Immunogen	Polyclonal antibody is produced by immunizing animals with a synthetic peptide of IRF2BP1.
-----------	--

Purification	Polyclonal antibody was purified by immunogen affinity chromatography.
--------------	--

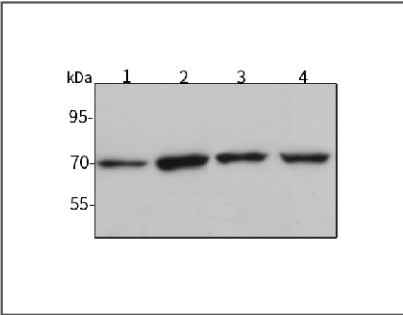
Anti-IRF2BP1 Rabbit pAb



WL00237

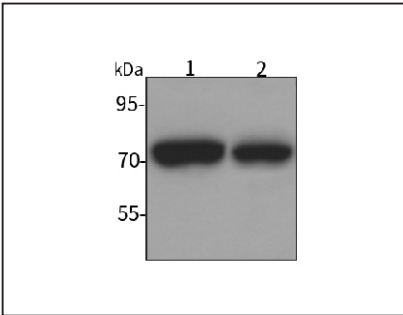
For Research Use Only. Not For Use In Diagnostic Procedures

Product Images



Western blot-Anti-IRF2BP1 pAb

Lane 1: Human Hela cell lysate
Lane 2: Human HEK-293 cell lysate
Lane 3: Human A549 cell lysate
Lane 4: Human HCT116 cell lysate
All lanes: Anti-IRF2BP1 at 1:1000 dilution
Lysates/proteins at 20-50 µg per lane.
Predicted band size: 62 kDa
Observed band size: 70 kDa



Western blot-Anti-IRF2BP1 pAb

Lane 1: Mouse brain tissue lysate
Lane 2: Rat brain tissue lysate
All lanes: Anti-IRF2BP1 at 1:1000 dilution
Lysates/proteins at 20-50 µg per lane.
Predicted band size: 62 kDa
Observed band size: 70 kDa