

Anti-HAT1 Rabbit pAb



For Research Use Only. Not For Use In Diagnostic Procedures

Product Information

Product name	Anti-HAT1 Rabbit pAb
Source	Rabbit
Species reactivity	Human, Mouse, Rat
Tested applications	IHC1:100-1:400
Cellular localization	Nucleus matrix and Cytoplasm. Nucleus
Pack size	50/100/200/500/1000μl
Storage	Store at -20°C. Avoid freeze/thaw cycles.
Storage buffer	Supplied in 20 mM phosphate (pH 7.5), 150 mM NaCl, 100 μg/ml BSA, 50% glycerol and less than 0.02% sodium azide

General Information

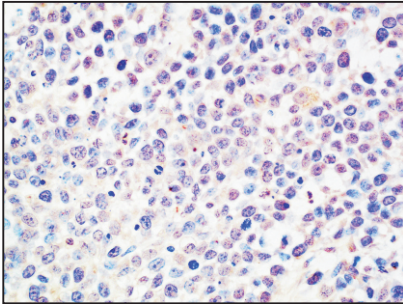
Background	It is a type B histone acetyltransferase (HAT) that is involved in the rapid acetylation of newly synthesized cytoplasmic histones, which are in turn imported into the nucleus for de novo deposition onto nascent DNA chains. this HAT can acetylate soluble but not nucleosomal histone H4 at lysines 5 and 12, and to a lesser degree, histone H2A at lysine 5.
Immunogen	Polyclonal antibody is produced by immunizing animals with a synthetic peptide of HAT1.
Purification	Polyclonal antibody was purified by immunogen affinity chromatography.

Anti-HAT1 Rabbit pAb

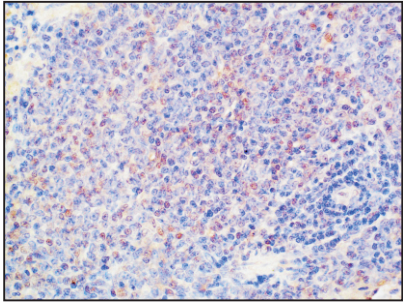


For Research Use Only. Not For Use In Diagnostic Procedures

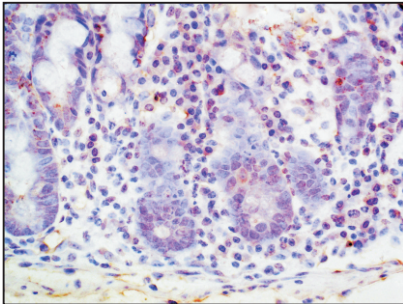
Product Images



Immunohistochemistry-Anti-HAT1 pAb
Immunohistochemical analysis of paraffin-embedded human BGC-823 cell tumorigenic tissue using anti-HAT1 Rabbit Antibody at 1:200 dilution. Perform heat mediated antigen retrieval with Tris-EDTA buffer pH 9.0



Immunohistochemistry-Anti-HAT1 pAb
Immunohistochemical analysis of paraffin-embedded rat spleen using anti-HAT1 Rabbit Antibody at 1:200 dilution. Perform heat mediated antigen retrieval with Tris-EDTA buffer pH 9.0



Immunohistochemistry-Anti-HAT1 pAb
Immunohistochemical analysis of paraffin-embedded mouse colon using anti-HAT1 Rabbit Antibody at 1:200 dilution. Perform heat mediated antigen retrieval with Tris-EDTA buffer pH 9.0