

Anti-CPLX1 Rabbit pAb



WL00348

For Research Use Only. Not For Use In Diagnostic Procedures

Product Information

Product name	Anti-CPLX1 Rabbit pAb	
Source	Rabbit	
Species reactivity	Human, Mouse, Rat	
Tested applications	WB	1:1000-1:2000
	IHC	1:500
	IF	1:500

Cellular localization Cytoplasm Perikaryon, Synapse

Pack size 50/100/200/500/1000μl

Storage Store at -20°C. **Avoid freeze/thaw cycles.**

Storage buffer Supplied in 20 mM phosphate (pH 7.5), 150 mM NaCl, 100 μg/ml BSA, 50% glycerol and less than 0.02% sodium azide

General Information

Background Complexin 1 (CPLX1) is a member of the complexin/synaphin gene family, which are cytosolic proteins that function in synaptic vesicle exocytosis. Proteins encoded by the complexin/synaphin gene family are cytosolic proteins that function in synaptic vesicle exocytosis. These proteins bind syntaxin, part of the SNAP receptor. CLPX1 binds to the SNAP receptor complex and disrupts it, leading to the release of transmitters.

Immunogen Polyclonal antibody is produced by immunizing animals with a synthetic peptide of CPLX1.

Purification Polyclonal antibody was purified by Protein A affinity chromatography.

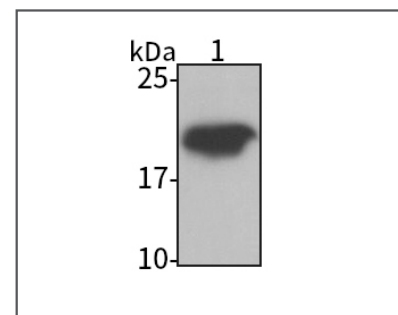
Anti-CPLX1 Rabbit pAb



WL00348

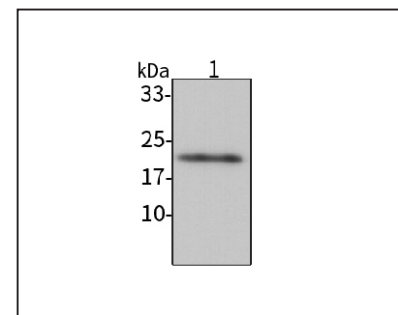
For Research Use Only. Not For Use In Diagnostic Procedures

Product Images



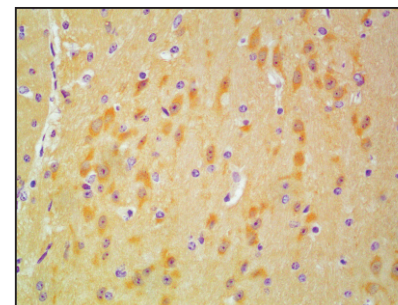
Western blot-Anti-CPLX1 pAb

Lane 1: Human SH-SY5Y cell lysate
All lanes: Anti-CPLX1 at 1:1000 dilution
 Lysates/proteins at 20-50 μg per lane.
 Predicted band size: 15 kDa
 Observed band size: 20 kDa



Western blot-AntiCPLX1 pAb

Lane 1: Mouse brain tissue lysate
All lanes: Anti-CPLX1 at 1:1000 dilution
 Lysates/proteins at 20-50 μg per lane.
 Predicted band size: 15 kDa
 Observed band size: 20 kDa



Immunohistochemistry-Anti-CPLX1 pAb

Immunohistochemical analysis of paraffin-embedded mouse brain using anti-CPLX1 Rabbit Antibody at 1:500 dilution.
 Perform heat mediated antigen retrieval with Tris-EDTA buffer pH 9.0

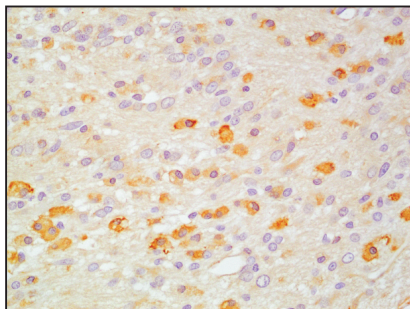
Anti-CPLX1 Rabbit pAb



WL00348

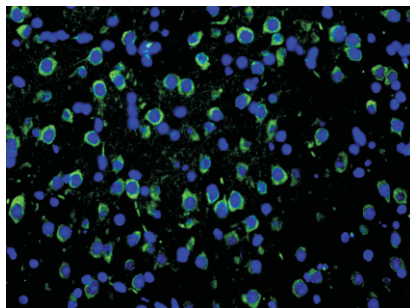
For Research Use Only. Not For Use In Diagnostic Procedures

Product Information



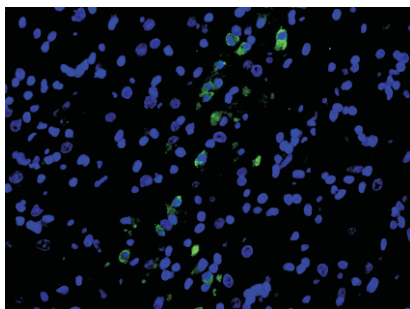
Immunohistochemistry-Anti-CPLX1 pAb

Immunohistochemical analysis of paraffin-embedded rat cerebral hemorrhage brain using anti-CPLX1 Rabbit Antibody at 1:500 dilution. Perform heat mediated antigen retrieval with Tris-EDTA buffer pH 9.0



Immunofluorescence-Anti-CPLX1 pAb

Immunofluorescence analysis of paraffin-embedded mouse brain using anti-CPLX1 Rabbit Antibody at 1:500 dilution. Perform heat mediated antigen retrieval with Tris-EDTA buffer pH 9.0



Immunofluorescence-Anti-CPLX1 pAb

Immunofluorescence analysis of paraffin-embedded rat brain using anti-CPLX1 Rabbit Antibody at 1:500 dilution. Perform heat mediated antigen retrieval with Tris-EDTA buffer pH 9.0