

Anti-SGK1 Rabbit pAb



WL02741

For Research Use Only. Not For Use In Diagnostic Procedures

Product Information

Product name	Anti-SGK1 Rabbit pAb	
Source	Rabbit	
Species reactivity	Human, Mouse, Rat	
Tested applications	WB	1:500-1:1000
	IHC	1:200
Cellular localization	Cell membrane and Cytoplasm. Nucleus	
Pack size	50/100/200/500/1000μl	
Storage	Store at -20°C. Avoid freeze/thaw cycles.	
Storage buffer	Supplied in 20 mM phosphate (pH 7.5), 150 mM NaCl, 100 μg/ml	
	BSA, 50% glycerol and less than 0.02% sodium azide	

General Information

Background	Serum- and glucocorticoid-regulated kinase (SGK), also known as SGK1, is a serine/threonine protein kinase and a member of the “AGC” subfamily, which includes protein kinases A, G, and C. SGK plays an important role in activating certain potassium, sodium, and chloride channels, suggesting its involvement in the regulation of processes such as cell survival, neuronal excitability, and renal sodium excretion. SGK is rapidly induced in response to a variety of stimuli, including serum, glucocorticoid, follicle stimulating hormone, osmotic shock, and mineralocorticoids. SGK is also a component of the p38 MAPK-mediated response to hyperosmotic stress. In addition to its membrane channel and carrier functions, SGK1 also regulates a broad range of targets, such as GSK-3, NEDD4, iNOS, AMPAR, PSD95, Tau, NF-κB, CREB, and FKHR-L1. Polyclonal antibody is produced by immunizing animals with a synthetic peptide of SGK1.
Immunogen	
Purification	Polyclonal antibody was purified by immunogen affinity chromatography.

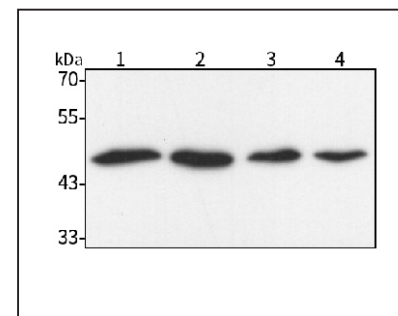
Anti-SGK1 Rabbit pAb



WL02741

For Research Use Only. Not For Use In Diagnostic Procedures

Product Images



Western blot-Anti-SGK1 pAb

Lane 1: Human MDA-MB-231 cell lysate

Lane 2: Human Hela cell lysate

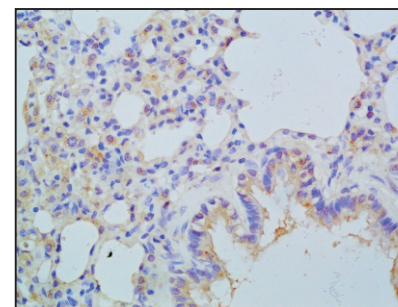
Lane 3: Human A549 cell lysate

Lane 4: Human HEK293 cell lysate

All lanes: Anti-SGK1 at 1:1000 dilution

Lysates/proteins at 20-50 μg per lane.

Predicted band size: 49 kDa



Immunohistochemistry-Anti-SGK1 pAb

Immunohistochemical analysis of paraffin-embedded rat lung using anti-SGK1 Rabbit Antibody at 1:200 dilution.

Perform heat mediated antigen retrieval with Tris-EDTA buffer pH 9.0