

Anti-CRP Rabbit pAb



WL05808

For Research Use Only. Not For Use In Diagnostic Procedures

Product Information

Product name	Anti-CRP Rabbit pAb	
Source	Rabbit	
Species reactivity	Human, Mouse, Rat	
Tested applications	WB	1:1000-1:2000
	IHC	1:500-1:1000
	IF	1:500-1:1000

Cellular localization Secreted

Pack size 50/100/200/500/1000μl

Storage Store at -20°C. **Avoid freeze/thaw cycles.**

Storage buffer Supplied in 20 mM phosphate (pH 7.5), 150 mM NaCl, 100 μg/ml BSA, 50% glycerol and less than 0.02% sodium azide

General Information

Background C-reactive protein (CRP) is an acute-phase serum protein synthesized by the liver in response to interleukin-6 (IL-6) during inflammation. It is involved in several host defense related functions based on its ability to recognize foreign pathogens and damaged cells of the host and to initiate their elimination by interacting with humoral and cellular effector systems in the blood. Consequently, the level of this protein in plasma increases greatly during acute phase response to tissue injury, infection, or other inflammatory stimuli.

Immunogen Polyclonal antibody is produced by immunizing animals with a synthetic peptide of CRP.

Purification Polyclonal antibody was purified by Protein A affinity chromatography.

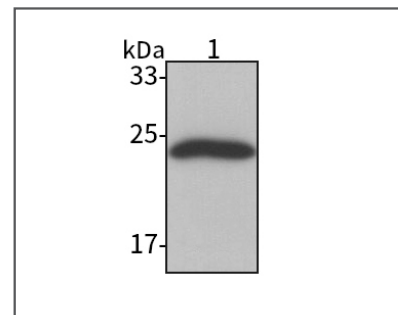
Anti-CRP Rabbit pAb



WL05808

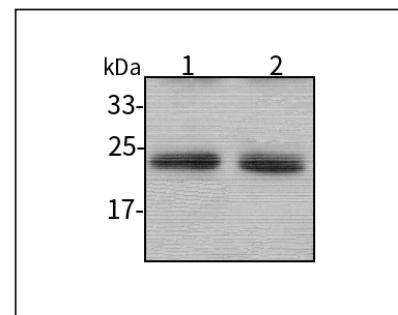
For Research Use Only. Not For Use In Diagnostic Procedures

Product Images



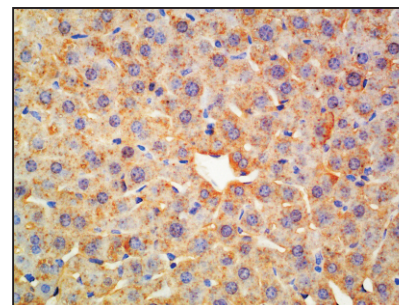
Western blot-Anti-CRP pAb

Lane 1: Human plasma lysate
All lanes: Anti-CRP at 1:1000 dilution
Lysates/proteins at 20-50 μg per lane.
Predicted band size: 24 kDa
Observed band size: 24 kDa



Western blot-Anti-CRP pAb

Lane 1: Mouse liver tissue lysate
Lane 2: Rat liver tissue lysate
All lanes: Anti-CRP at 1:1000 dilution
Lysates/proteins at 20-50 μg per lane.
Predicted band size: 24 kDa
Observed band size: 24 kDa



Immunohistochemistry-Anti-CRP pAb

Immunohistochemical analysis of paraffin-embedded mouse liver using anti-CRP Rabbit Antibody at 1:500 dilution.
Perform heat mediated antigen retrieval with Tris-EDTA buffer pH 9.0

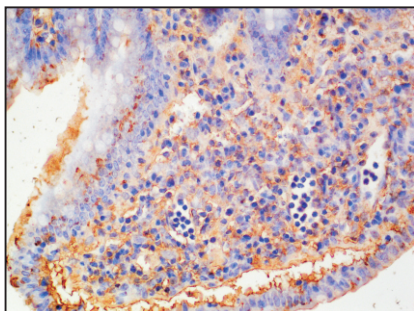
Anti-CRP Rabbit pAb



WL05808

For Research Use Only. Not For Use In Diagnostic Procedures

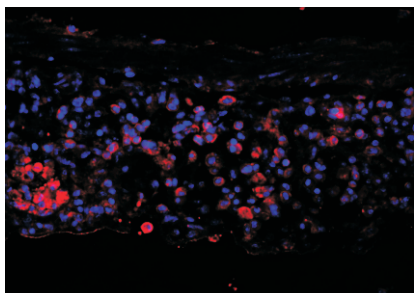
Product Information



Immunohistochemistry-Anti-CRP pAb

Immunohistochemical analysis of paraffin-embedded rat colon using anti-CRP Rabbit Antibody at 1:500 dilution.

Perform heat mediated antigen retrieval with Tris-EDTA buffer pH 9.0



Immunofluorescence-Anti-CRP pAb

Immunofluorescence analysis of paraffin-embedded mouse colon using anti-CRP Rabbit Antibody at 1:500 dilution.

Perform heat mediated antigen retrieval with Tris-EDTA buffer pH 9.0