

Anti-ERCC1 Rabbit pAb



WL04855

For Research Use Only. Not For Use In Diagnostic Procedures

Product Information

Product name	Anti-ERCC1 Rabbit pAb	
Source	Rabbit	
Species reactivity	Human	
Tested applications	WB	1:500-1:1000
Pack size	50/100/200/500/1000μl	
Storage	Store at -20°C. Avoid freeze/thaw cycles.	
Storage buffer	Supplied in 20 mM phosphate (pH 7.5), 150 mM NaCl, 100 μg/ml BSA, 50% glycerol and less than 0.02% sodium azide	

General Information

Background	Excision Repair Cross Complementing 1 (ERCC1) is a structure-specific endonuclease that is responsible for the 5'-incision during DNA repair. It forms a complex with ERCC11, XPF and ERCC4, which are required in both recombinatorial repair and nucleotide excision repair.
-------------------	--

Immunogen	Polyclonal antibody is produced by immunizing animals with a synthetic peptide of ERCC1.
------------------	--

Purification	Polyclonal antibody was purified by immunogen affinity chromatography.
---------------------	--

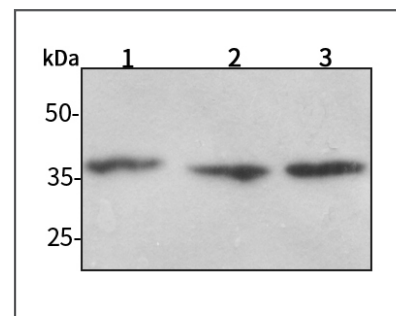
Anti-ERCC1 Rabbit pAb



WL04855

For Research Use Only. Not For Use In Diagnostic Procedures

Product Images



Western blot-Anti-ERCC1 pAb

Lane 1: Human HeLa cell lysate

Lane 2: Human MCF-7 cell lysate

Lane 3: Human HEK-293 cell lysate

All lanes: Anti-ERCC1 at 1:1000 dilution

Lysates/proteins at 20-50 μg per lane.

Predicted band size: 33 kDa

Observed band size: 36 kDa