

Anti-FUNDC1 Rabbit pAb



WLA0305

For Research Use Only. Not For Use In Diagnostic Procedures

Product Information

Product name	Anti-FUNDC1 Rabbit pAb	
Source	Rabbit	
Species reactivity	Human, Mouse, Rat	
Tested applications	WB	1:500-1:1000
	IHC, IF	1:100-1:200
Cellular localization	Mitochondrion outer membrane.	
Pack size	50/100/200/500/1000μl	
Storage	Store at -20°C. Avoid freeze/thaw cycles.	
Storage buffer	Supplied in 20 mM phosphate (pH 7.5), 150 mM NaCl, 100 μg/ml	
	BSA, 50% glycerol and less than 0.02% sodium azide	

General Information

Background	FundC1 is a novel mitochondrial associated membrane (MAM) protein with the FUN14 superfamily domain. FundC1 can act as an activator of mitochondria caused by hypoxia, which is an important mechanism for mitochondrial quality control.
Immunogen	Polyclonal antibody is produced by immunizing animals with a synthetic peptide of FUNDC1.
Purification	Polyclonal antibody was purified by immunogen affinity chromatography.

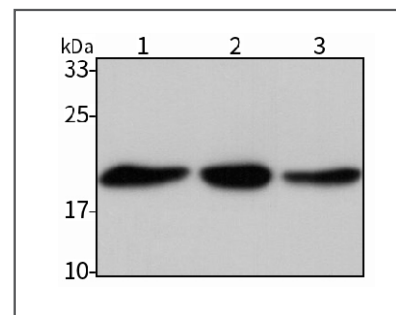
Anti-FUNDC1 Rabbit pAb



WLA0305

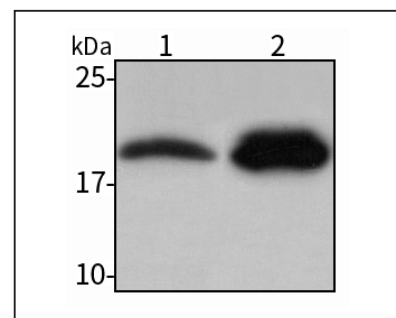
For Research Use Only. Not For Use In Diagnostic Procedures

Product Images



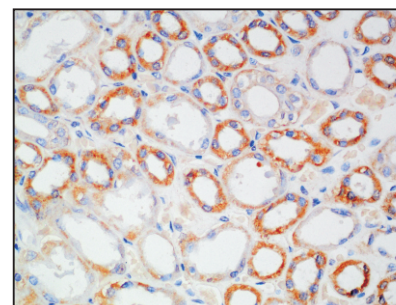
Western blot-Anti-FUNDC1 pAb

Lane 1: Human Hela cell lysate
Lane 2: Human HEK293 cell lysate
Lane 3: Human HCT116 cell lysate
All lanes: Anti-FUNDC1 at 1:1000 dilution
 Lysates/proteins at 20-50 μg per lane
 Predicted band size: 18 kDa
 Observed band size: 18 kDa



Western blot-Anti-FUNDC1 pAb

Lane 1: Mouse kidney tissue lysate
Lane 2: Rat heart tissue lysate
All lanes: Anti-FUNDC1 at 1:1000 dilution
 Lysates/proteins at 20-50 μg per lane
 Predicted band size: 18 kDa
 Observed band size: 18 kDa



Immunohistochemistry-Anti-FUNDC1 pAb

Immunohistochemical analysis of paraffin-embedded human kidney using anti-FUNDC1 Rabbit Antibody at 1:100 dilution.
 Perform heat mediated antigen retrieval with Tris-EDTA buffer pH 9.0

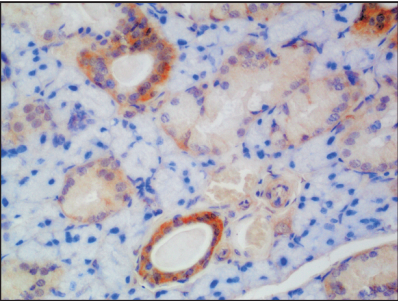
Anti-FUNDC1 Rabbit pAb



WLA0305

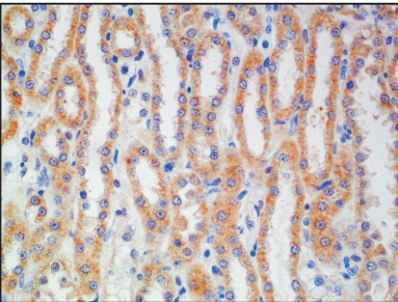
For Research Use Only. Not For Use In Diagnostic Procedures

Product Information



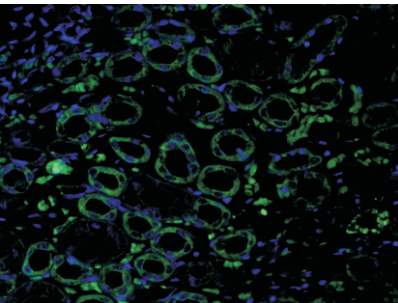
Immunohistochemistry-Anti-FUNDC1 pAb

Immunohistochemical analysis of paraffin-embedded mouse salivary gland using anti-FUNDC1 Rabbit Antibody at 1:100 dilution.
Perform heat mediated antigen retrieval with Tris-EDTA buffer pH 9.0



Immunohistochemistry-Anti-FUNDC1 pAb

Immunohistochemical analysis of paraffin-embedded rat kidney using anti-FUNDC1 Rabbit Antibody at 1:100 dilution.
Perform heat mediated antigen retrieval with Tris-EDTA buffer pH 9.0



Immunofluorescence-Anti-FUNDC1 pAb

Immunofluorescence analysis of paraffin-embedded human kidney using anti-FUNDC1 Rabbit Antibody at 1:100 dilution.
Perform heat mediated antigen retrieval with Tris-EDTA buffer pH 9.0

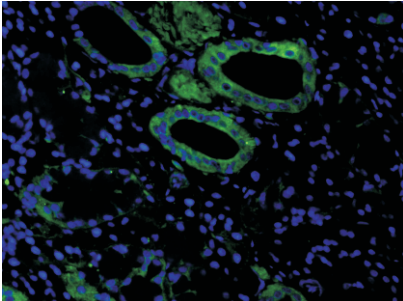
Anti-FUNDC1 Rabbit pAb



WLA0305

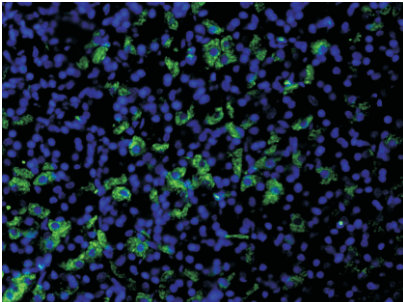
For Research Use Only. Not For Use In Diagnostic Procedures

Product Information



Immunofluorescence-Anti-FUNDC1 pAb

Immunofluorescence analysis of paraffin-embedded mouse salivary gland using anti-FUNDC1 Rabbit Antibody at 1:100 dilution.
Perform heat mediated antigen retrieval with Tris-EDTA buffer pH 9.0



Immunofluorescence-Anti-FUNDC1 pAb

Immunofluorescence analysis of paraffin-embedded rat stomach using anti-FUNDC1 Rabbit Antibody at 1:100 dilution.
Perform heat mediated antigen retrieval with Tris-EDTA buffer pH 9.0