

Anti-MEK1/2 Rabbit pAb



WL03328

For Research Use Only. Not For Use In Diagnostic Procedures

Product Information

Product name	Anti-MEK1/2 Rabbit pAb	
Source	Rabbit	
Species reactivity	Human, Mouse, Rat	
Tested applications	WB	1:500-1:1000
	IHC	1:100-1:400
Cellular localization	Cytoplasm, Cytoskeleton, Nucleus. Membrane	
Pack size	50/100/200/500/1000μl	
Storage	Store at -20°C. Avoid freeze/thaw cycles.	
Storage buffer	Supplied in 20 mM phosphate (pH 7.5), 150 mM NaCl, 100 μg/ml	
	BSA, 50% glycerol and less than 0.02% sodium azide	

General Information

Background	A family of protein kinases located upstream of the MAP kinases and responsible for their activation has been identified. The prototype member of this family, designated MAP kinase kinase, or MEK1, specifically phosphorylates the MAP kinase regulatory threonine and tyrosine residues present in the Thr-Glu-Tyr motif of ERK. A second MEK family member, MEK2, resembles MEK1 in its substrate specificity. MEK3 (or MKK3) functions to activate p38 MAP kinase, and MEK4 (also called SEK1 or MKK4) activates both p38 and JNK MAP kinases. MEK5 appears to specifically phosphorylate ERK5, whereas MEK6 phosphorylates p38 and p38b. MEK7 (or MKK7) phosphorylates and activates the JNK signal transduction pathway.
Immunogen	Polyclonal antibody is produced by immunizing animals with a synthetic peptide of MEK1/2.
Purification	Polyclonal antibody was purified by immunogen affinity chromatography.

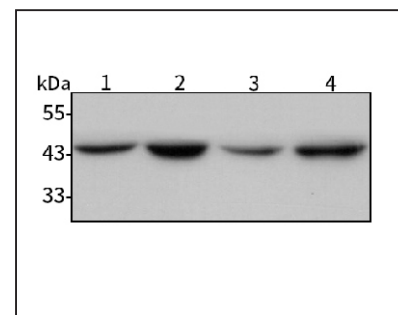
Anti-MEK1/2 Rabbit pAb



WL03328

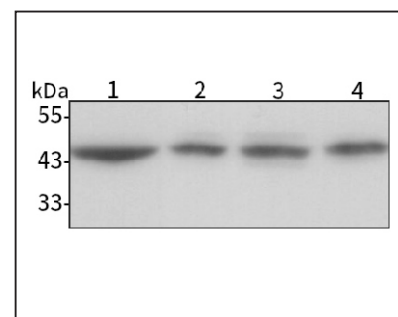
For Research Use Only. Not For Use In Diagnostic Procedures

Product Images



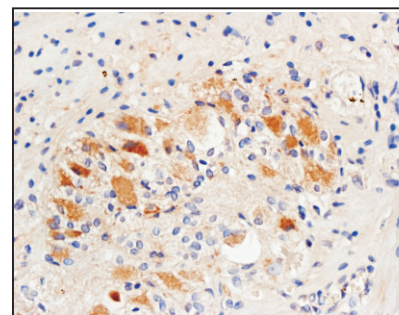
Western blot-Anti-MEK1/2 pAb

Lane 1: Human HepG2 cell lysate
 Lane 2: Human MCF-7 cell lysate
 Lane 3: Human Hela cell lysate
 Lane 4: Human A549 cell lysate
 All lanes: Anti-MEK1/2 at 1:1000 dilution
 Lysates/proteins at 20-50 μg per lane.
 Predicted band size: 44 kDa
 Observed band size: 44 kDa



Western blot-Anti-MEK1/2 pAb

Lane 1: Mouse kidney tissue lysate
 Lane 2: Mouse heart tissue lysate
 Lane 3: Rat lung tissue lysate
 Lane 4: Rat stomach tissue lysate
 All lanes: Anti-MEK1/2 at 1:1000 dilution
 Lysates/proteins at 20-50 μg per lane.
 Predicted band size: 44 kDa
 Observed band size: 44 kDa



Immunohistochemistry-Anti-MEK1/2 pAb

Immunohistochemical analysis of paraffin-embedded human colon cancer using anti-MEK1/2 Rabbit Antibody at 1:250 dilution.
 Perform heat mediated antigen retrieval with Tris-EDTA buffer pH 9.0

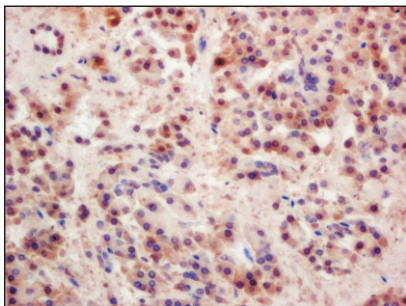
Anti-MEK1/2 Rabbit pAb



WL03328

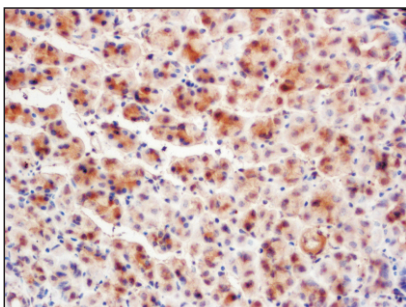
For Research Use Only. Not For Use In Diagnostic Procedures

Product Images



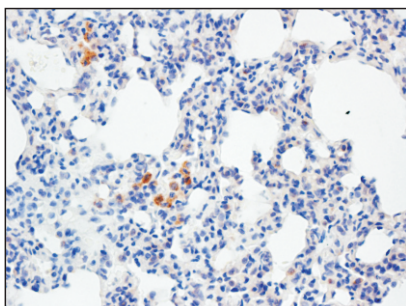
Immunohistochemistry-Anti-MEK1/2 pAb

Immunohistochemical analysis of paraffin-embedded human pancreatic cancer using anti-MEK1/2 Rabbit Antibody at 1:200 dilution.
Perform heat mediated antigen retrieval with Tris-EDTA buffer pH 9.0



Immunohistochemistry-Anti-MEK1/2 pAb

Immunohistochemical analysis of paraffin-embedded rat stomach using anti-MEK1/2 Rabbit Antibody at 1:100 dilution.
Perform heat mediated antigen retrieval with Tris-EDTA buffer pH 9.0



Immunohistochemistry-Anti-MEK1/2 pAb

Immunohistochemical analysis of paraffin-embedded rat lung using anti-MEK1/2 Rabbit Antibody at 1:250 dilution.
Perform heat mediated antigen retrieval with Tris-EDTA buffer pH 9.0