

## Anti-P-P70 S6 Kinase beta (S370) Rabbit pAb

Wanleibio



WL04213

For Research Use Only. Not For Use In Diagnostic Procedures

## Product Information

<b>Product name</b>	Anti-P-P70 S6 Kinase beta (S370) Rabbit pAb	
<b>Source</b>	Rabbit	
<b>Species reactivity</b>	Human, Mouse, Rat	
<b>Tested applications</b>	WB	1:500-1:1000
	IHC, IF	1:100-1:200
<b>Cellular localization</b>	Cytoplasm. Nucleus.	
<b>Pack size</b>	50/100/200/500/1000µl	
<b>Storage</b>	Store at -20°C. <b>Avoid freeze/thaw cycles.</b>	
<b>Storage buffer</b>	Supplied in 20 mM phosphate (pH 7.5), 150 mM NaCl, 100 µg/ml	
	BSA, 50% glycerol and less than 0.02% sodium azide	

## General Information

<b>Background</b>	p70 S6 kinase is a mitogen activated Ser/Thr protein kinase that is required for cell growth and G1 cell cycle progression. p70 S6 kinase phosphorylates the S6 protein of the 40S ribosomal subunit and is involved in translational control of 5' oligopyrimidine tract mRNAs. A second isoform, p85 S6 kinase, is derived from the same gene and is identical to p70 S6 kinase except for 23 extra residues at the amino terminus, which encode a nuclear localizing signal. Both isoforms lie on a mitogen activated signaling pathway downstream of phosphoinositide-3 kinase (PI-3K) and the target of rapamycin, FRAP/mTOR, a pathway distinct from the Ras/MAP kinase cascade.
<b>Immunogen</b>	Polyclonal antibody is produced by immunizing animals with a synthetic peptide of P-P70 S6 Kinase beat (S370).
<b>Purification</b>	Polyclonal antibody was purified by immunogen affinity chromatography.

## Anti-P-P70 S6 Kinase beta (S370) Rabbit pAb

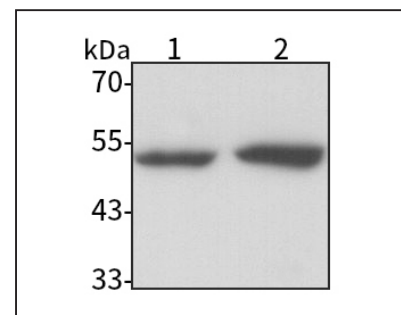
Wanleibio



WL04213

For Research Use Only. Not For Use In Diagnostic Procedures

## Product Images



Western blot-Anti-P-P70 S6 Kinase beta (S370) pAb

Lane 1: Human Hela cell lysate

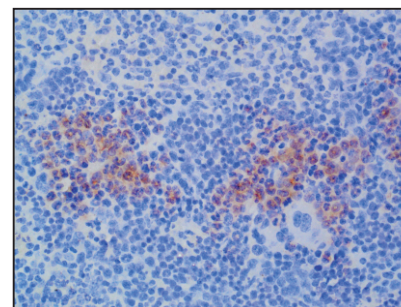
Lane 2: Human HEK293 cell lysate

All lanes: Anti-P- P70 S6 Kinase beta (S370) at 1:1000 dilution

Lysates/proteins at 20-50 µg per lane.

Predicted band size: 53 kDa

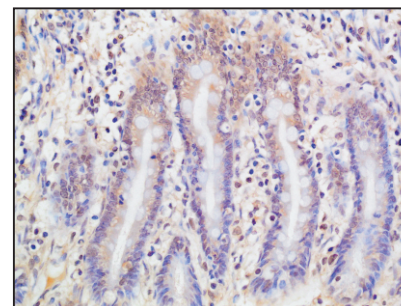
Observed band size: 53 kDa



Immunohistochemistry-Anti-P- P70 S6 Kinase beta (S370) pAb

Immunohistochemical analysis of paraffin-embedded mouse spleen using anti-P- P70 S6 Kinase beta (S370) Rabbit Antibody at 1:100 dilution.

Perform heat mediated antigen retrieval with Tris-EDTA buffer pH 9.0



Immunohistochemistry-Anti-P- P70 S6 Kinase beta (S370) pAb

Immunohistochemical analysis of paraffin-embedded rat intestine using anti-P- P70 S6 Kinase beta (S370) Rabbit Antibody at 1:100 dilution.

Perform heat mediated antigen retrieval with Tris-EDTA buffer pH 9.0

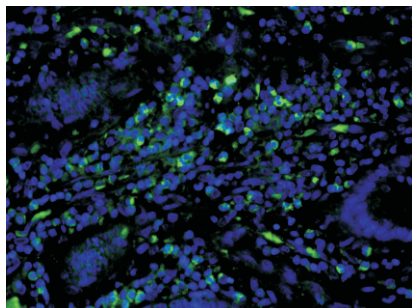
# Anti-P-P70 S6 Kinase beta (S370) Rabbit pAb



WL04213

For Research Use Only. Not For Use In Diagnostic Procedures

## Product Information



### Immunofluorescence-Anti-P- P70 S6 Kinase beta (S370) pAb

Immunofluorescence analysis of paraffin-embedded human colon cancer using anti-P- P70 S6 Kinase beta (S370) Rabbit Antibody at 1:100 dilution. Perform heat mediated antigen retrieval with Tris-EDTA buffer pH 9.0