

Anti-BRG1 Rabbit pAb



WL03997

For Research Use Only. Not For Use In Diagnostic Procedures

Product Information

Product name	Anti-BRG1 Rabbit pAb	
Source	Rabbit	
Species reactivity	Human, Mouse, Rat	
Tested applications	WB	1:1000-1:2000
	IHC	1:500
Cellular localization	Nucleus	
Pack size	50/100/200/500/1000μl	
Storage	Store at -20°C. Avoid freeze/thaw cycles.	
Storage buffer	Supplied in 20 mM phosphate (pH 7.5), 150 mM NaCl, 100 μg/ml	
	BSA, 50% glycerol and less than 0.02% sodium azide	

General Information

Background	BRG1 is a member of the SWI/SNF family of proteins and is similar to the brahma protein of Drosophila. Members of this family have helicase and ATPase activities and are thought to regulate transcription of certain genes by altering the chromatin structure around those genes. BRG1 is part of the large ATP-dependent chromatin remodeling complex SNF/SWI, which is required for transcriptional activation of genes normally repressed by chromatin. BRG1 plays a vital role in the regulation of gene transcription during early mammalian embryogenesis. In addition, BRG1 also play a role as a tumor suppressors and BRG1 is mutated in several tumor cell lines.
Immunogen	Polyclonal antibody is produced by immunizing animals with a synthetic peptide of BRG1.
Purification	Polyclonal antibody was purified by Protein A affinity chromatography.

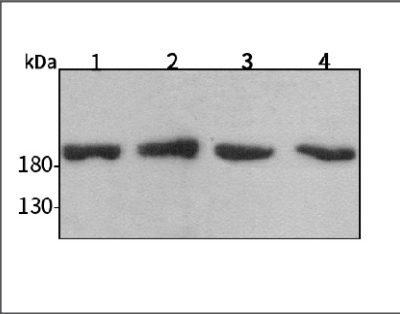
Anti-BRG1 Rabbit pAb



WL03997

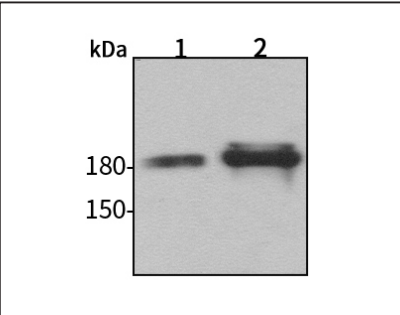
For Research Use Only. Not For Use In Diagnostic Procedures

Product Images



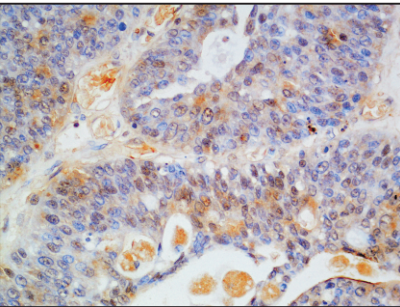
Western blot-Anti-BRG1 pAb

Lane 1: Human Hela cell lysate
Lane 2: Human MCF-7 cell lysate
Lane 3: Human HEK-293 cell lysate
Lane 4: Human SW480 cell lysate
All lanes: Anti-BRG1 at 1:1000 dilution
Lysates/proteins at 20-50 μg per lane.
Predicted band size: 185 kDa
Observed band size: 185 kDa



Western blot-Anti-BRG1 pAb

Lane 1: Mouse kidney tissue lysate
Lane 2: Rat colon tissue lysate
All lanes: Anti-BRG1 at 1:1000 dilution
Lysates/proteins at 20-50 μg per lane.
Predicted band size: 185 kDa
Observed band size: 185 kDa



Immunohistochemistry-Anti-BRG1 pAb

Immunohistochemical analysis of paraffin-embedded human bladder cancer using anti-BRG1 Rabbit Antibody at 1:500 dilution.
Perform heat mediated antigen retrieval with Tris-EDTA buffer pH 9.0

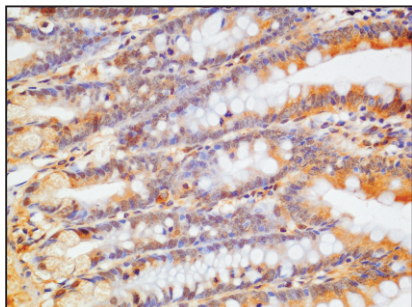
Anti-BRG1 Rabbit pAb



WL03997

For Research Use Only. Not For Use In Diagnostic Procedures

Product Information



Immunohistochemistry-Anti-BRG1 pAb

Immunohistochemical analysis of paraffin-embedded rat colon using anti-BRG1 Rabbit Antibody at 1:500 dilution.

Perform heat mediated antigen retrieval with Tris-EDTA buffer pH 9.0