

Anti-Calcineurin B Rabbit pAb



WL02676

For Research Use Only. Not For Use In Diagnostic Procedures

Product Information

Product name	Anti-Calcineurin B Rabbit pAb
Source	Rabbit
Species reactivity	Human, Mouse, Rat
Tested applications	Western blot 1:1000-1:2000

**Suggested working dilutions are given as a guide only. It is recommended that the user titrates the product for use in their own experiment using appropriate negative and positive controls.*

Molecular Wt.	19 kDa
Pack size	50/100/200/500/1000μl
Storage	Store at -20°C. Avoid freeze/thaw cycles.
Storage buffer	Supplied in 20 mM phosphate (pH 7.5), 150 mM NaCl, 100 μg/ml BSA, 50% glycerol and less than 0.02% sodium azide

General Information

Background

Calcineurin, also known as protein phosphatase 2B (PP2B), is a calmodulin-dependent, calcium-activated, serine/threonine protein phosphatase composed of a catalytic subunit (calcineurin A) and a tightly bound regulatory subunit (calcineurin B). Calcineurin B, like calmodulin, contains four EF-hand, calcium-binding motifs. An additional protein phosphatase catalytic subunit, PPX (also known as PP4), is a putative member of a novel PP family. The PP2B family comprises subfamily members PP2B-A α , PP2B-A β and PP2B-A γ . Two additional regulatory subunits been identified, designated PP2B-B1 and PP2B-B2.

Immunogen

Polyclonal antibody is produced by immunizing animals with a synthetic peptide of Calcineurin B.

Purification

Polyclonal antibody was purified by Protein A affinity chromatography.

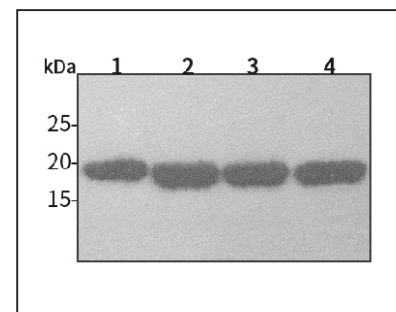
Anti-Calcineurin B Rabbit pAb



WL02676

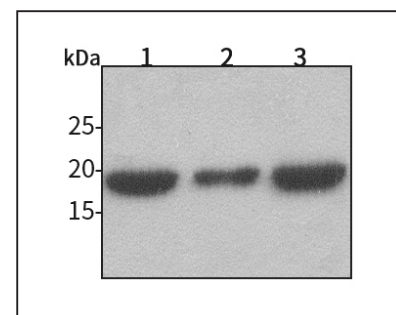
For Research Use Only. Not For Use In Diagnostic Procedures

Product Images



Western blot-Anti-Calcineurin B pAb

Lane 1: Human SGC-7901 cell lysate 30μg
 Lane 2: Human MCF-7 cell lysate 30μg
 Lane 3: Human HEK-293 cell lysate 30μg
 Lane 4: Human THP-1 cell lysate 30μg
 Separation gel: 15% polyacrylamide
 Electrophoresis: 100V, 4°C, 3h
 Transmembrane: 100V, 4°C, 1h
 Blocking: 5% w/v nonfat dry milk, 1 × TBST, at RT with gentle shaking
 Primary antibody: 1:1000 in blocking buffer, 4°C, overnight
 Secondary antibody (WLA023a) : 1:5000-1:10000, 45min



Western blot-Anti-Calcineurin B pAb

Lane 1: Mouse kidney tissue lysate 30μg
 Lane 2: Mouse heart tissue lysate 30μg
 Lane 3: Rat colon tissue lysate 30μg
 Separation gel: 15% polyacrylamide
 Electrophoresis: 100V, 4°C, 3h
 Transmembrane: 100V, 4°C, 1h
 Blocking: 5% w/v nonfat dry milk, 1 × TBST, at RT with gentle shaking
 Primary antibody: 1:1000 in blocking buffer, 4°C, overnight
 Secondary antibody (WLA023a) : 1:5000-1:10000, 45min
 Detection: ECL, 30s-2min