

Anti-CDK6 Rabbit pAb



WL03460

For Research Use Only. Not For Use In Diagnostic Procedures

Product Information

Product name	Anti-CDK6 Rabbit pAb	
Source	Rabbit	
Species reactivity	Human, Mouse, Rat	
Tested applications	WB	1:500-1:1000
	IHC	1:200
	IF	1:200
Cellular localization	Cell projection. Cytoplasm. Cytoskeleton. Nucleus.	
Pack size	50/100/200/500/1000µl	
Storage	Store at -20°C. Avoid freeze/thaw cycles.	
Storage buffer	Supplied in 20 mM phosphate (pH 7.5), 150 mM NaCl, 100 µg/ml	
	BSA, 50% glycerol and less than 0.02% sodium azide	

General Information

Background	The cyclin-dependent kinases form complexes with their cyclin partners and with CDK inhibitors. CDK6 and CDK4 associate with the D-type cyclins and target the retinoblastoma protein, allowing passage through the G1/S phase restriction point. In cervical cancer cells, CDK6 function has been shown to be altered indirectly by the p16 inhibitor. CDK6 is also overexpressed in tumors that exhibit drug resistance, for example glioma malignancies exhibit resistance to chemotherapy using temozolomide (TMZ) when they have a mutation overexpressing CDK6.
Immunogen	Polyclonal antibody is produced by immunizing animals with a synthetic peptide of CDK6.
Purification	Polyclonal antibody was purified by immunogen affinity chromatography.

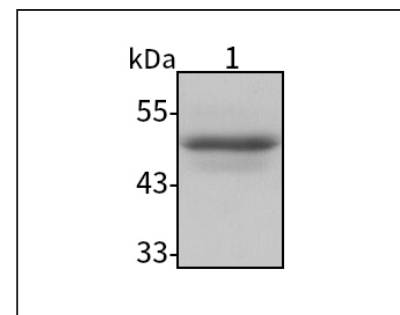
Anti-CDK6 Rabbit pAb



WL03460

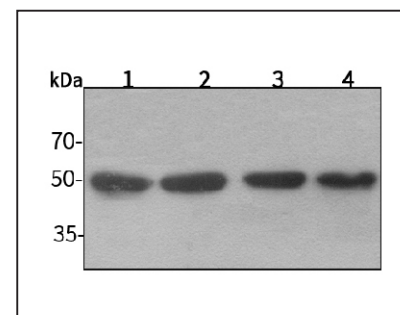
For Research Use Only. Not For Use In Diagnostic Procedures

Product Images



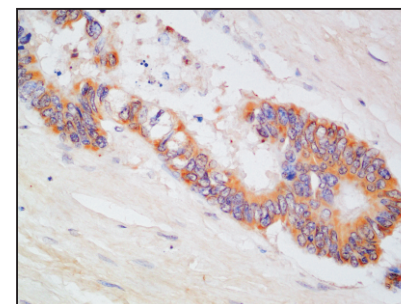
Western blot-Anti-CDK6 pAb

Lane 1: Human Jurkat cell lysate
 All lanes: Anti-CDK6 at 1:1000 dilution
 Lysates/proteins at 20-50 µg per lane.
 Predicted band size: 37 kDa
 Observed band size: 50 kDa



Western blot-Anti-CDK6 pAb

Lane 1: Mouse heart tissue lysate
 Lane 2: Mouse kidney tissue lysate
 Lane 3: Rat liver tissue lysate
 Lane 4: Rat kidney tissue lysate
 All lanes: Anti-CDK6 at 1:1000 dilution
 Lysates/proteins at 20-50 µg per lane.
 Predicted band size: 37 kDa
 Observed band size: 50 kDa



Immunohistochemistry-Anti-CDK6 pAb

Immunohistochemical analysis of paraffin-embedded human rectum cancer using anti-CDK6 Rabbit Antibody at 1:200 dilution.
 Perform heat mediated antigen retrieval with Tris-EDTA buffer pH 9.0

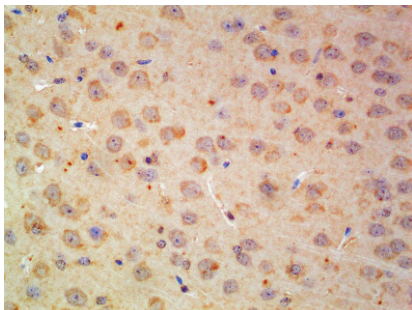
Anti-CDK6 Rabbit pAb



WL03460

For Research Use Only. Not For Use In Diagnostic Procedures

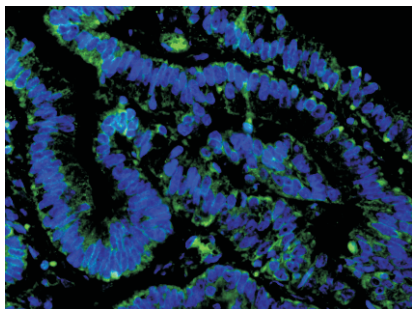
Product Information



Immunohistochemistry-Anti-CDK6 pAb

Immunohistochemical analysis of paraffin-embedded mouse brain using anti-CDK6 Rabbit Antibody at 1:200 dilution.

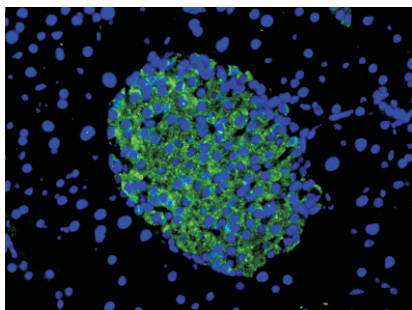
Perform heat mediated antigen retrieval with Tris-EDTA buffer pH 9.0



Immunofluorescence-Anti-CDK6 pAb

Immunofluorescence analysis of paraffin-embedded human colon using anti-CDK6 Rabbit Antibody at 1:200 dilution.

Perform heat mediated antigen retrieval with Tris-EDTA buffer pH 9.0



Immunofluorescence-Anti-CDK6 pAb

Immunofluorescence analysis of paraffin-embedded mouse pancreas using anti-CDK6 Rabbit Antibody at 1:200 dilution.

Perform heat mediated antigen retrieval with Tris-EDTA buffer pH 9.0