

Anti-cPLA2 Rabbit pAb



WL01612

For Research Use Only. Not For Use In Diagnostic Procedures

Product Information

| | | |
|------------------------------|--|--------------|
| Product name | Anti-cPLA2 Rabbit pAb | |
| Source | Rabbit | |
| Species reactivity | Human | |
| Tested applications | WB | 1:500-1:1000 |
| | IHC | 1:200 |
| | IF | 1:200 |
| Cellular localization | Cytoplasm. Cytoplasmic vesicle | |
| Pack size | 50/100/200/500/1000μl | |
| Storage | Store at -20°C. Avoid freeze/thaw cycles. | |
| Storage buffer | Supplied in 20 mM phosphate (pH 7.5), 150 mM NaCl, 100 μg/ml | |
| | BSA, 50% glycerol and less than 0.02% sodium azide | |

General Information

| | |
|---------------------|---|
| Background | Phospholipase A2s (PLA2s) constitute a family of esterases that hydrolyze the sn-2-acyl ester bond in glycerophospholipid molecules. These enzymes are generally calcium-dependent and have been found both intra- and extracellularly. PLA2s include both the relatively low molecular weight type I and type II enzymes and the form known as cytoplasmic PLA2 (cPLA2). cPLA2 is present in the cytosol of various cells and tissues including platelets, macrophages and monoblasts; and preferentially hydrolyzes the sn-2 position of phospholipid molecules, releasing free arachidonate. The hydrolysis reaction also produces lysophospholipids that are converted into platelet-activating factor. |
| Immunogen | Polyclonal antibody is produced by immunizing animals with a synthetic peptide of cPLA2. |
| Purification | Polyclonal antibody was purified by immunogen affinity chromatography. |

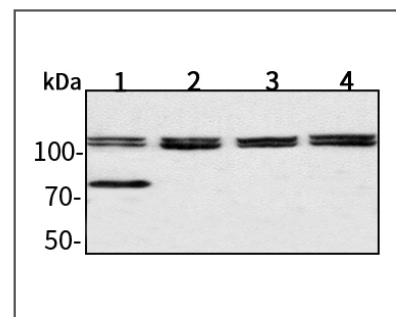
Anti-cPLA2 Rabbit pAb



WL01612

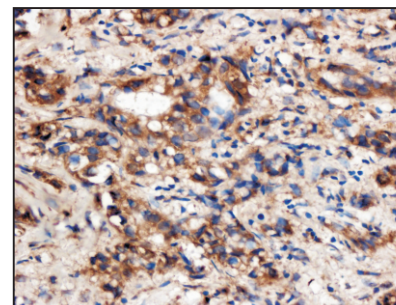
For Research Use Only. Not For Use In Diagnostic Procedures

Product Images



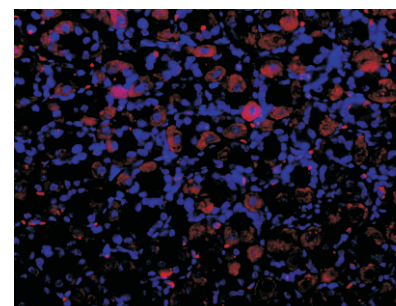
Western blot-Anti-cPLA2 pAb

Lane 1: Human HepG2 cell lysate
 Lane 2: Human Hela cell lysate
 Lane 3: Human BGC-823 cell lysate
 Lane 4: Human MGC-803 cell lysate
 All lanes: Anti-cPLA2 at 1:1000 dilution
 Lysates/proteins at 20-50 μg per lane.
 Predicted band size: 85 kDa
 Observed band size: 100 kDa



Immunohistochemistry-Anti-cPLA2 pAb

Immunohistochemical analysis of paraffin-embedded human breast cancer using anti-cPLA2 Rabbit Antibody at 1:200 dilution.
 Perform heat mediated antigen retrieval with Tris-EDTA buffer pH 9.0



Immunofluorescence-Anti-cPLA2 pAb

Immunofluorescence analysis of paraffin-embedded mouse stomach using anti-cPLA2 Rabbit Antibody at 1:200 dilution.
 Perform heat mediated antigen retrieval with Tris-EDTA buffer pH 9.0

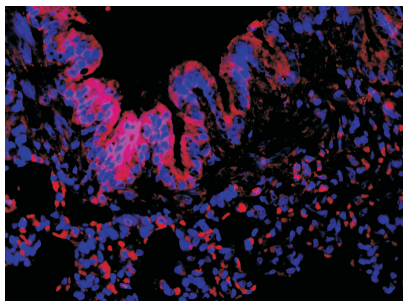
Anti-cPLA2 Rabbit pAb



WL01612

For Research Use Only. Not For Use In Diagnostic Procedures

Product Information



Immunofluorescence-Anti-cPLA2 pAb

Immunofluorescence analysis of paraffin-embedded rat lung using anti-cPLA2 Rabbit Antibody at 1:200 dilution.

Perform heat mediated antigen retrieval with Tris-EDTA buffer pH 9.0