

Anti-APG5L/ATG5 Rabbit pAb



WL02411

For Research Use Only. Not For Use In Diagnostic Procedures

Product Information

| | |
|------------------------------|---|
| Product name | Anti-APG5L/ATG5 Rabbit pAb |
| Source | Rabbit |
| Species reactivity | Human, Mouse, Rat |
| Tested applications | WB 1:1000-1:2000 IHC 1:100-1:400 IF 1:100-1:400 |
| Cellular localization | Cytoplasm. Preautophagosomal structure membrane |
| Pack size | 50/100/200/500/1000µl |
| Storage | Store at -20°C. Avoid freeze/thaw cycles. |
| Storage buffer | Supplied in 20 mM phosphate (pH 7.5), 150 mM NaCl, 100 µg/ml BSA, 50% glycerol and less than 0.02% sodium azide |

General Information

Background

Autophagy is generally activated by conditions of nutrient deprivation but has also been associated with a number of physiological processes including development, differentiation, neurodegeneration, infection, and cancer. Formation of the autophagosome involves a ubiquitin-like conjugation system in which Atg12 is covalently bound to Atg5 and targeted to autophagosome vesicles. This conjugation reaction is mediated by the ubiquitin E1-like enzyme Atg7 and the E2-like enzyme Atg10. Apg5 and the human homolog, APG5 (also designated apoptosis-specific protein or APS), function as substrates for the autophagy protein Apg12. These proteins are covalently bonded together to form Apg12/APG5 conjugates, which are required for the progression of autophagy.

Immunogen

Polyclonal antibody is produced by immunizing animals with a synthetic peptide of APG5L/ATG5.

Purification

Polyclonal antibody was purified by Protein A affinity chromatography.

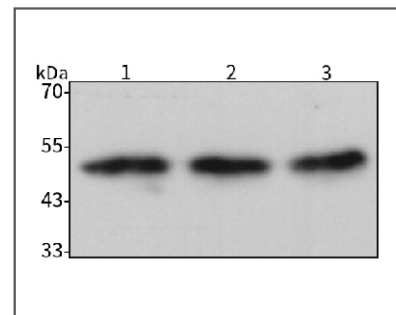
Anti-APG5L/ATG5 Rabbit pAb



WL02411

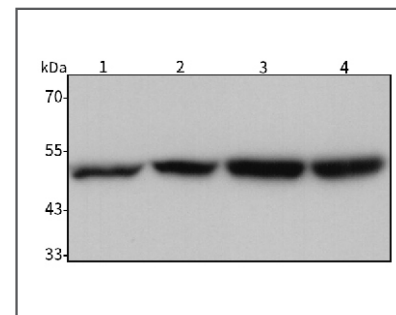
For Research Use Only. Not For Use In Diagnostic Procedures

Product Images



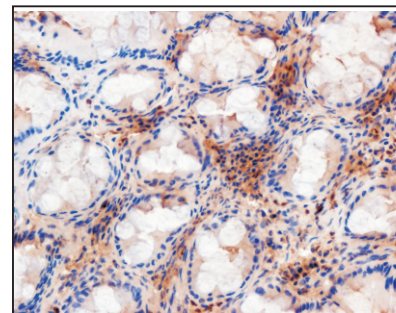
Western blot-Anti-APG5L/ATG5 pAb

Lane 1: Human Raji cell lysate
Lane 2: Human THP-1 cell lysate
Lane 3: Human Hela cell lysate
All lanes: Anti-APG5L/ATG5 at 1:1000 dilution
Lysates/proteins at 20-50 µg per lane.
Predicted band size: 32kDa
Observed band size: 50kDa



Western blot-Anti-APG5L/ATG5 pAb

Lane 1: Mouse kidney tissue lysate
Lane 2: Mouse lung tissue lysate
Lane 3: Rat colon tissue lysate
Lane 4: Rat stomach tissue lysate
All lanes: Anti-APG5L/ATG5 at 1:1000 dilution
Lysates/proteins at 20-50 µg per lane.
Predicted band size: 32kDa
Observed band size: 50kDa



Immunohistochemistry-Anti-APG5L/ATG5 pAb

Immunohistochemical analysis of paraffin-embedded human colon cancer using anti-APG5L/ATG5 Rabbit Antibody at 1:150 dilution.
Perform heat mediated antigen retrieval with Tris-EDTA buffer pH 9.0

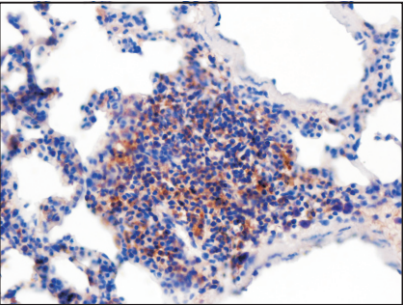
Anti-APG5L/ATG5 Rabbit pAb



WL02411

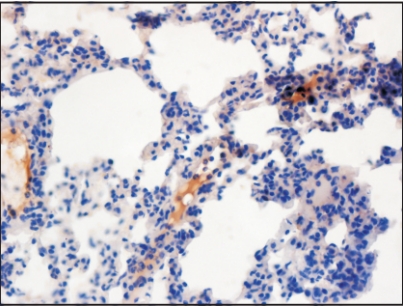
For Research Use Only. Not For Use In Diagnostic Procedures

Product Images



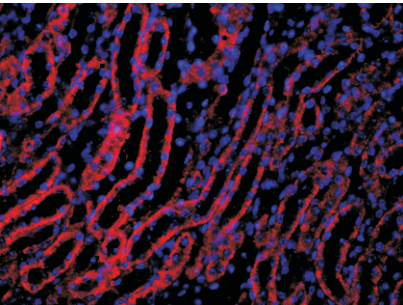
Immunohistochemistry-Anti-APG5L/ATG5 pAb

Immunohistochemical analysis of paraffin-embedded rat lung using anti-APG5L/ATG5 Rabbit Antibody at 1:150 dilution.
Perform heat mediated antigen retrieval with Tris-EDTA buffer pH 9.0



Immunohistochemistry-Anti-APG5L/ATG5 pAb

Immunohistochemical analysis of paraffin-embedded mouse lung using anti-APG5L/ATG5 Rabbit Antibody at 1:150 dilution.
Perform heat mediated antigen retrieval with Tris-EDTA buffer pH 9.0



Immunofluorescence-Anti-APG5L/ATG5 pAb

Immunofluorescence analysis of paraffin-embedded mouse kidney using anti-APG5L/ATG5 Rabbit Antibody at 1:200 dilution.
Perform heat mediated antigen retrieval with Tris-EDTA buffer pH 9.0

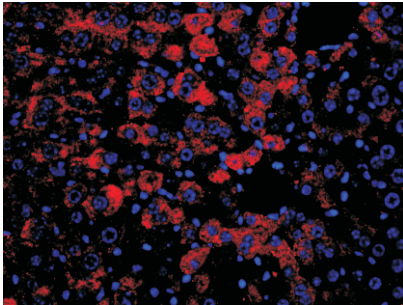
Anti-APG5L/ATG5 Rabbit pAb



WL02411

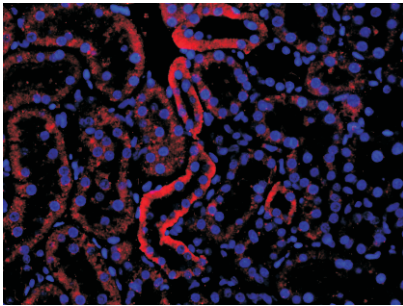
For Research Use Only. Not For Use In Diagnostic Procedures

Product Images



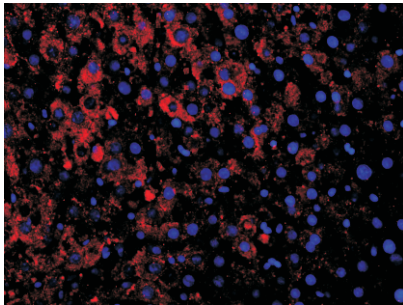
Immunofluorescence-Anti-APG5L/ATG5 pAb

Immunofluorescence analysis of paraffin-embedded mouse liver using anti-APG5L/ATG5 Rabbit Antibody at 1:200 dilution.
Perform heat mediated antigen retrieval with Tris-EDTA buffer pH 9.0



Immunofluorescence-Anti-APG5L/ATG5 pAb

Immunofluorescence analysis of paraffin-embedded rat kidney using anti-APG5L/ATG5 Rabbit Antibody at 1:200 dilution.
Perform heat mediated antigen retrieval with Tris-EDTA buffer pH 9.0



Immunofluorescence-Anti-APG5L/ATG5 pAb

Immunofluorescence analysis of paraffin-embedded rat liver using anti-APG5L/ATG5 Rabbit Antibody at 1:200 dilution.
Perform heat mediated antigen retrieval with Tris-EDTA buffer pH 9.0