

## Anti-MMP2 Rabbit pAb



WL03224

For Research Use Only. Not For Use In Diagnostic Procedures

## Product Information

<b>Product name</b>	Anti-MMP2 Rabbit pAb	
<b>Source</b>	Rabbit	
<b>Species reactivity</b>	Human, Mouse, Rat	
<b>Tested applications</b>	WB	1:1000-1:2000
	IHC	1:100-1:400
	IF	1:500
<b>Cellular localization</b>	Secreted. Membrane. Nucleus	
<b>Pack size</b>	50/100/200/500/1000µl	
<b>Storage</b>	Store at -20°C. <b>Avoid freeze/thaw cycles.</b>	
<b>Storage buffer</b>	Supplied in 20 mM phosphate (pH 7.5), 150 mM NaCl, 100 µg/ml	
	BSA, 50% glycerol and less than 0.02% sodium azide	

## Background

Proteins of the matrix metalloproteinase (MMP) family are involved in the breakdown of extracellular matrix in normal physiological processes, such as embryonic development, reproduction, and tissue remodeling, as well as in disease processes, such as arthritis and metastasis. Most MMP's are secreted as inactive proproteins which are activated when cleaved by extracellular proteinases. This gene encodes an enzyme which degrades type IV collagen, the major structural component of basement membranes. The enzyme plays a role in endometrial menstrual breakdown, regulation of vascularization and the inflammatory response. Mutations in this gene have been associated with Winchester syndrome and Nodulosis-Arthropathy-Osteolysis (NAO) syndrome.

## Immunogen

Polyclonal antibody is produced by immunizing animals with recombinant protein of MMP2.

## Purification

Polyclonal antibody was purified by protein A affinity chromatography.

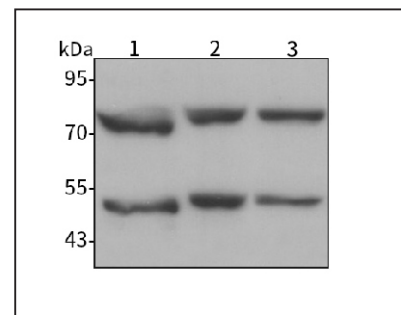
## Anti-MMP2 Rabbit pAb



WL03224

For Research Use Only. Not For Use In Diagnostic Procedures

## Product Images



## Western blot-Anti-MMP2 pAb

Lane 1: Human HepG2 cell lysate

Lane 2: Human U87-MG cell lysate

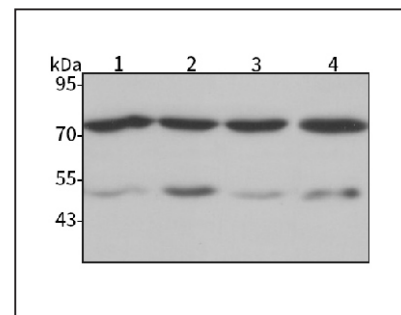
Lane 3: Human Huh-7 cell lysate

All lanes: Anti-MMP2 at 1:1000 dilution

Lysates/proteins at 20-50 µg per lane.

Predicted band size: 72 kDa

Observed band size: 50/72 kDa



## Western blot-Anti-MMP2 pAb

Lane 1: Mouse kidney tissue lysate

Lane 2: Mouse heart tissue lysate

Lane 3: Rat kidney tissue lysate

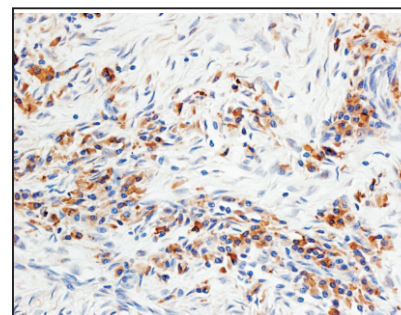
Lane 4: Rat heart tissue lysate

All lanes: Anti-MMP2 at 1:1000 dilution

Lysates/proteins at 20-50 µg per lane.

Predicted band size: 72 kDa

Observed band size: 50/72 kDa



## Immunohistochemistry-Anti-MMP2 pAb

Immunohistochemical analysis of paraffin-embedded human colon cancer using anti-MMP2 Rabbit Antibody at 1:150 dilution.

Perform heat mediated antigen retrieval with Tris-EDTA buffer pH 9.0

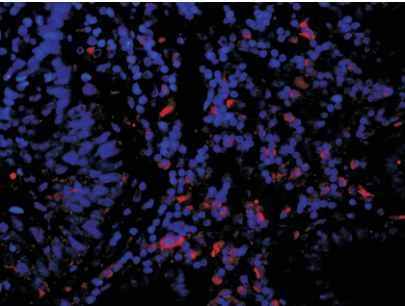
# Anti-MMP2 Rabbit pAb



For Research Use Only. Not For Use In Diagnostic Procedures

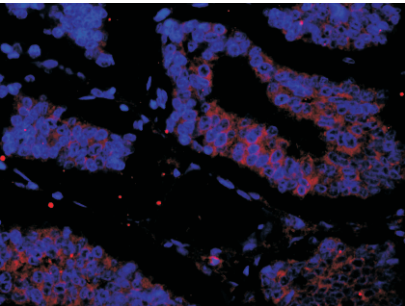
WL03224

## Product Information



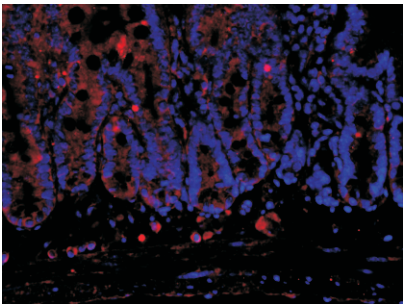
### Immunofluorescence-Anti-MMP2 pAb

Immunofluorescence analysis of paraffin-embedded human colon cancer using anti-MMP2 Rabbit Antibody at 1:500 dilution.  
Perform heat mediated antigen retrieval with Tris-EDTA buffer pH 9.0



### Immunofluorescence-Anti-MMP2 pAb

Immunofluorescence analysis of paraffin-embedded human breast cancer using anti-MMP2 Rabbit Antibody at 1:500 dilution.  
Perform heat mediated antigen retrieval with Tris-EDTA buffer pH 9.0



### Immunofluorescence-Anti-MMP2 pAb

Immunofluorescence analysis of paraffin-embedded mouse colon using anti-MMP2 Rabbit Antibody at 1:500 dilution.  
Perform heat mediated antigen retrieval with Tris-EDTA buffer pH 9.0