

## Anti-Mammaglobin A Rabbit pAb



WL04771

For Research Use Only. Not For Use In Diagnostic Procedures

## Product Information

Product name	Anti-Mammaglobin A Rabbit pAb	
Source	Rabbit	
Species reactivity	Human, Mouse, Rat	
Tested applications	WB	1:1000-1:2000
	IF	1:200-1:400
Cellular localization	Secreted	
Pack size	50/100/200/500/1000μl	
Storage	Store at -20°C. <b>Avoid freeze/thaw cycles.</b>	
Storage buffer	Supplied in 20 mM phosphate (pH 7.5), 150 mM NaCl, 100 μg/ml	
	BSA, 50% glycerol and less than 0.02% sodium azide	

## General Information

Background	SCGB2A2, also known as mammaglobin A, is a member of the secretoglobin superfamily. Predicted to be involved in androgen receptor signaling pathway. Predicted to be located in extracellular region. Predicted to be active in extracellular space.
------------	--

Immunogen	Polyclonal antibody is produced by immunizing animals with a synthetic peptide of Mammaglobin A.
-----------	--

Purification	Polyclonal antibody was purified by Protein A affinity chromatography.
--------------	--

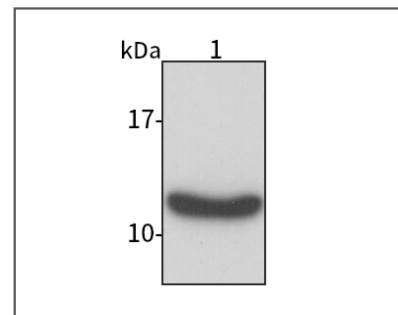
## Anti-Mammaglobin A Rabbit pAb



WL04771

For Research Use Only. Not For Use In Diagnostic Procedures

## Product Images



## Western blot-Anti-Mammaglobin A pAb

Lane 1: Human MCF-7 cell lysate  
All lanes: Anti-Mammaglobin A at 1:1000 dilution  
Lysates/proteins at 20-50 μg per lane.  
Predicted band size: 10 kDa  
Observed band size: 13 kDa