

## Anti-NP-1 Rabbit pAb



WL02783

For Research Use Only. Not For Use In Diagnostic Procedures

## Product Information

<b>Product name</b>	Anti-NP-1 Rabbit pAb	
<b>Source</b>	Rabbit	
<b>Species reactivity</b>	Human, Mouse, Rat	
<b>Tested applications</b>	WB	1:1000-1:2000
	IHC	1:100-1:400
	IF	1:500
<b>Cellular localization</b>	Cytoplasmic vesicle , secretory vesicle	
<b>Pack size</b>	50/100/200/500/1000µl	
<b>Storage</b>	Store at -20°C. <b>Avoid freeze/thaw cycles.</b>	
<b>Storage buffer</b>	Supplied in 20 mM phosphate (pH 7.5), 150 mM NaCl, 100 µg/ml	
	BSA, 50% glycerol and less than 0.02% sodium azide	

## General Information

**Background**

Nucleoside phosphorylase (NP), also designated inosine phosphorylase, forms a homotrimer. It belongs to the PNP/MTAP phosphorylase family of proteins. Nucleoside phosphorylase is an enzyme which cleaves a nucleoside by phosphorylating the ribose to produce a nucleobase and ribose 1 phosphate. It is one enzyme of the nucleotide salvage pathways. These pathways allow the cell to produce nucleotide monophosphates when the de novo synthesis pathway has been interrupted or is non-existent. Often the de novo pathway is interrupted as a result of chemotherapy drugs such as methotrexate or aminopterin.

**Immunogen**

Polyclonal antibody is produced by immunizing animals with a synthetic peptide of NP-1.

**Purification**

Polyclonal antibody was purified by Protein A affinity chromatography.

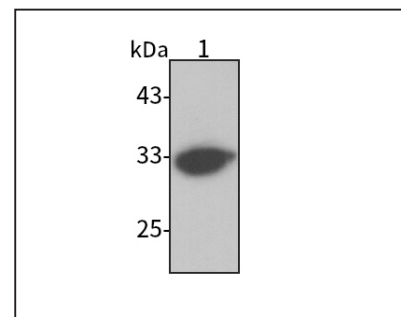
## Anti-NP-1 Rabbit pAb



WL02783

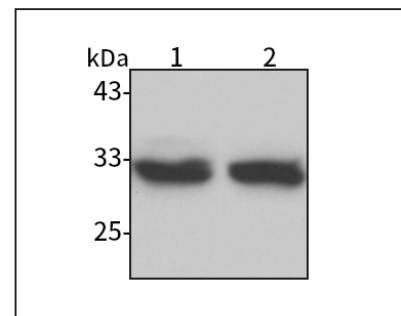
For Research Use Only. Not For Use In Diagnostic Procedures

## Product Images



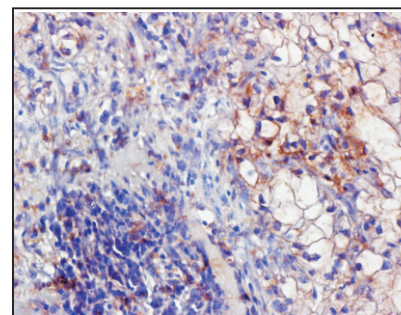
## Western blot-Anti-NP-1 pAb

Lane 1: Human Hela cell lysate  
 All lanes: Anti-NP-1 at 1:1000 dilution  
 Lysates/proteins at 20-50 µg per lane.  
 Predicted band size: 32 kDa  
 Observed band size: 32 kDa



## Western blot-Anti-NP-1 pAb

Lane 1: Mouse brain tissue lysate  
 Lane 2: Rat brain tissue lysate  
 All lanes: Anti-NP-1 at 1:1000 dilution  
 Lysates/proteins at 20-50 µg per lane.  
 Predicted band size: 32 kDa  
 Observed band size: 32 kDa



## Immunohistochemistry-Anti-NP-1 pAb

Immunohistochemical analysis of paraffin-embedded human stomach cancer using anti-NP-1 Rabbit Antibody at 1:300 dilution. Perform heat mediated antigen retrieval with Tris-EDTA buffer pH 9.0

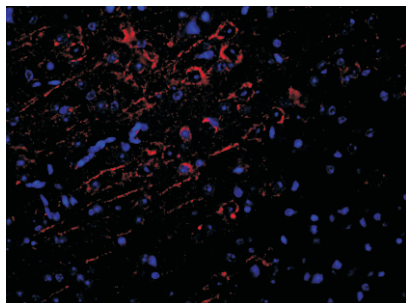
## Anti-NP-1 Rabbit pAb



WL02783

For Research Use Only. Not For Use In Diagnostic Procedures

## Product Information



### Immunofluorescence-Anti-NP-1 pAb

Immunofluorescence analysis of paraffin-embedded mouse brain using anti-NP-1 Rabbit Antibody at 1:500 dilution.

Perform heat mediated antigen retrieval with Tris-EDTA buffer pH 9.0