

## Anti-Annexin A1 Rabbit pAb



WL0040

For Research Use Only. Not For Use In Diagnostic Procedures

## Product Information

<b>Product name</b>	Anti-Annexin A1 Rabbit pAb	
<b>Source</b>	Rabbit	
<b>Species reactivity</b>	Human, Mouse, Rat	
<b>Tested applications</b>	WB	1:500-1:1000
	IHC	1:100-1:400
	IF	1:100-1:400
<b>Cellular localization</b>	Nucleus. Cytoplasm. Cell projection, cilium	
<b>Pack size</b>	50/100/200/500/1000µl	
<b>Storage</b>	Store at -20°C. <b>Avoid freeze/thaw cycles.</b>	
<b>Storage buffer</b>	Supplied in 20 mM phosphate (pH 7.5), 150 mM NaCl, 100 µg/ml	
	BSA, 50% glycerol and less than 0.02% sodium azide	

## General Information

<b>Background</b>	Annexin A1 belongs to a family of Ca(2+)-dependent phospholipid binding proteins which have a molecular weight of approximately 35,000 to 40,000 and are preferentially located on the cytosolic face of the plasma membrane. Annexin A1 protein has an apparent relative molecular mass of 40 kDa, with phospholipase A2 inhibitory activity. Since phospholipase A2 is required for the biosynthesis of the potent mediators of inflammation, prostaglandins and leukotrienes, Annexin A1 may have potential anti-inflammatory activity.
<b>Immunogen</b>	Polyclonal antibody is produced by immunizing animals with a synthetic peptide of Annexin A1.
<b>Purification</b>	Polyclonal antibody was purified by immunogen affinity chromatography.

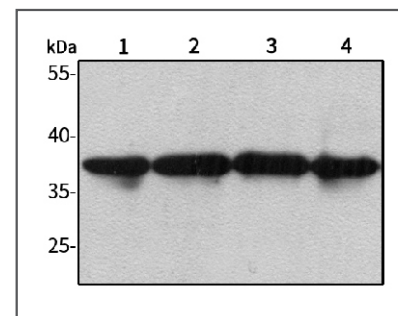
## Anti-Annexin A1 Rabbit pAb



WL0040

For Research Use Only. Not For Use In Diagnostic Procedures

## Product Images



Western blot-Anti-Annexin A1 pAb

Lane 1: Human HepG2 cell lysate

Lane 2: Human SW480 cell lysate

Lane 3: Human BGC-823 cell lysate

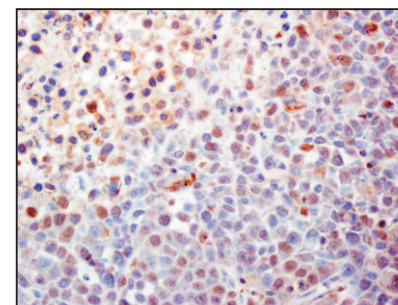
Lane 4: Human MGC-803 cell lysate

All lanes: Anti-Annexin A1 at 1:1000 dilution

Lysates/proteins at 20-50 µg per lane.

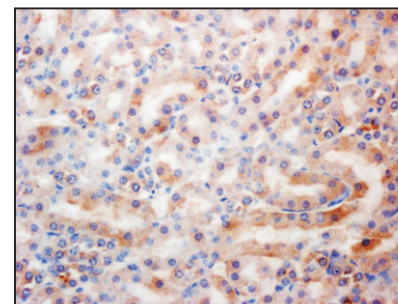
Predicted band size: 37 kDa

Observed band size: 37 kDa



Immunohistochemistry-Anti-Annexin A1 pAb

Immunohistochemical analysis of paraffin-embedded human BGC-823 cell tumorigenesis cell using anti-Annexin A1 Rabbit Antibody at 1:200 dilution. Perform heat mediated antigen retrieval with Tris-EDTA buffer pH 9.0



Immunohistochemistry-Anti-Annexin A1 pAb

Immunohistochemical analysis of paraffin-embedded mouse kidney using anti-Annexin A1 Rabbit Antibody at 1:200 dilution. Perform heat mediated antigen retrieval with Tris-EDTA buffer pH 9.0

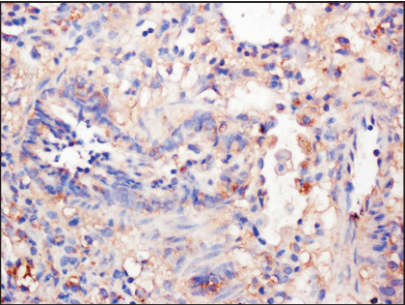
# Anti-Annexin A1 Rabbit pAb



WL0040

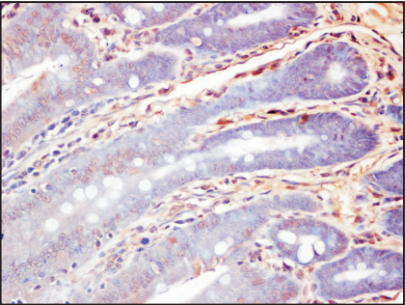
For Research Use Only. Not For Use In Diagnostic Procedures

## Product Information



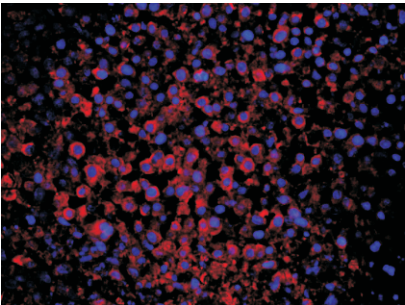
### Immunohistochemistry-Anti-Annexin A1 pAb

Immunohistochemical analysis of paraffin-embedded rat lung using anti-Annexin A1 Rabbit Antibody at 1:200 dilution.  
Perform heat mediated antigen retrieval with Tris-EDTA buffer pH 9.0



### Immunohistochemistry-Anti-Annexin A1 pAb

Immunohistochemical analysis of paraffin-embedded rat colon using anti-Annexin A1 Rabbit Antibody at 1:200 dilution.  
Perform heat mediated antigen retrieval with Tris-EDTA buffer pH 9.0



### Immunofluorescence-Anti-Annexin A1 pAb

Immunofluorescence analysis of paraffin-embedded human BGC-823 cell tumorigenesis using anti-Annexin A1 Rabbit Antibody at 1:200 dilution.  
Perform heat mediated antigen retrieval with Tris-EDTA buffer pH 9.0

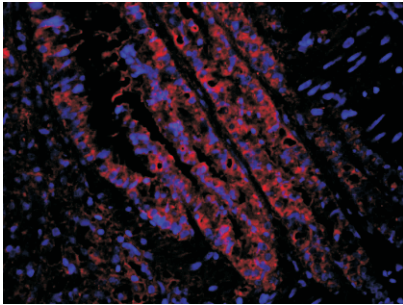
# Anti-Annexin A1 Rabbit pAb



WL0040

For Research Use Only. Not For Use In Diagnostic Procedures

## Product Images



### Immunofluorescence-Anti-Annexin A1 pAb

Immunofluorescence analysis of paraffin-embedded rat lung using anti-Annexin A1 Rabbit Antibody at 1:200 dilution.  
Perform heat mediated antigen retrieval with Tris-EDTA buffer pH 9.0