

Anti-PP2A α+β Rabbit pAb



WL05226

For Research Use Only. Not For Use In Diagnostic Procedures

Product Information

Product name	Anti-PP2A α+β Rabbit pAb		
Source	Rabbit		
Species reactivity	Human, Mouse, Rat		
Tested applications	WB	1:1000-1:2000	
	IHC, IF	1:50-1:200	
Cellular localization	Cytoplasm. Nucleus.		
Pack size	50/100/200/500/1000μl		
Storage	Store at -20°C. Avoid freeze/thaw cycles.		
Storage buffer	Supplied in 20 mM phosphate (pH 7.5), 150 mM NaCl, 100 μg/ml		
	BSA, 50% glycerol and less than 0.02% sodium azide		

General Information

Background	PP2A can regulate the activity of phosphorylase B kinase casein kinase 2, mitogen stimulated S6 kinase, and MAP-2 kinase. It collaborates with SGOL2 to protect silk adhesion proteins from enzyme mediated cleavage in oocytes, particularly during meiosis I (through similarity). It can dephosphorylate SV40 large T antigen and p53/TP53.
Immunogen	Polyclonal antibody is produced by immunizing animals with a synthetic peptide of PP2A α+β.
Purification	Polyclonal antibody was purified by Protein A affinity chromatography.

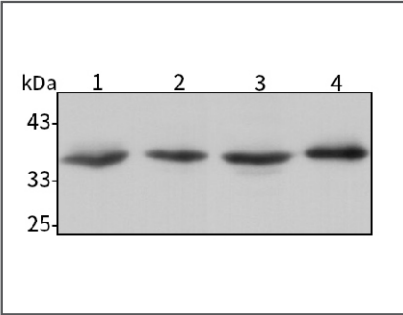
Anti-PP2A α+β Rabbit pAb



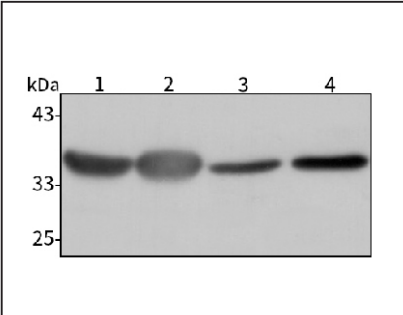
WL05226

For Research Use Only. Not For Use In Diagnostic Procedures

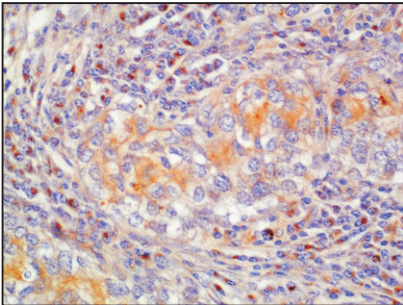
Product Images



**Western blot-Anti-PP2A α+β pAb**  
Lane 1: Human Hela cell lasate  
Lane 2: Human HEK293 cell lasate  
Lane 3: Human HCT116 cell lasate  
Lane 4: Human MDA-MB-231 cell lasate  
All lanes: Anti-PP2A α+β at 1:1000 dilution  
Lysates/proteins at 20-50 μg per lane.  
Predicted band size: 36 kDa  
Observed band size: 36 kDa



**Western blot-Anti-PP2A α+β pAb**  
Lane 1: Mouse kidney tissue lysate  
Lane 2: Mouse heart tissue lysate  
Lane 3: Rat intestine tissue lysate  
Lane 4: Rat stomach tissue lysate  
All lanes: Anti-PP2A α+β at 1:1000 dilution  
Lysates/proteins at 20-50 μg per lane.  
Predicted band size: 36 kDa  
Observed band size: 36 kDa



**Immunohistochemistry-Anti-PP2A α+β pAb**  
Immunohistochemical analysis of paraffin-embedded human breast cancer using anti-PP2A α+β Rabbit Antibody at 1:200 dilution.  
Perform heat mediated antigen retrieval with Tris-EDTA buffer pH 9.0

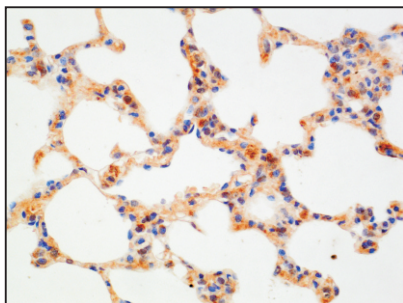
## Anti-PP2A $\alpha$ + $\beta$ Rabbit pAb



WL05226

For Research Use Only. Not For Use In Diagnostic Procedures

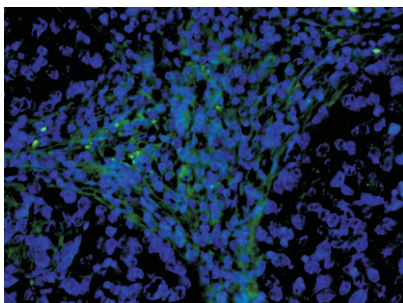
### Product Information



#### Immunohistochemistry-Anti-PP2A $\alpha$ + $\beta$ pAb

Immunohistochemical analysis of paraffin-embedded rat lung using anti-PP2A  $\alpha$ + $\beta$  Rabbit Antibody at 1:200 dilution.

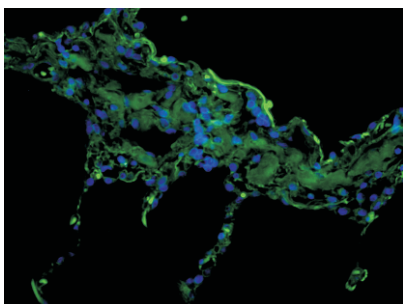
Perform heat mediated antigen retrieval with Tris-EDTA buffer pH 9.0



#### Immunofluorescence-Anti-PP2A $\alpha$ + $\beta$ pAb

Immunofluorescence analysis of paraffin-embedded human breast cancer using anti-PP2A  $\alpha$ + $\beta$  Rabbit Antibody at 1:200 dilution.

Perform heat mediated antigen retrieval with Tris-EDTA buffer pH 9.0



#### Immunofluorescence-Anti-PP2A $\alpha$ + $\beta$ pAb

Immunofluorescence analysis of paraffin-embedded human lung cancer using anti-PP2A  $\alpha$ + $\beta$  Rabbit Antibody at 1:200 dilution.

Perform heat mediated antigen retrieval with Tris-EDTA buffer pH 9.0