

Anti-Mitofusin 1/Mfn1 Rabbit pAb



WL06394

For Research Use Only. Not For Use In Diagnostic Procedures

Product Information

Product name	Anti-Mitofusin 1/Mfn1 Rabbit pAb	
Source	Rabbit	
Species reactivity	Human, Mouse, Rat	
Tested applications	WB	1:500-1:1000
	IHC	1:200
	IF	1:200
Cellular localization	Cytoplasm and Mitochondrion outer membrane	
Pack size	50/100/200/500/1000μl	
Storage	Store at -20°C. Avoid freeze/thaw cycles.	
Storage buffer	Supplied in 20 mM phosphate (pH 7.5), 150 mM NaCl, 100 μg/ml	
	BSA, 50% glycerol and less than 0.02% sodium azide	

General Information

Background	Mitofusin-1 (MFN1) is a mediator of mitochondrial fusion. This protein and mitofusin 2 are homologs of the Drosophila protein fuzzy onion (Fzo). Mitofusins are large predicted GTPases located in outer mitochondrial membrane. They are essential for outer membrane fusion by interacting with each other to facilitate mitochondrial targeting. The mitofusins are the first known protein mediator of mitochondrial fusion, and mediate developmentally regulated post-meiotic fusion of mitochondria.
Immunogen	Polyclonal antibody is produced by immunizing animals with a synthetic peptide of Mitofusin 1/Mfn1.
Purification	Polyclonal antibody was purified by immunogen affinity chromatography.

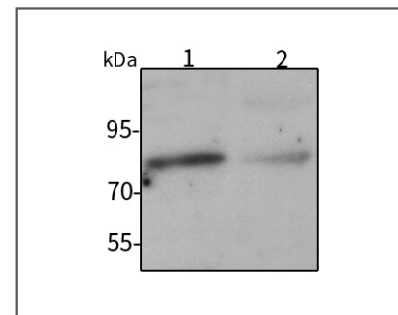
Anti-Mitofusin 1/Mfn1 Rabbit pAb



WL06394

For Research Use Only. Not For Use In Diagnostic Procedures

Product Images



Western blot-Anti-Mitofusin 1/Mfn1 pAb

Lane 1: Human Hela cell lysate

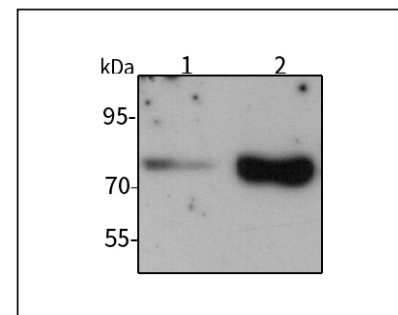
Lane 2: Human HEK-293 cell lysate

All lanes: Anti-Mitofusin 1/Mfn1 at 1:1000 dilution

Lysates/proteins at 20-50 μg per lane.

Predicted band size: 84 kDa

Observed band size: 75 kDa



Western blot-Anti-Mitofusin 1/Mfn1 pAb

Lane 1: Mouse kidney tissue lysate

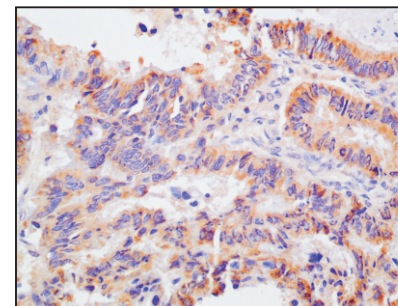
Lane 2: Mouse heart tissue lysate

All lanes: Anti-Mitofusin 1/Mfn1 at 1:1000 dilution

Lysates/proteins at 20-50 μg per lane.

Predicted band size: 84 kDa

Observed band size: 75 kDa



Immunohistochemistry-Anti-Mitofusin 1/Mfn1 pAb

Immunohistochemical analysis of paraffin-embedded human rectum cancer using anti-Mitofusin 1/Mfn1 Rabbit Antibody at 1:200 dilution. Perform heat mediated antigen retrieval with Tris-EDTA buffer pH 9.0

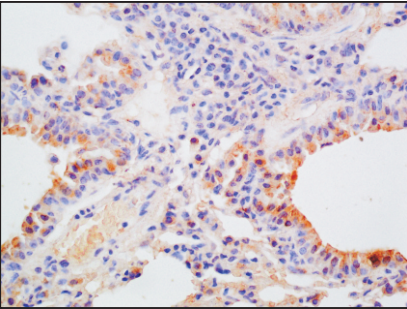
Anti-Mitofusin 1/Mfn1 Rabbit pAb



WL06394

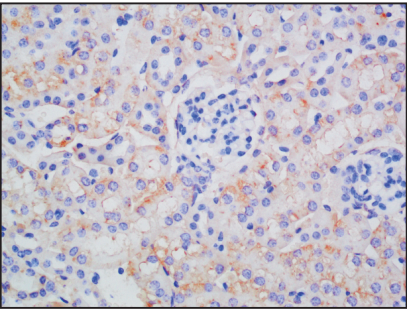
For Research Use Only. Not For Use In Diagnostic Procedures

Product Information



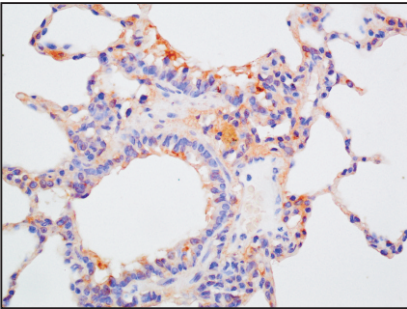
Immunohistochemistry-Anti-Mitofusin 1/Mfn1 pAb

Immunohistochemical analysis of paraffin-embedded mouse lung using anti-Mitofusin 1/Mfn1 Rabbit Antibody at 1:200 dilution.
Perform heat mediated antigen retrieval with Tris-EDTA buffer pH 9.0



Immunohistochemistry-Anti-Mitofusin 1/Mfn1 pAb

Immunohistochemical analysis of paraffin-embedded mouse kidney using anti-Mitofusin 1/Mfn1 Rabbit Antibody at 1:200 dilution.
Perform heat mediated antigen retrieval with Tris-EDTA buffer pH 9.0



Immunohistochemistry-Anti-Mitofusin 1/Mfn1 pAb

Immunohistochemical analysis of paraffin-embedded rat lung using anti-Mitofusin 1/Mfn1 Rabbit Antibody at 1:200 dilution.
Perform heat mediated antigen retrieval with Tris-EDTA buffer pH 9.0

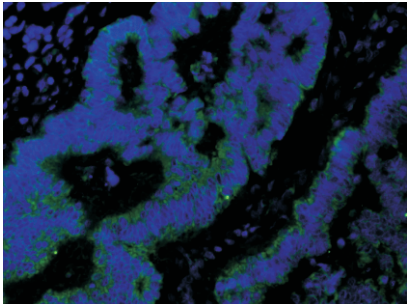
Anti-Mitofusin 1/Mfn1 Rabbit pAb



WL06394

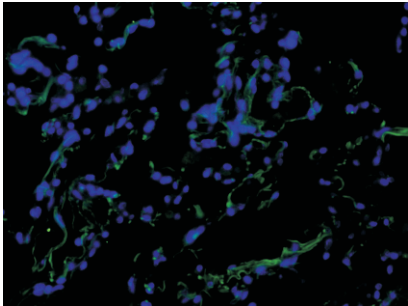
For Research Use Only. Not For Use In Diagnostic Procedures

Product Images



Immunofluorescence-Anti-Mitofusin 1/Mfn1 pAb

Immunofluorescence analysis of paraffin-embedded human rectum cancer uterus using anti-Mitofusin 1/Mfn1 Rabbit Antibody at 1:200 dilution.
Perform heat mediated antigen retrieval with Tris-EDTA buffer pH 9.0



Immunofluorescence-Anti-Mitofusin 1/Mfn1 pAb

Immunofluorescence analysis of paraffin-embedded human lung cancer using anti-Mitofusin 1/Mfn1 Rabbit Antibody at 1:200 dilution.
Perform heat mediated antigen retrieval with Tris-EDTA buffer pH 9.0