

Anti-eIF2α Rabbit pAb



WL01909

For Research Use Only. Not For Use In Diagnostic Procedures

Product Information

Product name	Anti-eIF2α Rabbit pAb	
Source	Rabbit	
Species reactivity	Human, Mouse, Rat	
Tested applications	WB	1:500-1:1000
	IHC	1:100
Cellular localization	Cytoplasm, extracellular space	
Pack size	50/100/200/500/1000μl	
Storage	Store at -20°C. Avoid freeze/thaw cycles.	
Storage buffer	Supplied in 20 mM phosphate (pH 7.5), 150 mM NaCl, 100 μg/ml	
	BSA, 50% glycerol and less than 0.02% sodium azide	

General Information

Background	EIF2α is a 65-kD protein that catalyzes the formation of puromycin-sensitive 80S preinitiation complexes. EIF2α, also known as EIF2S1 or EIF2, is a 315 amino acid subunit of the eukaryotic initiation complex that functions to bind tRNA to the 40S ribosomal subunit (in a GTP-dependent manner), thereby initiating translation. Phosphorylation of the eukaryotic initiation factor 2 (eIF2) α subunit is a well-documented mechanism to downregulate protein synthesis under a variety of stress conditions. When eIF2α is not phosphorylated, translation occurs at a normal rate. However, upon phosphorylation by one of several kinases, eIF2α is stabilized, thus preventing the GDP/GTP exchange reaction and slowing translation.
Immunogen	Polyclonal antibody is produced by immunizing animals with a synthetic peptide of eIF2α.
Purification	Polyclonal antibody was purified by immunogen affinity chromatography.

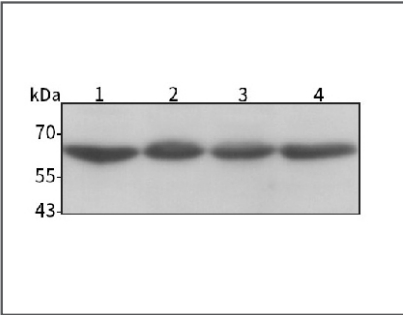
Anti-eIF2α Rabbit pAb



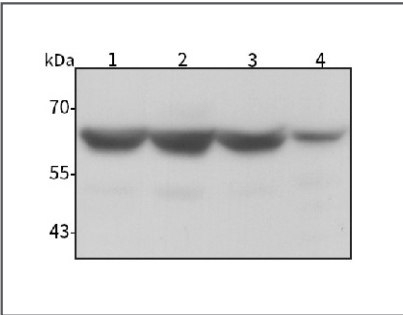
WL01909

For Research Use Only. Not For Use In Diagnostic Procedures

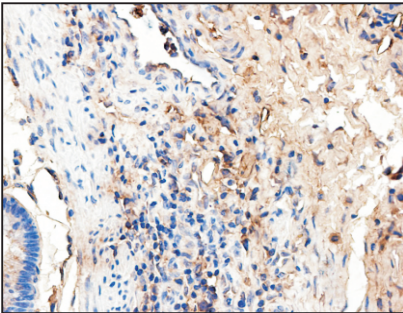
Product Images



Western blot-Anti-eIF2α pAb
Lane 1: Human CAL-27 cell lysate
Lane 2: Human Hela cell lysate
Lane 3: Human HL-60 cell lysate
Lane 4: Human THP-1 cell lysate
All lanes: Anti-eIF2α at 1:1000 dilution
Lysates/proteins at 20-50 μg per lane.
Predicted band size: 65 kDa
Observed band size: 65 kDa



Western blot-Anti-eIF2α pAb
Lane 1: Mouse lung tissue lysate
Lane 2: Mouse skin tissue lysate
Lane 3: Rat testis tissue lysate
Lane 4: Rat colon tissue lysate
All lanes: Anti-eIF2α at 1:1000 dilution
Lysates/proteins at 20-50 μg per lane.
Predicted band size: 65 kDa
Observed band size: 65 kDa



Immunohistochemistry-Anti-eIF2α pAb
Immunohistochemical analysis of paraffin-embedded human colon cancer using anti-eIF2α Rabbit Antibody at 1:100 dilution.
Perform heat mediated antigen retrieval with Tris-EDTA buffer pH 9.0

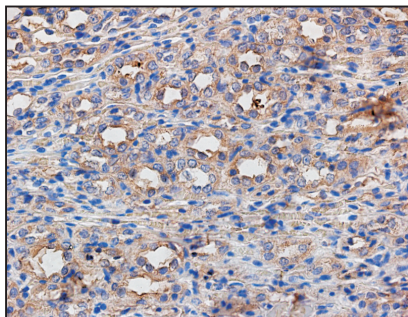
Anti-eIF2 α Rabbit pAb



WL01909

For Research Use Only. Not For Use In Diagnostic Procedures

Product Information



Immunohistochemistry-Anti-eIF2 α pAb

Immunohistochemical analysis of paraffin-embedded rat kidney using anti-eIF2 α Rabbit Antibody at 1:100 dilution.

Perform heat mediated antigen retrieval with Tris-EDTA buffer pH 9.0