

Anti- Prolactin Receptor/PRLR Rabbit pAb



WL06136

For Research Use Only. Not For Use In Diagnostic Procedures

Product Information

Product name	Anti- Prolactin Receptor/PRLR Rabbit pAb	
Source	Rabbit	
Species reactivity	Human, Mouse, Rat	
Tested applications	WB	1:1000-1:2000
	IHC, IF	1:100-1:500
Cellular localization	Secreted.	
Pack size	50/100/200/500/1000µl	
Storage	Store at -20°C. Avoid freeze/thaw cycles.	
Storage buffer	Supplied in 20 mM phosphate (pH 7.5), 150 mM NaCl, 100 µg/ml	
	BSA, 50% glycerol and less than 0.02% sodium azide	

General Information

Background

PRLR belongs to the type I subfamily of cytokines and is a receptor for the anterior pituitary hormone prolactin (PRL), leukemia inhibitory factor, erythropoietin, and other cytokines. Inhibiting sperm capacitance by suppressing SRC kinase activation and AKT stimulation can serve as a survival factor for sperm. Type 4 cannot transmit prolactin signaling. Type 6 cannot transmit prolactin signaling.

Immunogen

Polyclonal antibody is produced by immunizing animals with a synthetic peptide of Prolactin Receptor/PRLR.

Purification

Polyclonal antibody was purified by Protein A affinity chromatography.

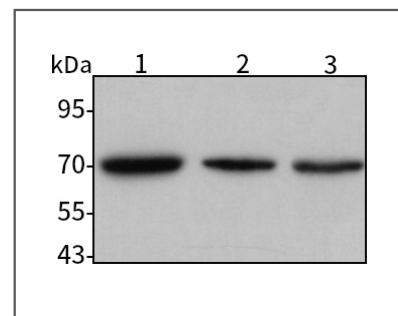
Anti- Prolactin Receptor/PRLR Rabbit pAb



WL06136

For Research Use Only. Not For Use In Diagnostic Procedures

Product Images

**Western blot-Anti- Prolactin Receptor/PRLR pAb**

Lane 1: Human Hela cell lysate

Lane 2: Human MDA-MB-231 cell lysate

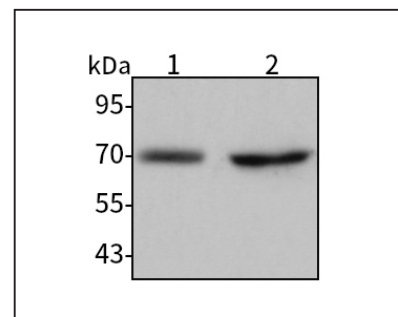
Lane 3: Human A549 cell lysate

All lanes: Anti- Prolactin Receptor/PRLR at 1:1000 dilution

Lysates/proteins at 20-50 µg per lane.

Predicted band size: 70 kDa

Observed band size: 70 kDa

**Western blot-Anti- Prolactin Receptor/PRLR pAb**

Lane 1: Mouse heart tissue lysate

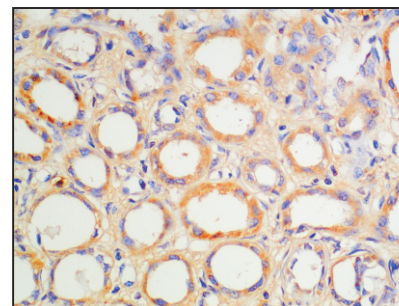
Lane 2: Rat liver tissue lysate

All lanes: Anti- Prolactin Receptor/PRLR at 1:1000 dilution

Lysates/proteins at 20-50 µg per lane.

Predicted band size: 70 kDa

Observed band size: 70 kDa

**Immunohistochemistry-Anti- Prolactin Receptor/PRLR pAb**

Immunohistochemical analysis of paraffin-embedded human kidney cancer using anti-Prolactin Receptor/PRLR Rabbit Antibody at 1:200 dilution.

Perform heat mediated antigen retrieval with Tris-EDTA buffer pH 9.0

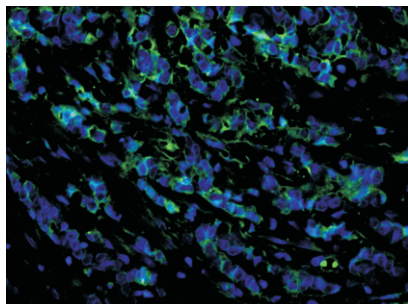
Anti- Prolactin Receptor/PRLR Rabbit pAb



WL06136

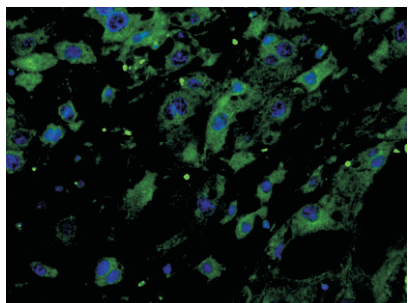
For Research Use Only. Not For Use In Diagnostic Procedures

Product Information



Immunofluorescence-Anti-Prolactin Receptor/PRLR pAb

Immunofluorescence analysis of paraffin-embedded human breast cancer using anti- Prolactin Receptor/PRLR Rabbit Antibody at 1:200 dilution.
Perform heat mediated antigen retrieval with Tris-EDTA buffer pH 9.0



Immunofluorescence-Anti-Prolactin Receptor/PRLR pAb

Immunofluorescence analysis of paraffin-embedded rat placenta using anti- Prolactin Receptor/PRLR Rabbit Antibody at 1:200 dilution.
Perform heat mediated antigen retrieval with Tris-EDTA buffer pH 9.0