

Anti-AFP Rabbit pAb



WL03819

For Research Use Only. Not For Use In Diagnostic Procedures

Product Information

Product name	Anti-AFP Rabbit pAb	
Source	Rabbit	
Species reactivity	Human, Mouse, Rat	
Tested applications	WB	1:500-1:1000
	IHC	1:200
	IF	1:200
Pack size	50/100/200/500/1000μl	
Storage	Store at -20°C. <b>Avoid freeze/thaw cycles.</b>	
Storage buffer	Supplied in 20 mM phosphate (pH 7.5), 150 mM NaCl, 100 μg/ml	
	BSA, 50% glycerol and less than 0.02% sodium azide	

General Information

Background	alpha-fetoprotein (AFP), a major plasma protein produced by the yolk sac and the liver during fetal life. Alpha-fetoprotein expression in adults is often associated with hepatoma or teratoma. The protein is thought to be the fetal counterpart of serum albumin, and the alpha-fetoprotein and albumin genes are present in tandem in the same transcriptional orientation on chromosome 4. While AFP expression in adult cells is low, it is aberrantly expressed in adult liver cancer cells. The tumor suppressor gene p53 and β-catenin are both involved in the regulation of AFP expression. In normal adult cells, p53 binds to the repressor region of the AFP gene, thereby blocking transcription. Mutations in both p53 and β-catenin are associated with aberrant expression of AFP. Research studies have shown that elevated serum AFP levels are predictive of hepatocellular carcinoma.
Immunogen	Polyclonal antibody is produced by immunizing animals with a synthetic peptide of AFP.
Purification	Polyclonal antibody was purified by immunogen affinity chromatography.

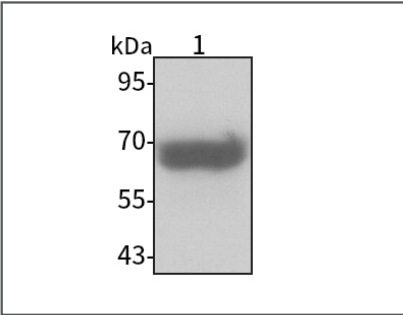
Anti-AFP Rabbit pAb



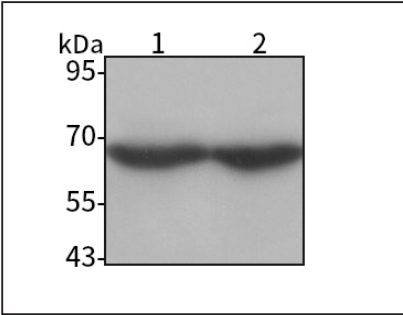
WL03819

For Research Use Only. Not For Use In Diagnostic Procedures

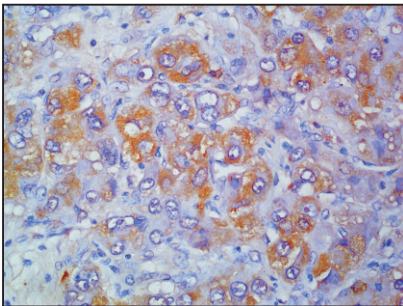
Product Images



**Western blot-Anti-AFP pAb**  
Lane 1: Human Huh-7 cell lysate  
All lanes: Anti-AFP at 1:1000 dilution  
Lysates/proteins at 20-50 μg per lane.  
Predicted band size: 68 kDa  
Observed band size: 68 kDa



**Western blot-Anti-AFP pAb**  
Lane 1: Mouse placenta tissue lysate  
Lane 3: Rat placenta tissue lysate  
All lanes: Anti-AFP at 1:1000 dilution  
Lysates/proteins at 20-50 μg per lane.  
Predicted band size: 68 kDa  
Observed band size: 68 kDa



**Immunohistochemistry-Anti-AFP pAb**  
Immunohistochemical analysis of paraffin-embedded human liver cancer using anti-AFP Rabbit Antibody at 1:200 dilution.  
Perform heat mediated antigen retrieval with Tris-EDTA buffer pH 9.0

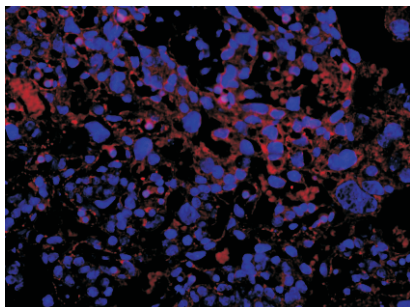
## Anti-AFP Rabbit pAb



WL03819

For Research Use Only. Not For Use In Diagnostic Procedures

## Product Information



### Immunofluorescence-Anti-AFP pAb

Immunofluorescence analysis of paraffin-embedded mouse placenta using anti-AFP Rabbit Antibody at 1:200 dilution.

Perform heat mediated antigen retrieval with Tris-EDTA buffer pH 9.0