

Anti- CLIC1 (acetyl K131) Rabbit pAb



WL05438

For Research Use Only. Not For Use In Diagnostic Procedures

Product Information

Product name Anti- CLIC1 (acetyl K131) Rabbit pAb**Source** Rabbit**Species reactivity** Human, Mouse, Rat

Tested applications

WB	1:1000-1:2000
IHC, IF	1:100-1:500

Cellular localization Cell membrane. Cytoplasm. Nucleus.**Pack size** 50/100/200/500/1000µl**Storage** Store at -20°C. **Avoid freeze/thaw cycles.**

Storage buffer

Supplied in 20 mM phosphate (pH 7.5), 150 mM NaCl, 100 µg/ml BSA, 50% glycerol and less than 0.02% sodium azide

General Information

Background

Chloride inner channel protein 1 (CLIC1) is a member of the chloride inner channel protein family. It plays a crucial role in various cellular processes, including regulating chloride ion transport, cellular vitality, and mitochondrial function. CLIC1 can regulate basic cellular processes, including stabilizing cell membrane potential, transepidermal transport, maintaining intracellular pH, and regulating cell volume.

Immunogen

Polyclonal antibody is produced by immunizing animals with a synthetic peptide of CLIC1 (acetyl K131) .

Purification

Polyclonal antibody was purified by Protein A affinity chromatography.

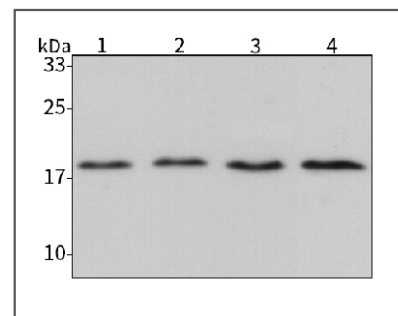
Anti- CLIC1 (acetyl K131) Rabbit pAb



WL05438

For Research Use Only. Not For Use In Diagnostic Procedures

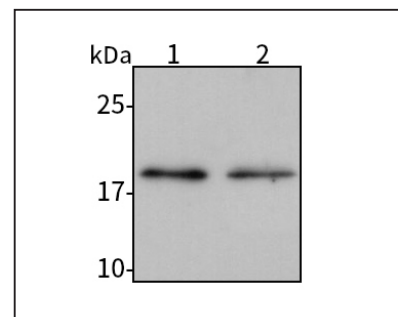
Product Images

**Western blot-Anti- CLIC1 (acetyl K131) pAb****Lane 1:** Human HCT116 cell lysate**Lane 2:** Human HEK293 cell lysate**Lane 3:** Human A549 cell lysate**Lane 4:** Human HUVEC cell lysate**All lanes:** Anti- CLIC1 (acetyl K131) at 1:1000 dilution

Lysates/proteins at 20-50 µg per lane.

Predicted band size: 27 kDa

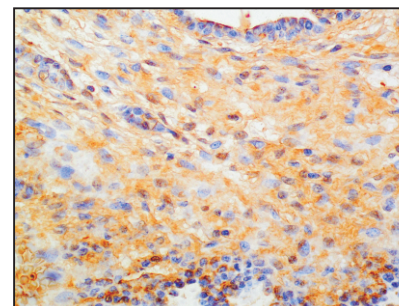
Observed band size: 19 kDa

**Western blot-Anti- CLIC1 (acetyl K131) pAb****Lane 1:** Mouse lung tissue lysate**Lane 2:** Rat colon tissue lysate**All lanes:** Anti- CLIC1 (acetyl K131) at 1:1000 dilution

Lysates/proteins at 20-50 µg per lane.

Predicted band size: 27 kDa

Observed band size: 19 kDa

**Immunohistochemistry-Anti- CLIC1 (acetyl K131) pAb**

Immunohistochemical analysis of paraffin-embedded rat placenta using anti- CLIC1 (acetyl K131) Rabbit Antibody at 1:200 dilution.

Perform heat mediated antigen retrieval with Tris-EDTA buffer pH 9.0

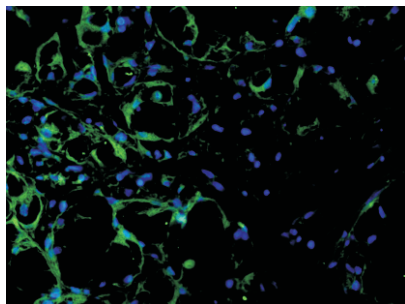
Anti- CLIC1 (acetyl K131) Rabbit pAb



WL05438

For Research Use Only. Not For Use In Diagnostic Procedures

Product Information



Immunofluorescence-Anti- CLIC1 (acetyl K131) pAb

Immunofluorescence analysis of paraffin-embedded human renal clear cell carcinoma using anti- CLIC1 (acetyl K131) Rabbit Antibody at 1:100 dilution.

Perform heat mediated antigen retrieval with Tris-EDTA buffer pH 9.0