

Anti-ADH1B Rabbit pAb



WL04351

For Research Use Only. Not For Use In Diagnostic Procedures

Product Information

Product name	Anti-ADH1B Rabbit pAb
Source	Rabbit
Species reactivity	Human
Tested applications	WB 1:1000-1:2000
Pack size	50/100/200/500/1000µl
Storage	Store at -20°C. Avoid freeze/thaw cycles.
Storage buffer	Supplied in 20 mM phosphate (pH 7.5), 150 mM NaCl, 100 µg/ml BSA, 50% glycerol and less than 0.02% sodium azide

General Information

Background

The ADH1B gene encodes the beta subunit of class I alcohol dehydrogenase (ADH), an enzyme that catalyzes the rate-limiting step for ethanol metabolism: the oxidation of alcohol to acetaldehyde. It is a member of the alcohol dehydrogenase family. Members of this enzyme family metabolize a wide variety of substrates, including ethanol, retinol, other aliphatic alcohols, hydroxysteroids, and lipid peroxidation products. This encoded protein, consisting of several homo- and heterodimers of alpha, beta, and gamma subunits, exhibits high activity for ethanol oxidation and plays a major role in ethanol catabolism.

Immunogen

Polyclonal antibody is produced by immunizing animals with a synthetic peptide of ADH1B.

Purification

Polyclonal antibody was purified by protein A affinity chromatography.

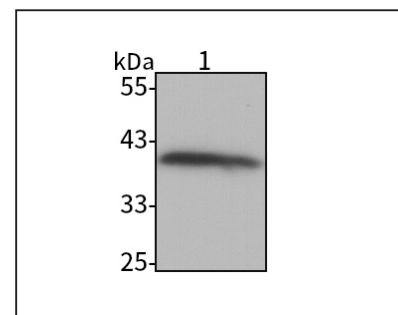
Anti-ADH1B Rabbit pAb



WL04351

For Research Use Only. Not For Use In Diagnostic Procedures

Product Images



Western blot-Anti-ADH1B pAb

Lane 1: Human HEP-G2 cell lysate
 All lanes: Anti-ADH1B at 1:1000 dilution
 Lysates/proteins at 20-50 µg per lane.
 Predicted band size: 40 kDa
 Observed band size: 40 kDa