

Anti- NEURL Rabbit pAb



WL04521

For Research Use Only. Not For Use In Diagnostic Procedures

Product Information

Product name	Anti- NEURL Rabbit pAb
Source	Rabbit
Species reactivity	Human, Mouse, Rat
Tested applications	WB 1:500-1:1000
Cellular localization	Cell membrane. Cell projection. Cytoplasm. Membrane. Synapse.
Pack size	50/100/200/500/1000µl
Storage	Store at -20°C. Avoid freeze/thaw cycles.
Storage buffer	Supplied in 20 mM phosphate (pH 7.5), 150 mM NaCl, 100 µg/ml BSA, 50% glycerol and less than 0.02% sodium azide

General Information

Background	NEURL (Neuralized like protein 1A) is also known as NEURL1, NEURL1A, RNF67. NEURL1 is a ring dependent E3 ubiquitin ligase that can activate the monoubiquitination of JAG1 (in vitro), thereby regulating the Notch pathway. NEURL1 plays a role in synaptic plasticity, learning, and memory dependent on the hippocampus. It can participate in the formation of dendritic spines and functional synaptic contacts by regulating the translation activity of cytoplasmic polyadenylation binding protein CPEB3. NEURL1 promotes ubiquitination of CPEB3, thereby inducing mRNA translation activation of CPEB3 dependent glutamate receptors GRIA1 and GRIA2.
Immunogen	Polyclonal antibody is produced by immunizing animals with a synthetic peptide of NEURL.
Purification	Polyclonal antibody was purified by immunogen affinity chromatography.

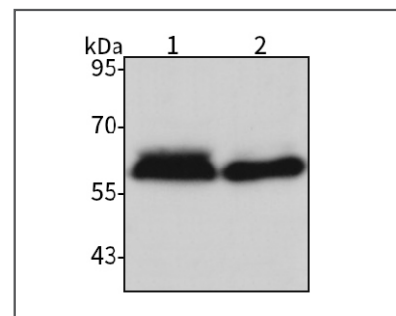
Anti- NEURL Rabbit pAb



WL04521

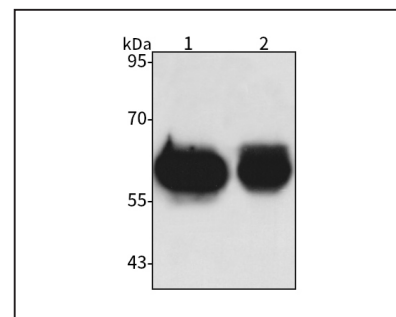
For Research Use Only. Not For Use In Diagnostic Procedures

Product Images



Western blot-Anti- NEURL pAb

Lane 1: Human SH-SY5Y cell lysate
Lane 2: Human BxPC-3 cell lysate
All lanes: Anti- NEURL at 1:1000 dilution
 Lysates/proteins at 20-50 µg per lane.
 Predicted band size: 59 kDa
 Observed band size: 62 kDa



Western blot-Anti- NEURL pAb

Lane 1: Mouse brain tissue lysate
Lane 2: Rat brain tissue lysate
All lanes: Anti- NEURL at 1:1000 dilution
 Lysates/proteins at 20-50 µg per lane.
 Predicted band size: 59 kDa
 Observed band size: 62 kDa