

## Anti-PCK2 Rabbit pAb



WL00211

For Research Use Only. Not For Use In Diagnostic Procedures

## Product Information

<b>Product name</b>	Anti-PCK2 Rabbit pAb	
<b>Source</b>	Rabbit	
<b>Species reactivity</b>	Human, Mouse, Rat	
<b>Tested applications</b>	WB	1:1000-1:2000
	IHC	1:500
<b>Cellular localization</b>	Mitochondrion	
<b>Pack size</b>	50/100/200/500/1000μl	
<b>Storage</b>	Store at -20°C. <b>Avoid freeze/thaw cycles.</b>	
<b>Storage buffer</b>	Supplied in 20 mM phosphate (pH 7.5), 150 mM NaCl, 100 μg/ml	
	BSA, 50% glycerol and less than 0.02% sodium azide	

## General Information

**Background** PCK2(phosphoenolpyruvate carboxykinase [GTP], mitochondrial) is also named as PEPCK2, PEPCK-M and belongs to the phosphoenolpyruvate carboxykinase [GTP] family. A cytosolic form of this protein is encoded by a different gene and is the key enzyme of gluconeogenesis in the liver. Alternatively spliced transcript variants have been described.

**Immunogen** Polyclonal antibody is produced by immunizing animals with a synthetic peptide of PCK2.

**Purification** Polyclonal antibody was purified by Protein A affinity chromatography.

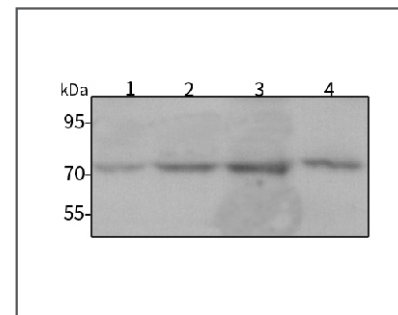
## Anti-PCK2 Rabbit pAb



WL00211

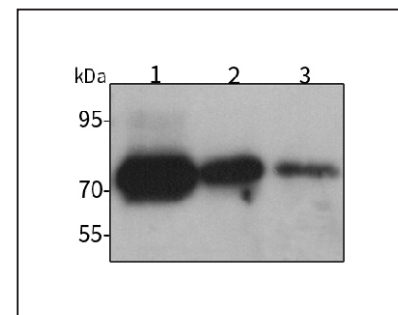
For Research Use Only. Not For Use In Diagnostic Procedures

## Product Images



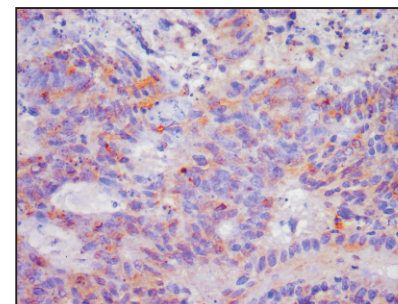
## Western blot-Anti-PCK2 pAb

Lane 1: Human Hela cell lysate  
 Lane 2: Human MCF-7 cell lysate  
 Lane 3: Human A549 cell lysate  
 Lane 3: Human HUVEC cell lysate  
 All lanes: Anti-PCK2 at 1:1000 dilution  
 Lysates/proteins at 20-50 μg per lane.  
 Predicted band size: 71 kDa  
 Observed band size: 71 kDa



## Western blot-Anti-PCK2 pAb

Lane 1: Mouse kidney tissue lysate  
 Lane 2: Mouse liver tissue lysate  
 Lane 3: Rat small intestine tissue lysate  
 All lanes: Anti-PCK2 at 1:1000 dilution  
 Lysates/proteins at 20-50 μg per lane.  
 Predicted band size: 71 kDa  
 Observed band size: 71 kDa



## Immunohistochemistry-Anti-PCK2 pAb

Immunohistochemical analysis of paraffin-embedded human colon cancer using anti-PCK2 Rabbit Antibody at 1:500 dilution.  
 Perform heat mediated antigen retrieval with Tris-EDTA buffer pH 9.0

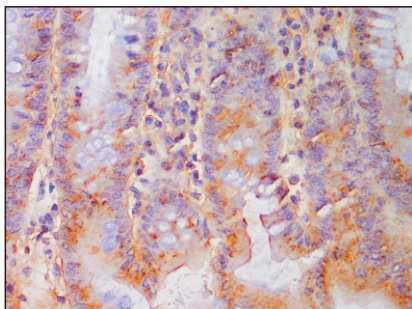
## Anti-PCK2 Rabbit pAb



WL00211

For Research Use Only. Not For Use In Diagnostic Procedures

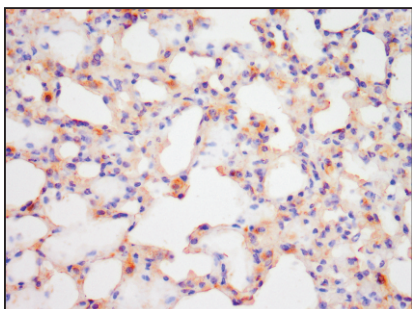
### Product Information



#### Immunohistochemistry-Anti-PCK2 pAb

Immunohistochemical analysis of paraffin-embedded mouse colon using anti-PCK2 Rabbit Antibody at 1:500 dilution.

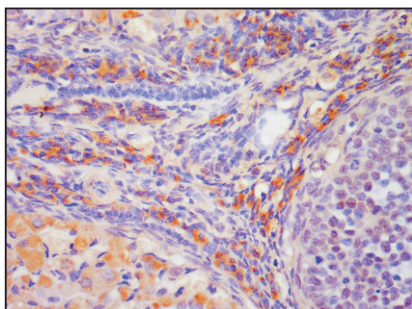
Perform heat mediated antigen retrieval with Tris-EDTA buffer pH 9.0



#### Immunohistochemistry-Anti-PCK2 pAb

Immunohistochemical analysis of paraffin-embedded mouse lung using anti-PCK2 Rabbit Antibody at 1:200 dilution.

Perform heat mediated antigen retrieval with Tris-EDTA buffer pH 9.0



#### Immunohistochemistry-Anti-PCK2 pAb

Immunohistochemical analysis of paraffin-embedded rat ovary using anti-PCK2 Rabbit Antibody at 1:200 dilution.

Perform heat mediated antigen retrieval with Tris-EDTA buffer pH 9.0