

Anti-Stim1 Rabbit pAb



WL02503

For Research Use Only. Not For Use In Diagnostic Procedures

Product Information

Product name	Anti-Stim1 Rabbit pAb	
Source	Rabbit	
Species reactivity	Human, Mouse, Rat	
Tested applications	Western blot	1:500-1:1000
Pack size	50/100/200/500/1000μl	
Storage	Store at -20°C. <b>Avoid freeze/thaw cycles.</b>	
Storage buffer	Supplied in 20 mM phosphate (pH 7.5), 150 mM NaCl, 100 μg/ml BSA, 50% glycerol and less than 0.02% sodium azide	

General Information

Background	Ca <sup>2+</sup> is a key second messenger in many intracellular signaling pathways. Stromal interaction molecule 1 (Stim1) is a ubiquitously expressed cell surface transmembrane glycoprotein that plays a role in medi-ating Ca <sup>2+</sup> influx following the depletion of intracellular Ca <sup>2+</sup> stores. STIM1 is a potential tumor suppressor; defects in STIM1 may cause rhabdomyosarcoma and rhabdoid tumors. Stim1 is implicated in tumor growth suppression and stromal-hematopoietic cell interactions.
Immunogen	Polyclonal antibody is produced by immunizing animals with a synthetic peptide of Stim1.
Purification	Polyclonal antibody was purified by immunogen affinity chromatography.

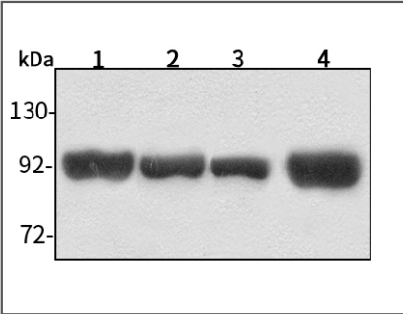
Anti-Stim1 Rabbit pAb



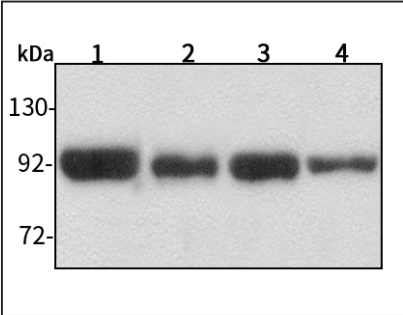
WL02503

For Research Use Only. Not For Use In Diagnostic Procedures

Product Images



**Western blot-Anti-Stim1 pAb**  
Lane 1: Human HepG2 cell lysate  
Lane 2: Human Hela cell lysate  
Lane 3: Human BGC-823 cell lysate  
Lane 4: Human MGC-803 cell lysate  
All lanes: Anti-Stim1 at 1:1000 dilution  
Lysates/proteins at 20-50 μg per lane.  
Predicted band size: 77 kDa  
Observed band size: 77-90 kDa



**Western blot-Anti-Stim1 pAb**  
Lane 1: Mouse kidney tissue lysate  
Lane 2: Mouse heart tissue lysate  
Lane 3: Rat brain tissue lysate  
Lane 4: Rat liver tissue lysate  
All lanes: Anti-Stim1 at 1:1000 dilution  
Lysates/proteins at 20-50 μg per lane.  
Predicted band size: 77 kDa  
Observed band size: 77-90 kDa