

Anti-IL22 Rabbit pAb



WL04441

For Research Use Only. Not For Use In Diagnostic Procedures

Product Information

Product name	Anti-IL22 Rabbit pAb	
Source	Rabbit	
Species reactivity	Human, Mouse, Rat	
Tested applications	WB	1:1000-1:2000
	IHC	1:100-1:400
	IF	1:100-1:400
Cellular localization	Secreted	
Pack size	50/100/200/500/1000μl	
Storage	Store at -20°C. Avoid freeze/thaw cycles.	
Storage buffer	Supplied in 20 mM phosphate (pH 7.5), 150 mM NaCl, 100 μg/ml	
	BSA, 50% glycerol and less than 0.02% sodium azide	

General Information

Background	IL-22, a member of the IL-10 family, is expressed by Th17 CD4+ T cells, activated T cells, Th1 cells and NK cells. The encoded protein functions in antimicrobial defense at mucosal surfaces and in tissue repair. This protein also has pro-inflammatory properties and plays a role in the pathogenesis of several intestinal diseases.
-------------------	--

Immunogen	Polyclonal antibody is produced by immunizing animals with a synthetic peptide of IL22.
------------------	---

Purification	Polyclonal antibody was purified by Protein A affinity chromatography.
---------------------	--

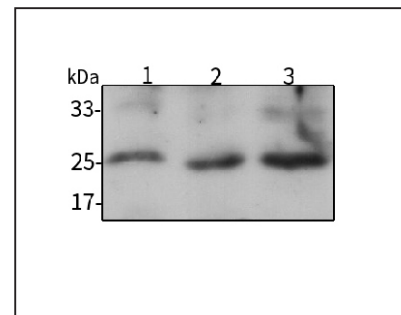
Anti-IL22 Rabbit pAb



WL04441

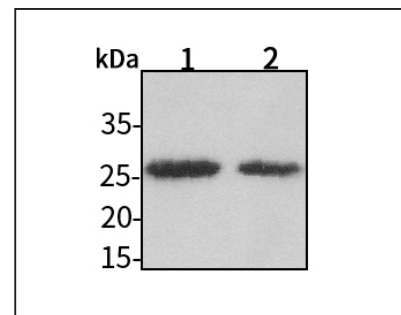
For Research Use Only. Not For Use In Diagnostic Procedures

Product Images



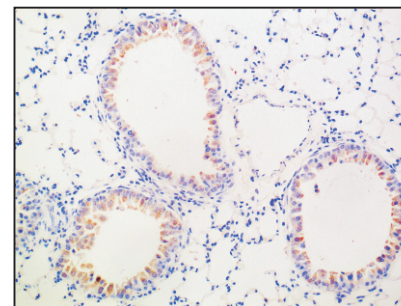
Western blot-Anti-IL22 pAb

Lane 1: Human MBA-MD-231 cell lysate
 Lane 2: Human A549 cell lysate
 Lane 3: Human HUVEC cell lysate
 All lanes: Anti-IL22 at 1:1000 dilution
 Lysates/proteins at 20-50 μg per lane.
 Predicted band size: 22 kDa



Western blot-Anti-IL22 pAb

Lane 1: Mouse kidney tissue lysate
 Lane 2: Rat stomach tissue lysate
 All lanes: Anti-IL22 at 1:1000 dilution
 Lysates/proteins at 20-50 μg per lane.
 Predicted band size: 22 kDa



Immunohistochemistry-Anti-IL22 pAb

Immunohistochemical analysis of paraffin-embedded mouse lung using anti-IL22 Rabbit Antibody at 1:200 dilution.
 Perform heat mediated antigen retrieval with Tris-EDTA buffer pH 9.0

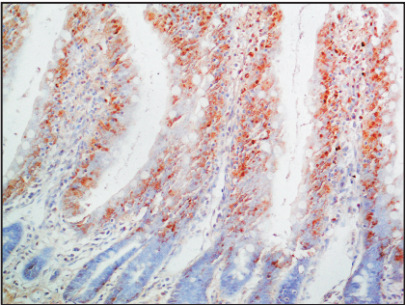
Anti-IL22 Rabbit pAb



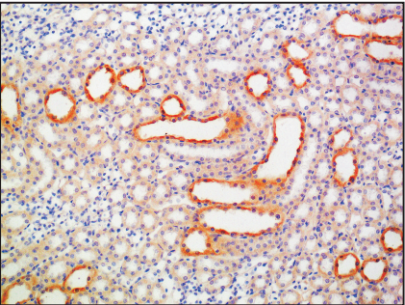
WL04441

For Research Use Only. Not For Use In Diagnostic Procedures

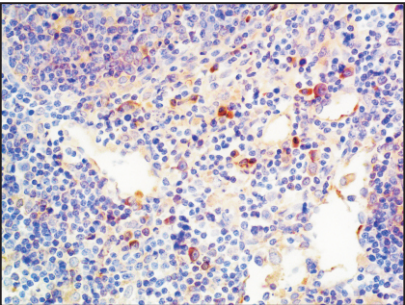
Product Information



Immunohistochemistry-Anti-IL22 pAb
Immunohistochemical analysis of paraffin-embedded rat colon using anti-IL22 Rabbit Antibody at 1:200 dilution.
Perform heat mediated antigen retrieval with Tris-EDTA buffer pH 9.0



Immunohistochemistry-Anti-IL22 pAb
Immunohistochemical analysis of paraffin-embedded rat kidney using anti-IL22 Rabbit Antibody at 1:200 dilution.
Perform heat mediated antigen retrieval with Tris-EDTA buffer pH 9.0



Immunohistochemistry-Anti-IL22 pAb
Immunohistochemical analysis of paraffin-embedded rabbit thymus using anti-IL22 Rabbit Antibody at 1:200 dilution.
Perform heat mediated antigen retrieval with Tris-EDTA buffer pH 9.0

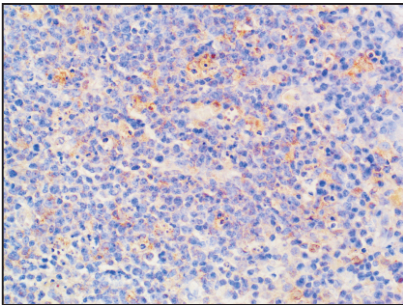
Anti-IL22 Rabbit pAb



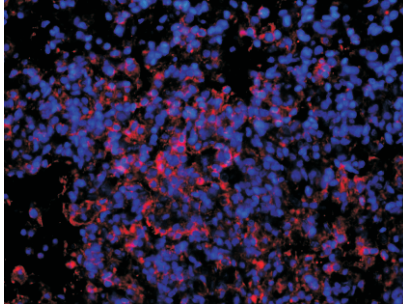
WL04441

For Research Use Only. Not For Use In Diagnostic Procedures

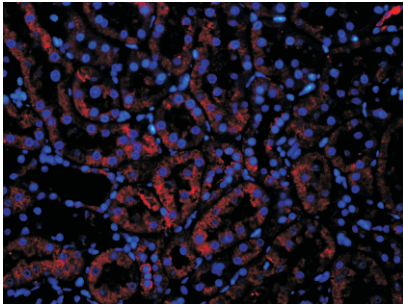
Product Images



Immunohistochemistry-Anti-IL22 pAb
Immunohistochemical analysis of paraffin-embedded rat thymus using anti-IL22 Rabbit Antibody at 1:200 dilution.
Perform heat mediated antigen retrieval with Tris-EDTA buffer pH 9.0



Immunofluorescence-Anti-IL22 pAb
Immunofluorescence analysis of paraffin-embedded rat lung using anti-IL22 Rabbit Antibody at 1:200 dilution.
Perform heat mediated antigen retrieval with Tris-EDTA buffer pH 9.0



Immunofluorescence-Anti-IL22 pAb
Immunofluorescence analysis of paraffin-embedded rat kidney using anti-IL22 Rabbit Antibody at 1:200 dilution.
Perform heat mediated antigen retrieval with Tris-EDTA buffer pH 9.0

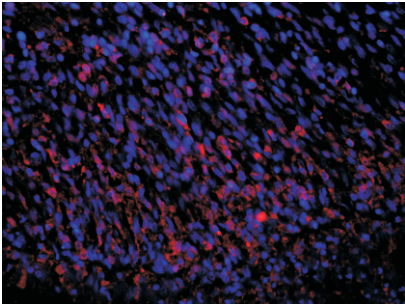
Anti-IL22 Rabbit pAb



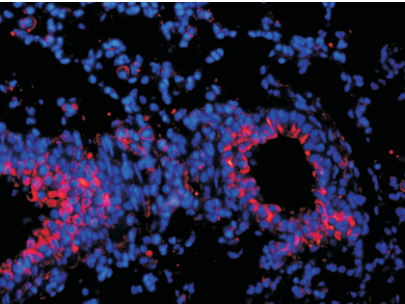
For Research Use Only. Not For Use In Diagnostic Procedures

WL04441

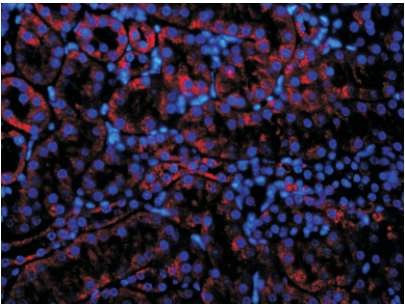
Product Information



Immunofluorescence-Anti-IL22 pAb
Immunofluorescence analysis of paraffin-embedded rat uterus using anti-IL22 Rabbit Antibody at 1:200 dilution.
Perform heat mediated antigen retrieval with Tris-EDTA buffer pH 9.0



Immunofluorescence-Anti-IL22 pAb
Immunofluorescence analysis of paraffin-embedded mouse lung using anti-IL22 Rabbit Antibody at 1:200 dilution.
Perform heat mediated antigen retrieval with Tris-EDTA buffer pH 9.0



Immunofluorescence-Anti-IL22 pAb
Immunofluorescence analysis of paraffin-embedded mouse kidney using anti-IL22 Rabbit Antibody at 1:200 dilution.
Perform heat mediated antigen retrieval with Tris-EDTA buffer pH 9.0