

Anti-Lck Rabbit pAb



WL02947

For Research Use Only. Not For Use In Diagnostic Procedures

Product Information

Product name	Anti-Lck Rabbit pAb	
Source	Rabbit	
Species reactivity	Human, Mouse, Rat	
Tested applications	WB	1:500-1:1000
	IHC	1:200
	IF	1:200

Cellular localization Cytoplasm. Cell membrane

Pack size 50/100/200/500/1000μl

Storage Store at -20°C. **Avoid freeze/thaw cycles.**

Storage buffer Supplied in 20 mM phosphate (pH 7.5), 150 mM NaCl, 100 μg/ml BSA, 50% glycerol and less than 0.02% sodium azide

General Information

Background Lck is a member of the Src family of protein tyrosine kinases (PTKs). Lck is a key signaling molecule in the selection and maturation of developing T-cells. It contains N-terminal sites for myristylation and palmitoylation, a PTK domain, and SH2 and SH3 domains which are involved in mediating protein-protein interactions with phosphotyrosine-containing and proline-rich motifs, respectively.

Immunogen Polyclonal antibody is produced by immunizing animals with a synthetic peptide of Lck.

Purification Polyclonal antibody was purified by immunogen affinity chromatography.

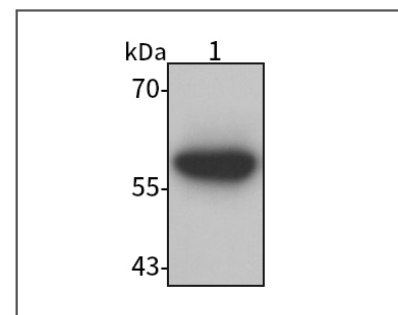
Anti-Lck Rabbit pAb



WL02947

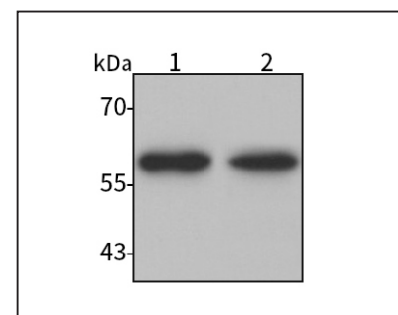
For Research Use Only. Not For Use In Diagnostic Procedures

Product Images



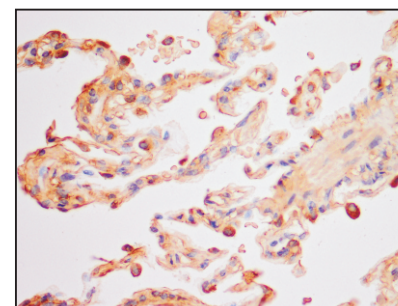
Western blot-Anti-Lck pAb

Lane 1: Human Jurkat cell lysate
All lanes: Anti-Lck at 1:1000 dilution
 Lysates/proteins at 20-50 μg per lane.
 Predicted band size: 58 kDa
 Observed band size: 58 kDa



Western blot-Anti-Lck pAb

Lane 1: Mouse spleen tissue lysate
 Lane 2: Rat spleen tissue lysate
All lanes: Anti-Lck at 1:1000 dilution
 Lysates/proteins at 20-50 μg per lane.
 Predicted band size: 58 kDa
 Observed band size: 58 kDa



Immunohistochemistry-Anti-Lck pAb

Immunohistochemical analysis of paraffin-embedded human lung cancer using anti-Lck Rabbit Antibody at 1:200 dilution.
 Perform heat mediated antigen retrieval with Tris-EDTA buffer pH 9.0

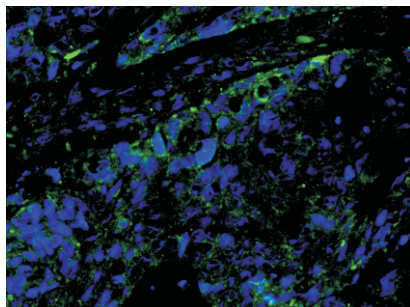
Anti-Lck Rabbit pAb



WL02947

For Research Use Only. Not For Use In Diagnostic Procedures

Product Information



Immunofluorescence-Anti-Lck pAb

Immunofluorescence analysis of paraffin-embedded human colon cancer using anti-Lck Rabbit Antibody at 1:200 dilution.

Perform heat mediated antigen retrieval with Tris-EDTA buffer pH 9.0