

Anti-Succinyl-CSR1 (Lys141) Rabbit pAb

Wanleibio



WL06188

For Research Use Only. Not For Use In Diagnostic Procedures

Product Information

Product name	Anti-Succinyl-CSR1 (Lys141) Rabbit pAb	
Source	Rabbit	
Species reactivity	Human, Mouse, Rat	
Tested applications	WB	1:1000-1:2000
	IHC	1:100-1:500
Cellular localization	Nucleus.	
Pack size	50/100/200/500/1000µl	
Storage	Store at -20°C. Avoid freeze/thaw cycles.	
Storage buffer	Supplied in 20 mM phosphate (pH 7.5), 150 mM NaCl, 100 µg/ml	
	BSA, 50% glycerol and less than 0.02% sodium azide	

General Information

Background

CSR1 is a member of the cysteine rich protein (CSR1) family. This gene family includes a set of LIM domain proteins that may be involved in important regulatory processes for development and cell differentiation. The LIM/double zinc finger motif of CSR1 occurs in proteins with critical functions in gene regulation, cell growth, and somatic differentiation. It can play a role in the development of neurons. Succinylation is a post-translational modification in which succinyl groups are added to lysine residues of protein molecules. The potential role of succinylation is currently being studied, but with the addition of succinyl groups, the charge of lysine changes from +1 to -1 (at physiological pH), and a relatively large structural portion is introduced, larger than acetylation or methylation, which is expected to lead to more significant changes in protein structure and function.

Immunogen

Polyclonal antibody is produced by immunizing animals with a synthetic peptide of Succinyl-CSR1 (Lys141) .

Purification

Polyclonal antibody was purified by Protein A affinity chromatography.

Anti-Succinyl-CSR1 (Lys141) Rabbit pAb

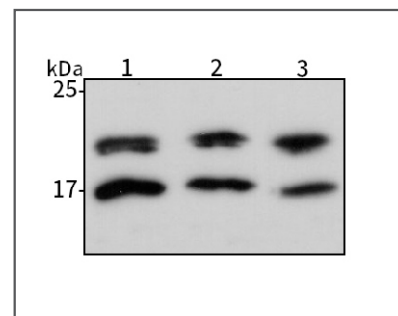
Wanleibio



WL06188

For Research Use Only. Not For Use In Diagnostic Procedures

Product Images



Western blot-Anti-Succinyl-CSR1 (Lys141) pAb

Lane 1: Human HeLa cell lysate

Lane 2: Human THP-1 cell lysate

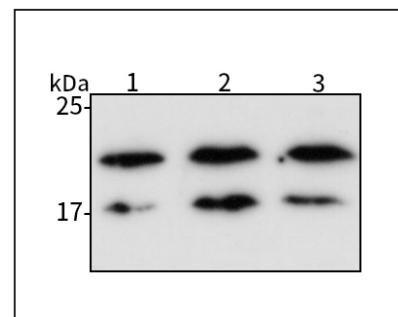
Lane 3: Human CAL-27 cell lysate

All lanes: Anti-Succinyl-CSR1 (Lys141) at 1:1000 dilution

Lysates/proteins at 20-50 µg per lane.

Predicted band size: 21 kDa

Observed band size: 21 kDa



Western blot-Anti-Succinyl-CSR1 (Lys141) pAb

Lane 1: Mouse kidney tissue lysate

Lane 2: Rat colon tissue lysate

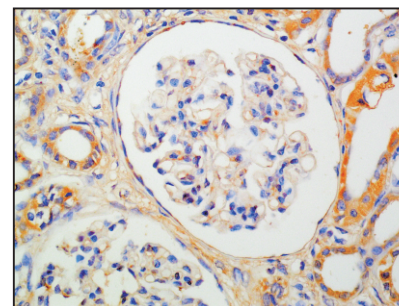
Lane 3: Rat stomach tissue lysate

All lanes: Anti-Succinyl-CSR1 (Lys141) at 1:1000 dilution

Lysates/proteins at 20-50 µg per lane.

Predicted band size: 21 kDa

Observed band size: 21 kDa



Immunohistochemistry-Anti-Succinyl-CSR1 (Lys141) pAb

Immunohistochemical analysis of paraffin-embedded human kidney cancer using anti-Succinyl-CSR1 (Lys141) Rabbit Antibody at 1:200 dilution.

Perform heat mediated antigen retrieval with Tris-EDTA buffer pH 9.0

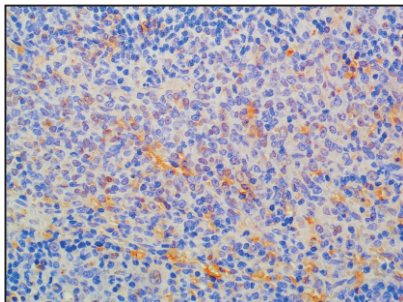
Anti-Succinyl-CSRP1 (Lys141) Rabbit pAb



WL06188

For Research Use Only. Not For Use In Diagnostic Procedures

Product Information



Immunohistochemistry-Anti-Succinyl-CSRP1 (Lys141) pAb

Immunohistochemical analysis of paraffin-embedded rat spleen using anti-Succinyl-CSRP1 (Lys141) Rabbit Antibody at 1:200 dilution.

Perform heat mediated antigen retrieval with Tris-EDTA buffer pH 9.0