

Anti-Mre11 Rabbit pAb



WL04618

For Research Use Only. Not For Use In Diagnostic Procedures

Product Information

Product name	Anti-Mre11 Rabbit pAb	
Source	Rabbit	
Species reactivity	Human	
Tested applications	WB	1:500-1:1000
Pack size	50/100/200/500/1000μl	
Storage	Store at -20°C. Avoid freeze/thaw cycles.	
Storage buffer	Supplied in 20 mM phosphate (pH 7.5), 150 mM NaCl, 100 μg/ml BSA, 50% glycerol and less than 0.02% sodium azide	

General Information

Background	MRE11 protein involved in homologous recombination, telomere length maintenance, and DNA double-strand break repair. The complex possesses single-strand endonuclease activity and double-strand-specific 3'-5' exonuclease activity, which are provided by MRE11A. RAD50 may be required to bind DNA ends and hold them in close proximity. This could facilitate searches for short or long regions of sequence homology in the recombining DNA templates, and may also stimulate the activity of DNA ligases and/or restrict the nuclease activity of MRE11A to prevent nucleolytic degradation past a given point.
Immunogen	Polyclonal antibody is produced by immunizing animals with a synthetic peptide of Mre11.
Purification	Polyclonal antibody was purified by immunogen affinity chromatography.

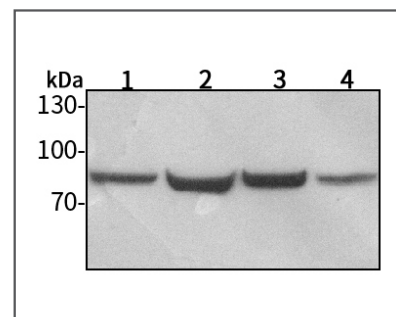
Anti-Mre11 Rabbit pAb



WL04618

For Research Use Only. Not For Use In Diagnostic Procedures

Product Images



Western blot-Anti-Mre11 pAb

Lane 1: Human Hela cell lysate
 Lane 2: Human MCF-7 cell lysate
 Lane 3: Human HEK-293 cell lysate
 Lane 4: Human A549 cell lysate
 All lanes: Anti-Mre11 at 1:1000 dilution
 Lysates/proteins at 20-50 μg per lane.
 Predicted band size: 81 kDa
 Observed band size: 81 kDa