

## Anti-SMC1A Rabbit pAb



WL02777

For Research Use Only. Not For Use In Diagnostic Procedures

## Product Information

<b>Product name</b>	Anti-SMC1A Rabbit pAb	
<b>Source</b>	Rabbit	
<b>Species reactivity</b>	Human, Mouse, Rat	
<b>Tested applications</b>	Western blot	1:500-1:1000
<b>Pack size</b>	50/100/200/500/1000μl	
<b>Storage</b>	Store at -20°C. <b>Avoid freeze/thaw cycles.</b>	
<b>Storage buffer</b>	Supplied in 20 mM phosphate (pH 7.5), 150 mM NaCl, 100 μg/ml BSA, 50% glycerol and less than 0.02% sodium azide	

## General Information

<b>Background</b>	The SMC (structural maintenance of chromosomes) family of proteins form heterodimeric complexes that modulate sister chromatid cohesion and chromosome condensation for mitosis. SMC1α (structural maintenance of chromosomes protein 1A), also known as SMC1, SMCB, CDLS2, SB1.8, SMC1L1 or DXS423E, is a component of the cohesion complex, which is required for the cohesion of sister chromatids after DNA replication. Most of the cohesin complexes dissociate from the chromosomes before mitosis, although those complexes at the kinetochore remain. Therefore, the encoded protein is thought to be an important part of functional kinetochores. In addition, this protein interacts with BRCA1 and is phosphorylated by ATM, indicating a potential role for this protein in DNA repair.
<b>Immunogen</b>	Polyclonal antibody is produced by immunizing animals with a synthetic peptide of SMC1A.
<b>Purification</b>	Polyclonal antibody was purified by immunogen affinity chromatography.

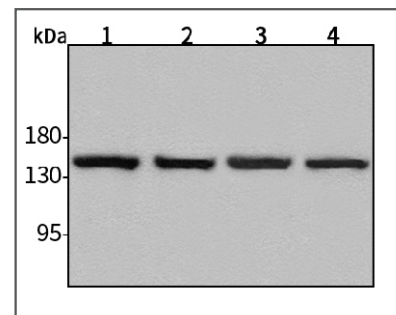
## Anti-SMC1A Rabbit pAb



WL02777

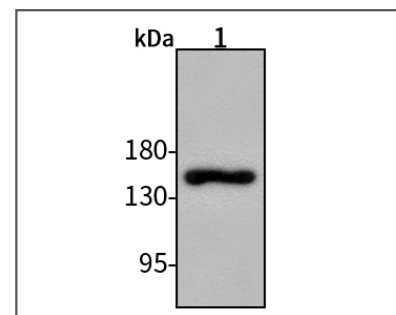
For Research Use Only. Not For Use In Diagnostic Procedures

## Product Images



Western blot-Anti-SMC1A pAb

Lane 1: Human HepG2 cell lysate  
 Lane 2: Human Hela cell lysate  
 Lane 3: Human BGC-823 cell lysate  
 Lane 4: Human MGC-803 cell lysate  
 All lanes: Anti-SMC1A at 1:1000 dilution  
 Lysates/proteins at 20-50 μg per lane.  
 Predicted band size: 143 kDa  
 Observed band size: 160 kDa



Western blot-Anti-SMC1A pAb

Lane 1: Mouse heart tissue lysate  
 All lanes: Anti-SMC1A at 1:1000 dilution  
 Lysates/proteins at 20-50 μg per lane.  
 Predicted band size: 143 kDa  
 Observed band size: 160 kDa