

Anti-MLC1 Rabbit pAb



WL00748

For Research Use Only. Not For Use In Diagnostic Procedures

Product Information

Product name	Anti-MLC1 Rabbit pAb	
Source	Rabbit	
Species reactivity	Human, Mouse, Rat	
Tested applications	WB	1:1000-1:2000
	IHC, IF	1:200-1:500
Pack size	50/100/200/500/1000μl	
Storage	Store at -20°C. Avoid freeze/thaw cycles.	
Storage buffer	Supplied in 20 mM phosphate (pH 7.5), 150 mM NaCl, 100 μg/ml	
	BSA, 50% glycerol and less than 0.02% sodium azide	

General Information

Background	The function of this gene product is unknown; however, homology to other proteins suggests that it may be an integral membrane transporter. MLC1 is a 377 amino acid multi-pass membrane protein that may serve as a non-selective neuronal cation channel in brain. Mutant MLC1 proteins that show impaired folding have been corrected in vitro with the addition of a Ca ²⁺ -ATPase inhibitor, curcumin. Single nucleotide polymorphisms within the MLC1 gene may be associated with periodic catatonia, but there seems to be conflicting evidence on whether or not the gene is implicated in general schizophrenia.
Immunogen	Polyclonal antibody is produced by immunizing animals with a synthetic peptide of MLC1.
Purification	Polyclonal antibody was purified by Protein A affinity chromatography.

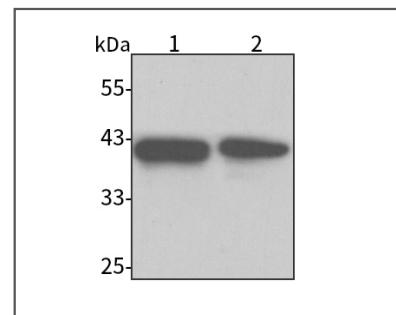
Anti-MLC1 Rabbit pAb



WL00748

For Research Use Only. Not For Use In Diagnostic Procedures

Product Images



Western blot-Anti-MLC1 pAb

Lane 1: Mouse brain tissue lysate

Lane 2: Rat brain tissue lysate

All lanes: Anti-MLC1 at 1:1000 dilution

Lysates/proteins at 20-50 μg per lane.

Predicted band size: 41 kDa

Observed band size: 41 kDa