

Anti-Lin28A Rabbit pAb



WL02791

For Research Use Only. Not For Use In Diagnostic Procedures

Product Information

Product name	Anti-Lin28A Rabbit pAb	
Source	Rabbit	
Species reactivity	Human, Mouse, Rat	
Tested applications	WB	1:500-1:1000
	IHC	1:200
Cellular localization	Cytoplasm. Nucleus	
Pack size	50/100/200/500/1000μl	
Storage	Store at -20°C. Avoid freeze/thaw cycles.	
Storage buffer	Supplied in 20 mM phosphate (pH 7.5), 150 mM NaCl, 100 μg/ml	
	BSA, 50% glycerol and less than 0.02% sodium azide	

General Information

Background	LIN28 is one of the four key human factors (OCT4, SOX2, NANOG and LIN28) used to reprogram human fibroblasts to an embryonic stem (ES) cell-like state known as the induced pluripotent stem (Ips) cell. The encoded protein functions through direct interaction with target mRNAs and by disrupting the maturation of certain miRNAs involved in embryonic development.
Immunogen	Polyclonal antibody is produced by immunizing animals with a synthetic peptide of Lin28A.
Purification	Polyclonal antibody was purified by immunogen affinity chromatography.

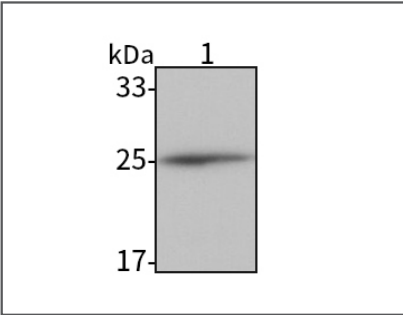
Anti-Lin28A Rabbit pAb



WL02791

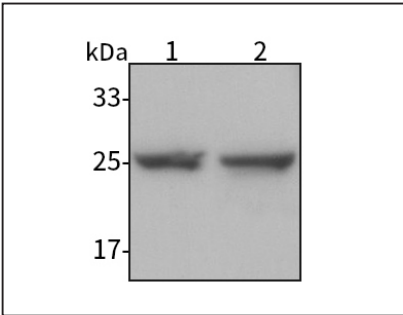
For Research Use Only. Not For Use In Diagnostic Procedures

Product Images



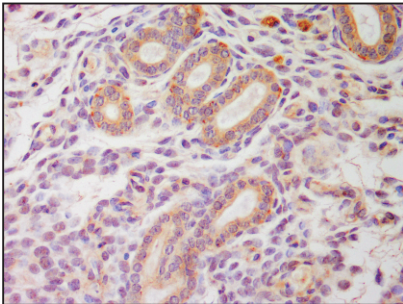
Western blot-Anti-Lin28A pAb

Lane 1: Human K-562 cell lysate
All lanes: Anti-Lin28A at 1:1000 dilution
Lysates/proteins at 20-50 μg per lane.
Predicted band size: 23 kDa
Observed band size: 25 kDa



Western blot-Anti-Lin28A pAb

Lane 1: Mouse testis tissue lysate
Lane 2: Rat testis tissue lysate
All lanes: Anti-Lin28A at 1:1000 dilution
Lysates/proteins at 20-50 μg per lane.
Predicted band size: 23 kDa
Observed band size: 25 kDa



Immunohistochemistry-Anti-Lin28A pAb

Immunohistochemical analysis of paraffin-embedded mouse uterus using anti-Lin28A Rabbit Antibody at 1:200 dilution.
Perform heat mediated antigen retrieval with Tris-EDTA buffer pH 9.0