

Anti-p35 Rabbit pAb



WL05056

For Research Use Only. Not For Use In Diagnostic Procedures

Product Information

Product name	Anti-p35 Rabbit pAb
Source	Rabbit
Species reactivity	Human, Mouse, Rat
Tested applications	Western blot 1:500-1:1000 <small><i>*Suggested working dilutions are given as a guide only. It is recommended that the user titrates the product for use in their own experiment using appropriate negative and positive controls.</i></small>
Molecular Wt.	34 kDa 50/100/200/500/1000μl
Pack size	Store at -20°C. Avoid freeze/thaw cycles.
Storage	Supplied in 20 mM phosphate (pH 7.5), 150 mM NaCl, 100 μg/ml
Storage buffer	BSA, 50% glycerol and less than 0.02% sodium azide

General Information

Background	Cyclin dependent kinase-5 (Cdk5), is an atypical but essential member of the Cdk family of proline-directed serine/threonine kinases. CDK5R1 encodes p35, a specific activator of the serine/threonine kinase CDK5, which plays a central role in neuronal migration and differentiation during central nervous system development. The p35 form of this protein is proteolytically cleaved by calpain, generating a p25 form..
-------------------	---

Immunogen	Polyclonal antibody is produced by immunizing animals with a synthetic peptide of p35.
------------------	--

Purification	Polyclonal antibody was purified by immunogen affinity chromatography.
---------------------	--

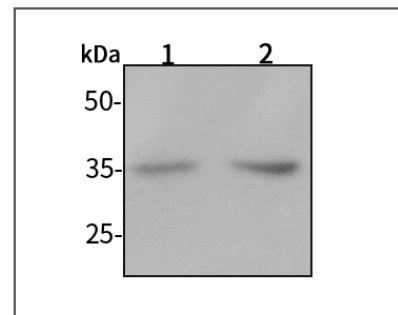
Anti-p35 Rabbit pAb



WL05056

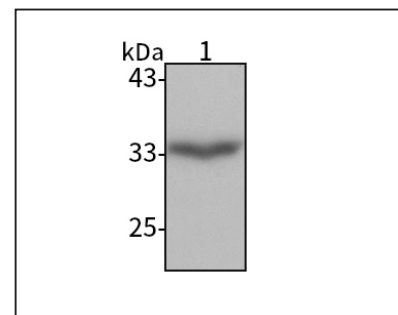
For Research Use Only. Not For Use In Diagnostic Procedures

Product Images



Western blot-Anti-p35 pAb

Lane 1: Human HUVEC cell lysate 20μg
 Lane 2: Human SW480 cell lysate 20μg
 Separation gel: 11% polyacrylamide
 Electrophoresis: 100V, 4°C, 3h
 Transmembrane: 100V, 4°C, 1h
 Blocking: 5% w/v nonfat dry milk, 1 × TBST, at RT with gentle shaking
 Primary antibody: 1:1000 in blocking buffer, 4°C, overnight
 Secondary antibody (WLA023a) : 1:5000-1:10000, 45min
 Detection: ECL, 30s-2min



Western blot-Anti-p35 pAb

Lane 1: Mouse brain tissue lysate 10μg
 Separation gel: 11% polyacrylamide
 Electrophoresis: 100V, 4°C, 3h
 Transmembrane: 100V, 4°C, 1h
 Blocking: 5% w/v nonfat dry milk, 1 × TBST, at RT with gentle shaking
 Primary antibody: 1:1000 in blocking buffer, 4°C, overnight
 Secondary antibody (WLA023a) : 1:5000-1:10000, 45min
 Detection: ECL, 30s-2min