

Anti-Glut1 Rabbit pAb



WL01163

For Research Use Only. Not For Use In Diagnostic Procedures

Product Information

Product name	Anti-Glut1 Rabbit pAb	
Source	Rabbit	
Species reactivity	Human, Mouse, Rat	
Tested applications	WB	1:500-1:1000
	IHC	1:200
	IF	1:200
Cellular localization	Secreted and Cell membrane	
Pack size	50/100/200/500/1000μl	
Storage	Store at -20°C. Avoid freeze/thaw cycles.	
Storage buffer	Supplied in 20 mM phosphate (pH 7.5), 150 mM NaCl, 100 μg/ml	
	BSA, 50% glycerol and less than 0.02% sodium azide	

General Information

Background	Glut1 is a major glucose transporter in the mammalian blood-brain barrier. Glut1 is found primarily in the cell membrane and on the cell surface, where it can also function as a receptor for human T-cell leukemia virus (HTLV) I and II. Mutations in this gene have been found in a family with paroxysmal exertion-induced dyskinesia.
Immunogen	Polyclonal antibody is produced by immunizing animals with a synthetic peptide of Glut1.
Purification	Polyclonal antibody was purified by immunogen affinity chromatography.

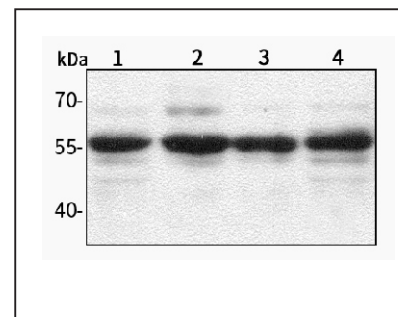
Anti-Glut1 Rabbit pAb



WL01163

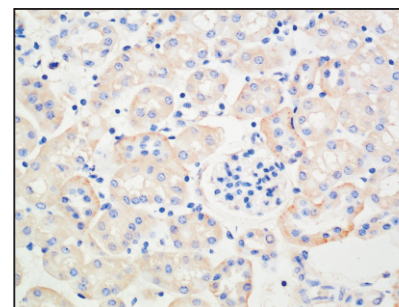
For Research Use Only. Not For Use In Diagnostic Procedures

Product Images



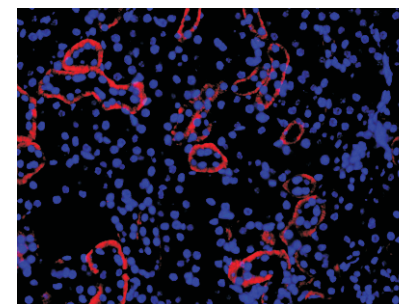
Western blot-Anti-Glut1 pAb

Lane 1: Human MGC-803 cell lysate
 Lane 2: Human SGC-7901 cell lysate
 Lane 3: Human Caco2 cell lysate
 Lane 4: Human MCF-7 cell lysate
 All lanes: Anti-Glut1 at 1:1000 dilution
 Lysates/proteins at 20-50 μg per lane.
 Predicted band size: 55 kDa
 Observed band size: 40-60kDa



Immunohistochemistry-Anti-Glut1 pAb

Immunohistochemical analysis of paraffin-embedded mouse kidney using anti-Glut1 Rabbit Antibody at 1:200 dilution.
 Perform heat mediated antigen retrieval with Tris-EDTA buffer pH 9.0



Immunofluorescence-Anti-Glut1 pAb

Immunofluorescence analysis of paraffin-embedded mouse kidney using anti-Glut1 Rabbit Antibody at 1:200 dilution.
 Perform heat mediated antigen retrieval with Tris-EDTA buffer pH 9.0