

## Anti-SMAD2/3 Rabbit pAb



WL01520

For Research Use Only. Not For Use In Diagnostic Procedures

## Product Information

<b>Product name</b>	Anti-SMAD2/3 Rabbit pAb	
<b>Source</b>	Rabbit	
<b>Species reactivity</b>	Human, Mouse, Rat, Rabbit	
<b>Tested applications</b>	WB	1:1000-1:2000
	IHC	1:100-1:400
	IF	1:300
<b>Cellular localization</b>	Cytoplasm. Nucleus	
<b>Pack size</b>	50/100/200/500/1000μl	
<b>Storage</b>	Store at -20°C. <b>Avoid freeze/thaw cycles.</b>	
<b>Storage buffer</b>	Supplied in 20 mM phosphate (pH 7.5), 150 mM NaCl, 100 μg/ml	
	BSA, 50% glycerol and less than 0.02% sodium azide	

## General Information

<b>Background</b>	Members of the Smad family of signal transduction molecules are components of a critical intracellular pathway that transmit TGF-β signals from the cell surface into the nucleus. Smad1 and Smad5 are effectors of BMP-2 and BMP-4 function, while Smad2 and Smad3 are involved in TGF-β and Activin-mediated growth modulation. Smad4 has been shown to mediate all of the above activities through interaction with various Smad family members. The phosphorylated receptor-regulated Smad associates from the receptor and forms a heteromeric complex with the co-Smad (Smad4), allowing translocation of the complex to the nucleus. Once in the nucleus, Smads can target a variety of DNA binding proteins to regulate transcriptional responses.
<b>Immunogen</b>	Polyclonal antibody is produced by immunizing animals with a synthetic peptide of SMAD2/3.
<b>Purification</b>	Polyclonal antibody was purified by Protein A affinity chromatography.

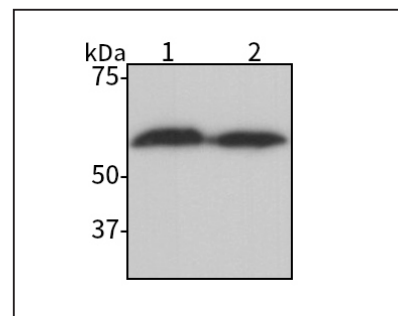
## Anti-SMAD2/3 Rabbit pAb



WL01520

For Research Use Only. Not For Use In Diagnostic Procedures

## Product Images



## Western blot-Anti-SMAD2/3 pAb

Lane 1: Human HEP-G2 cell lysate

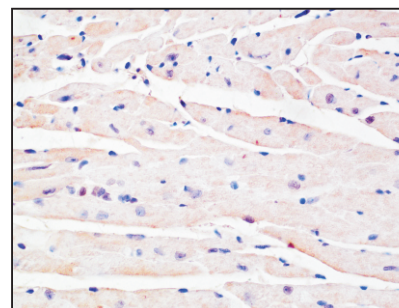
Lane 2: Human Hela cell lysate

All lanes: Anti-SMAD2/3 at 1:1000 dilution

Lysates/proteins at 20-50 μg per lane.

Predicted band size: 52 kDa

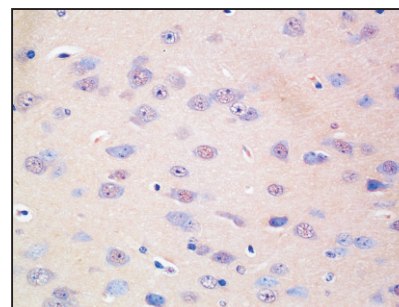
Observed band size: 52-60 kDa



## Immunohistochemistry-Anti-SMAD2/3 pAb

Immunohistochemical analysis of paraffin-embedded mouse heart using anti-SMAD2/3 Rabbit Antibody at 1:200 dilution.

Perform heat mediated antigen retrieval with Tris-EDTA buffer pH 9.0



## Immunohistochemistry-Anti-SMAD2/3 pAb

Immunohistochemical analysis of paraffin-embedded mouse brain using anti-SMAD2/3 Rabbit Antibody at 1:200 dilution.

Perform heat mediated antigen retrieval with Tris-EDTA buffer pH 9.0

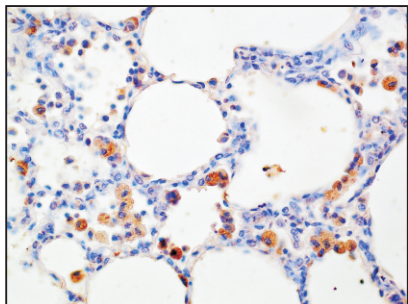
## Anti-SMAD2/3 Rabbit pAb



For Research Use Only. Not For Use In Diagnostic Procedures

WL01520

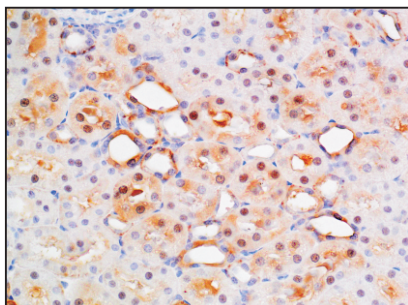
### Product Information



#### Immunohistochemistry-Anti-SMAD2/3 pAb

Immunohistochemical analysis of paraffin-embedded rat lung using anti-SMAD2/3 Rabbit Antibody at 1:200 dilution.

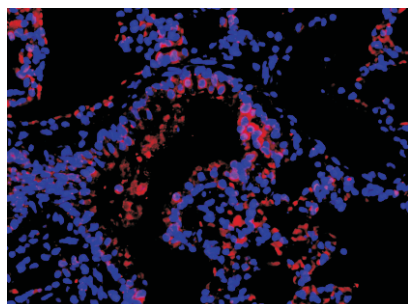
Perform heat mediated antigen retrieval with Tris-EDTA buffer pH 9.0



#### Immunohistochemistry-Anti-SMAD2/3 pAb

Immunohistochemical analysis of paraffin-embedded rat kidney using anti-SMAD2/3 Rabbit Antibody at 1:200 dilution.

Perform heat mediated antigen retrieval with Tris-EDTA buffer pH 9.0



#### Immunofluorescence-Anti-SMAD2/3 pAb

Immunofluorescence analysis of paraffin-embedded rat lung using anti-SMAD2/3 Rabbit Antibody at 1:300 dilution.

Perform heat mediated antigen retrieval with Tris-EDTA buffer pH 9.0