

Anti-ANP Rabbit pAb



WL02666

For Research Use Only. Not For Use In Diagnostic Procedures

Product Information

Product name	Anti-ANP Rabbit pAb		
Source	Rabbit		
Species reactivity	Human, Mouse, Rat		
Tested applications	WB	1:1000-1:2000	
	IF	1:200-1:500	
Cellular localization	Secreted		
Pack size	50/100/200/500/1000µl		
Storage	Store at -20°C. Avoid freeze/thaw cycles.		
Storage buffer	Supplied in 20 mM phosphate (pH 7.5), 150 mM NaCl, 100 µg/ml		
	BSA, 50% glycerol and less than 0.02% sodium azide		

General Information

Background	Atrial natriuretic peptide (ANP), is a powerful vasodilator, and a protein (polypeptide) hormone secreted by heart muscle cells. ANP is closely related to BNP (brain natriuretic peptide) and CNP (C-type natriuretic peptide), which all share a similar amino acid ring structure. ANP acts to reduce the water, sodium and adipose loads on the circulatory system, thereby reducing blood pressure. ANP has exactly the opposite function of the aldosterone secreted by the zona glomerulosa in regard to its effect on sodium in the kidney – that is, aldosterone stimulates sodium retention and ANP generates sodium loss.
Immunogen	Polyclonal antibody is produced by immunizing animals with a synthetic peptide of ANP.
Purification	Polyclonal antibody was purified by Protein A affinity chromatography.

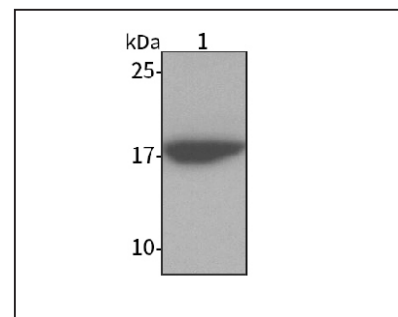
Anti-ANP Rabbit pAb



WL02666

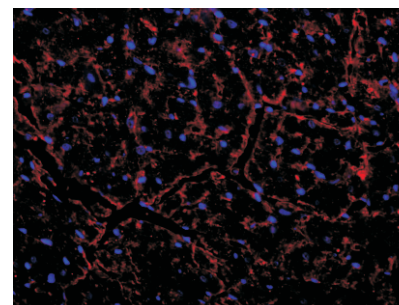
For Research Use Only. Not For Use In Diagnostic Procedures

Product Images



Western blot-Anti-ANP pAb

Lane 1: Human AC16 cell lysate
 All lanes: Anti-ANP at 1:1000 dilution
 Lysates/proteins at 20-50 µg per lane.
 Predicted band size: 17 kDa
 Observed band size: 17 kDa



Immunofluorescence-Anti-ANP pAb

Immunofluorescence analysis of paraffin-embedded rat heart using anti-ANP Rabbit Antibody at 1:500 dilution.
 Perform heat mediated antigen retrieval with Tris-EDTA buffer pH 9.0