

## Anti-Angiogenin Rabbit pAb



WL04508

For Research Use Only. Not For Use In Diagnostic Procedures

## Product Information

Product name	Anti-Angiogenin Rabbit pAb		
Source	Rabbit		
Species reactivity	Human, Mouse, Rat		
Tested applications	WB	1:500-1:1000	
	IHC, IF	1:200	
Cellular localization	Secreted.		
Pack size	50/100/200/500/1000μl		
Storage	Store at -20°C. Avoid freeze/thaw cycles.		
Storage buffer	Supplied in 20 mM phosphate (pH 7.5), 150 mM NaCl, 100 μg/ml		
	BSA, 50% glycerol and less than 0.02% sodium azide		

## General Information

<b>Background</b>	Angiogenesis is an exceedingly potent mediator of new blood vessel formation. Angiogenin, originally identified as a tumor angiogenic factor, was related with the growth and metastasis of numerous tumors. Increased angiogenin serum levels have been associated with the incidence and severity of several human tumors, including HCC.
<b>Immunogen</b>	Polyclonal antibody is produced by immunizing animals with a synthetic peptide of Angiogenin.
<b>Purification</b>	Polyclonal antibody was purified by immunogen affinity

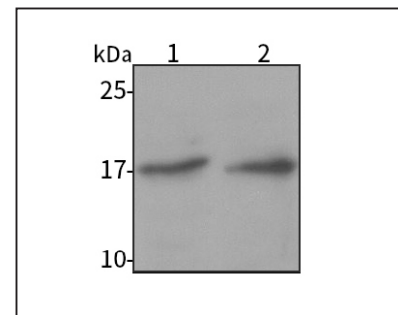
## Anti-Angiogenin Rabbit pAb



WL04508

For Research Use Only. Not For Use In Diagnostic Procedures

## Product Images



## Western blot-Anti-Angiogenin pAb

Lane 1: Mouse liver tissue lysate

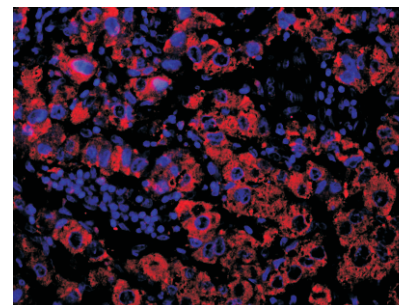
Lane 2: Rat liver tissue lysate

All lanes: Anti-Angiogenin at 1:1000 dilution

Lysates/proteins at 20-50 μg per lane

Predicted band size: 17 kDa

Observed band size: 17 kDa



## Immunofluorescence-Anti-Angiogenin pAb

Immunofluorescence analysis of paraffin-embedded human liver cancer using anti-Angiogenin Rabbit Antibody at 1:200 dilution.

Perform heat mediated antigen retrieval with Tris-EDTA buffer pH 9.0