

Anti- P-PLK1 (S326) Rabbit pAb



WLA0314

For Research Use Only. Not For Use In Diagnostic Procedures

Product Information

Product name	Anti- P-PLK1 (S326) Rabbit pAb	
Source	Rabbit	
Species reactivity	Human, Mouse, Rat	
Tested applications	WB	1:1000-1:2000
	IHC, IF	1:100-1:500
Cellular localization	Nucleus. Chromosome. Cytoplasm, cytoskeleton.	
Pack size	50/100/200/500/1000µl	
Storage	Store at -20°C. Avoid freeze/thaw cycles.	
Storage buffer	Supplied in 20 mM phosphate (pH 7.5), 150 mM NaCl, 100 µg/ml	
	BSA, 50% glycerol and less than 0.02% sodium azide	

General Information

Background

The SER/THR protein kinase encoded by this gene belongs to the Cdc5/Paolo subfamily. It is highly expressed during mitosis and has been found to be elevated in many different types of cancer. The depletion of this protein in cancer cells greatly inhibits cell proliferation and induces apoptosis. Therefore, it is a target for cancer treatment.

Immunogen

Polyclonal antibody is produced by immunizing animals with a synthetic peptide of P-PLK1 (S326) .

Purification

Polyclonal antibody was purified by Protein A affinity chromatography.

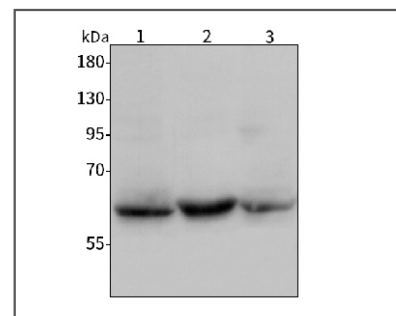
Anti- P-PLK1 (S326) Rabbit pAb



WLA0314

For Research Use Only. Not For Use In Diagnostic Procedures

Product Images



Western blot-Anti- P-PLK1 (S326) pAb

Lane 1: Human HeLa cell lysate

Lane 2: Human HEK293 cell lysate

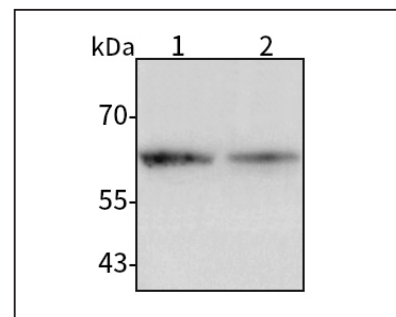
Lane 3: Human HCT116 cell lysate

All lanes: Anti- P-PLK1 (S326) at 1:1000 dilution

Lysates/proteins at 20-50 µg per lane.

Predicted band size: 67 kDa

Observed band size: 57 kDa



Western blot-Anti- P-PLK1 (S326) pAb

Lane 1: Mouse colon tissue lysate

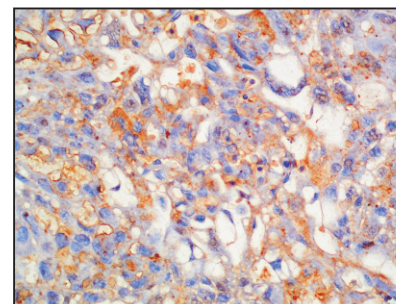
Lane 2: Rat colon tissue lysate

All lanes: Anti- P-PLK1 (S326) at 1:1000 dilution

Lysates/proteins at 20-50 µg per lane.

Predicted band size: 67 kDa

Observed band size: 57 kDa



Immunohistochemistry-Anti- P-PLK1 (S326) pAb

Immunohistochemical analysis of paraffin-embedded mouse placenta using anti- P-PLK1 (S326) Rabbit Antibody at 1:200 dilution.

Perform heat mediated antigen retrieval with Tris-EDTA buffer pH 9.0

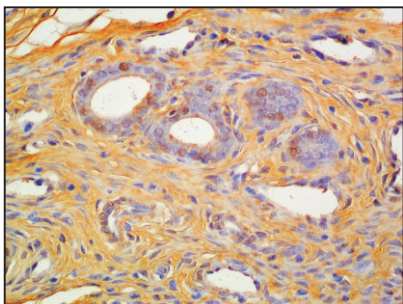
Anti- P-PLK1 (S326) Rabbit pAb



WLA0314

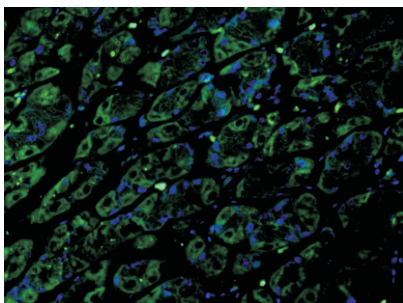
For Research Use Only. Not For Use In Diagnostic Procedures

Product Information



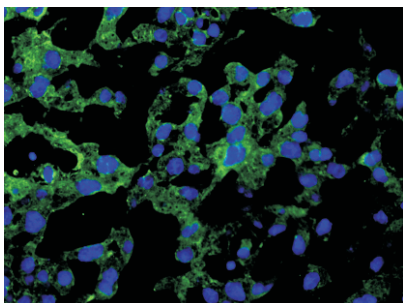
Immunohistochemistry-Anti- P-PLK1 (S326) pAb

Immunohistochemical analysis of paraffin-embedded rat uterus using anti- P-PLK1 (S326) Rabbit Antibody at 1:200 dilution.
Perform heat mediated antigen retrieval with Tris-EDTA buffer pH 9.0



Immunofluorescence-Anti- P-PLK1 (S326) pAb

Immunofluorescence analysis of paraffin-embedded human liver cancer using anti- P-PLK1 (S326) Rabbit Antibody at 1:200 dilution.
Perform heat mediated antigen retrieval with Tris-EDTA buffer pH 9.0



Immunofluorescence-Anti- P-PLK1 (S326) pAb

Immunofluorescence analysis of paraffin-embedded mouse placenta using anti- P-PLK1 (S326) Rabbit Antibody at 1:200 dilution.
Perform heat mediated antigen retrieval with Tris-EDTA buffer pH 9.0