

Anti-Ly6g Rabbit pAb



WLH4318

For Research Use Only. Not For Use In Diagnostic Procedures

Product Information

Product name	Anti-Ly6g Rabbit pAb	
Source	Rabbit	
Species reactivity	Human, Mouse, Rat, Rabbit	
Tested applications	WB	1:500-1:1000
	IHC, IF	1:200-1:400
Cellular localization	Cell membrane	
Pack size	50/100/200/500/1000μl	
Storage	Store at -20°C. Avoid freeze/thaw cycles.	
Storage buffer	Supplied in 20 mM phosphate (pH 7.5), 150 mM NaCl, 100 μg/ml	
	BSA, 50% glycerol and less than 0.02% sodium azide	

General Information

Background	Ly-6G, also known as Gr-1, glycosylphosphatidylinositol-anchored protein. Ly-6 family members share amino acid homology throughout a distinctive cysteine rich protein domain that incorporates O-linked carbohydrates. The expression of Ly-6G increases on neutrophils as they differentiate from immature cells in the bone marrow to mature cells in the blood and spleen.
Immunogen	Polyclonal antibody is produced by immunizing animals with a synthetic peptide of Ly6g.
Purification	Polyclonal antibody was purified by immunogen affinity chromatography.

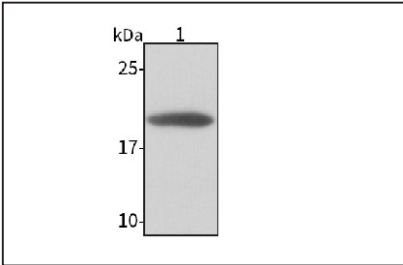
Anti-Ly6g Rabbit pAb



WLH4318

For Research Use Only. Not For Use In Diagnostic Procedures

Product Images



Western blot-Anti-Ly6g pAb

Lane 1: Mouse spleen tissue lysate
All lanes: Anti-Ly6g at 1:1000 dilution
Lysates/proteins at 20-50 μg per lane.
Predicted band size: 16 kDa
Observed band size: 20 kDa