

Anti-PDGF-A Rabbit pAb



WL02880

For Research Use Only. Not For Use In Diagnostic Procedures

Product Information

Product name	Anti-PDGF-A Rabbit pAb		
Source	Rabbit		
Species reactivity	Human, Mouse, Rat		
Tested applications	Western blot	1:1000-1:2000	
	Immunohistochemistry	1:100-1:400	
	Immunofluorescence	1:100-1:400	
Molecular Wt.	24 kDa		
Cellular localization	Secreted.		
Pack size	50/100/200/500/1000μl		
Storage	Store at -20°C. Avoid freeze/thaw cycles.		
Storage buffer	Supplied in 20 mM phosphate (pH 7.5), 150 mM NaCl, 100 μg/ml		
	BSA, 50% glycerol and less than 0.02% sodium azide		

General Information

Background	PDGF is a mitogen for mesenchyme- and glia-derived cells. It consists of two disulfide-bonded polypeptide chains, A and B, and occurs as three isoforms; PDGF AA, AB and BB. PDGF-B is proteolytically processed to generate platelet-derived growth factor subunit B, which can homodimerize, or alternatively, heterodimerize with the related platelet-derived growth factor subunit A. Evidence suggests that PDGF may function as a neurotrophic factor. Receptors for PDGF-A are expressed in oligodendrocyte progenitor cells whereas receptors for PDGF-B are expressed on neurons.
Immunogen	Polyclonal antibody is produced by immunizing animals with a synthetic peptide of PDGF-A.
Purification	Polyclonal antibody was purified by Protein A affinity chromatography.

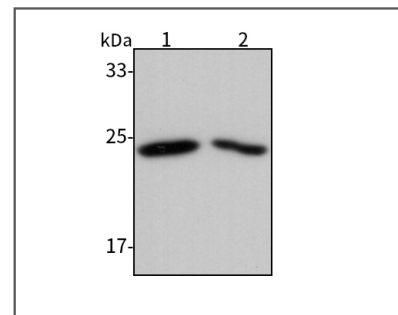
Anti-PDGF-A Rabbit pAb



WL02880

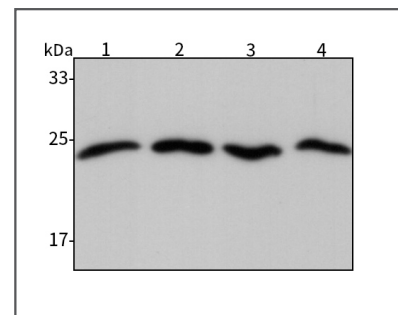
For Research Use Only. Not For Use In Diagnostic Procedures

Product Images



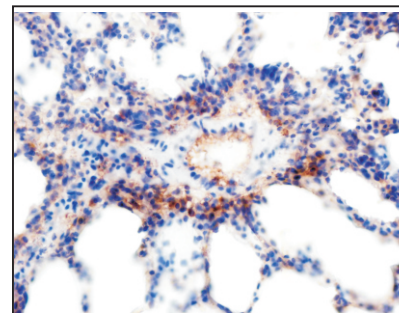
Western blot-Anti-PDGF-A pAb

Lane 1: Human placenta tissue lysate 30μg
Lane 2: Human kidney tissue lysate 30μg
Separation gel: 10% polyacrylamide
Electrophoresis: 100V, 4°C, 3h
Transmembrane: 100V, 4°C, 1h
Blocking: 5% w/v nonfat dry milk, 1×TBST, at RT with gentle shaking
Primary antibody: 1:1000 in blocking buffer, 4°C, overnight
Secondary antibody (WLA023a) : 1:5000-1:10000, 45min
Detection: ECL, 30s-2min



Western blot-Anti-PDGF-A pAb

Lane 1: Mouse lung tissue lysate 30μg
Lane 2: Mouse ovary tissue lysate 30μg
Lane 3: Rat lung tissue lysate 30μg
Lane 4: Rat ovary tissue lysate 30μg
Separation gel: 10% polyacrylamide
Electrophoresis: 100V, 4°C, 3h
Transmembrane: 100V, 4°C, 1h
Blocking: 5% w/v nonfat dry milk, 1×TBST, at RT with gentle shaking
Primary antibody: 1:1000 in blocking buffer, 4°C, overnight
Secondary antibody (WLA023a) : 1:5000-1:10000, 45min



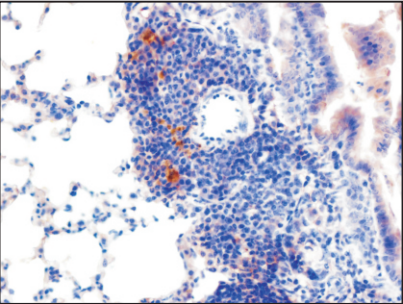
Immunohistochemistry-Anti-PDGF-A pAb

Sample: Rat lung tissue
Antigen retrieval: pH 9.0 Tris-EDTA buffer
Primary antibody: 1:150, 4°C, overnight
Secondary antibody-Biotin: 1:150, 37°C, 1h
Streptavidin-HRP: 1:200, 37°C, 30min
Color Developing: DAB

Anti-PDGF-A Rabbit pAb

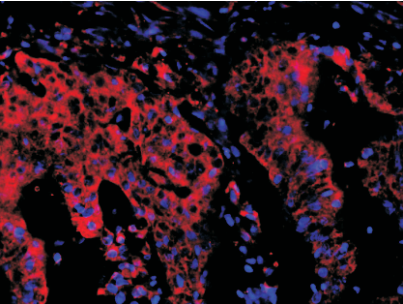
For Research Use Only. Not For Use In Diagnostic Procedures

Product Images



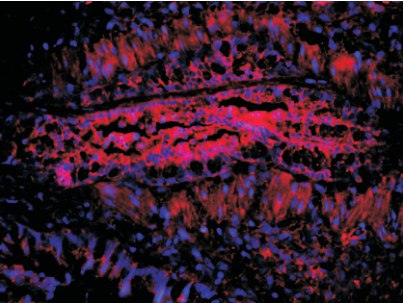
Immunohistochemistry-Anti-PDGF-A pAb

Sample: Mouse lung tissue
Antigen retrieval: pH 9.0 Tris-EDTA buffer
Primary antibody: 1:150, 4°C, overnight
Secondary antibody-Biotin: 1:150, 37°C, 1h
Streptavidin-HRP: 1:200, 37°C, 30min
Color Developing: DAB



Immunofluorescence-Anti-PDGF-A pAb

Sample: Human rectal cancer tissue
Primary antibody: 1:200, 4°C, overnight
Secondary antibody-CY3: 1:200, at room temperature, 1h



Immunofluorescence-Anti-PDGF-A pAb

Sample: Rat lung tissue
Primary antibody: 1:200, 4°C, overnight
Secondary antibody-CY3: 1:200, at room temperature, 1h

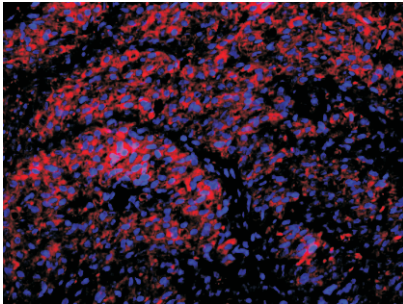


WL02880

Anti-PDGF-A Rabbit pAb

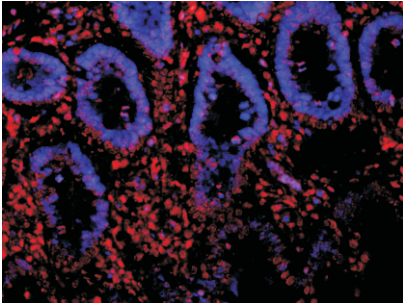
For Research Use Only. Not For Use In Diagnostic Procedures

Product Images



Immunofluorescence-Anti-PDGF-A pAb

Sample: Rat ovary tissue
Primary antibody: 1:200, 4°C, overnight
Secondary antibody-CY3: 1:200, at room temperature, 1h



Immunofluorescence-Anti-PDGF-A pAb

Sample: Rat small intestine tissue
Primary antibody: 1:200, 4°C, overnight
Secondary antibody-CY3: 1:200, at room temperature, 1h



WL02880